

Appendix 11-2:
Landscaping Plan

EXCELSIOR SOLAR ENERGY CENTER, LLC

- LANDSCAPE PLANS -

AUGUST, 2020

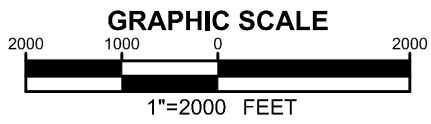
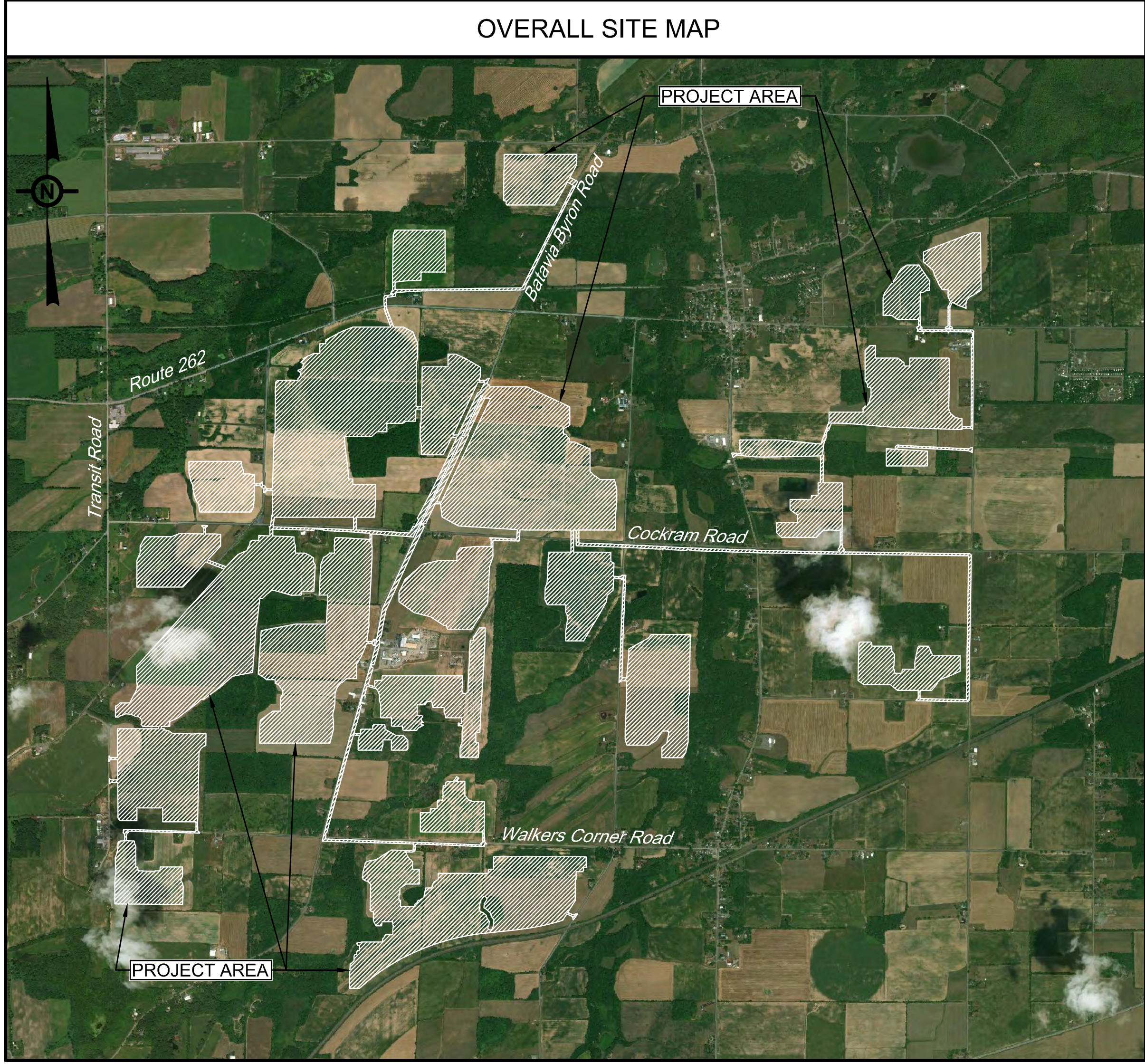
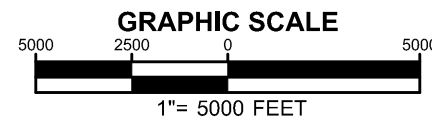
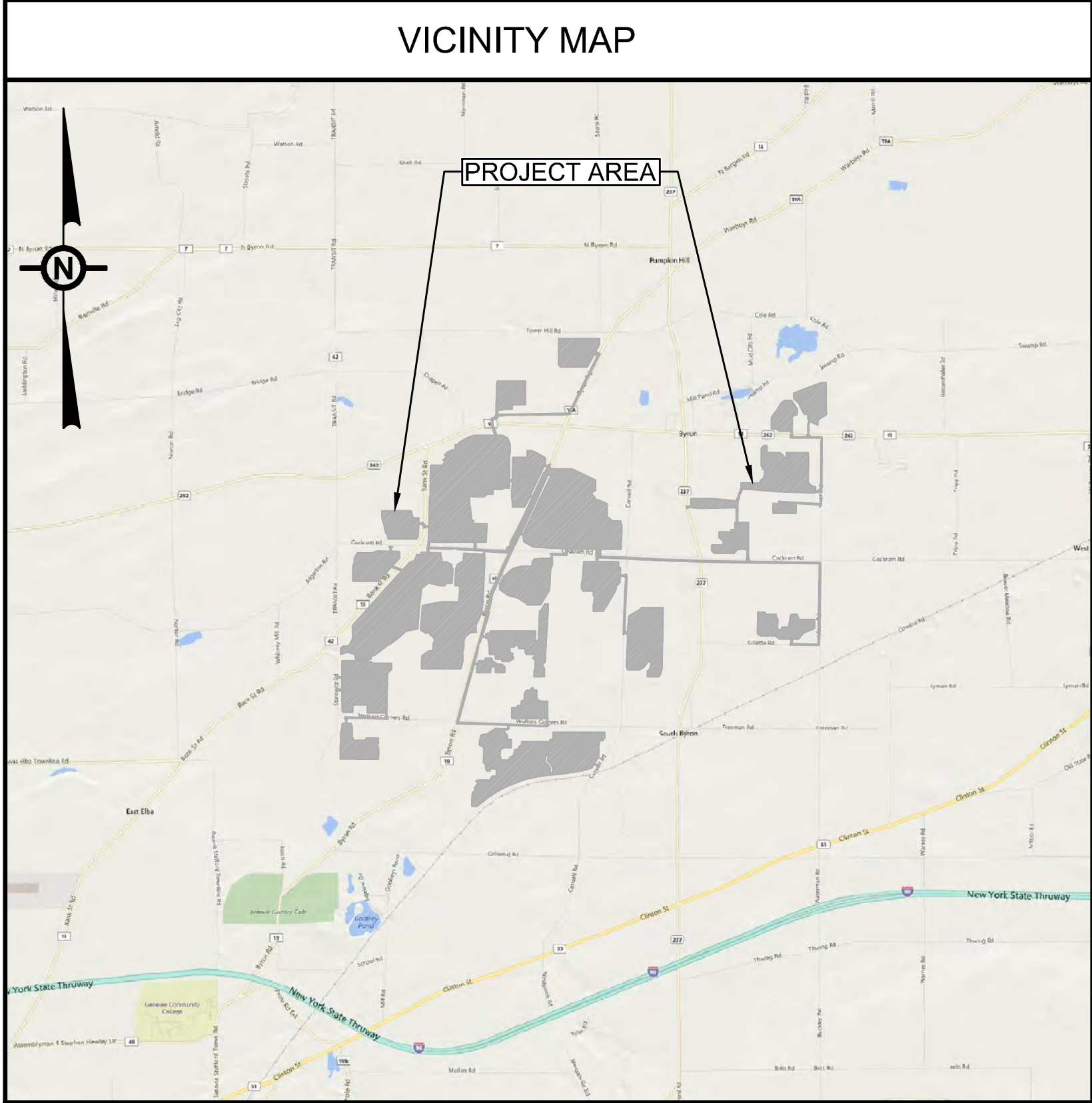


TABLE OF DRAWINGS	
DWG NO.	TITLE
L0.00	COVER SHEET
L1.00	OVERALL LANDSCAPE PLAN
L1.01	ENLARGED LANDSCAPE PLAN
L1.02	ENLARGED LANDSCAPE PLAN
L1.03	ENLARGED LANDSCAPE PLAN
L1.04	ENLARGED LANDSCAPE PLAN
L1.05	ENLARGED LANDSCAPE PLAN
L1.06	ENLARGED LANDSCAPE PLAN
L1.07	ENLARGED LANDSCAPE PLAN
L1.08	ENLARGED LANDSCAPE PLAN
L1.09	ENLARGED LANDSCAPE PLAN
L1.10	ENLARGED LANDSCAPE PLAN
L1.11	ENLARGED LANDSCAPE PLAN
L1.12	ENLARGED LANDSCAPE PLAN
L1.13	ENLARGED LANDSCAPE PLAN
L1.14	ENLARGED LANDSCAPE PLAN
L2.01	LANDSCAPE NOTES & DETAILS
L2.02	LANDSCAPE MITIGATION TYPE 1 TEMPLATE & SCHEDULES
L2.03	LANDSCAPE MITIGATION TYPE 1 TEMPLATE & SCHEDULES
L2.04	LANDSCAPE MITIGATION TYPE 2 TEMPLATE & SCHEDULES
L2.05	LANDSCAPE MITIGATION TYPE 2 TEMPLATE & SCHEDULES
L2.06	LANDSCAPE MITIGATION TYPE 2 TEMPLATE & SCHEDULES
L2.07	LANDSCAPE MITIGATION TYPE 2 TEMPLATE & SCHEDULES
L2.08	LANDSCAPE MITIGATION TYPE 3 TEMPLATE & SCHEDULES
L2.09	LANDSCAPE MITIGATION TYPE 3 TEMPLATE & SCHEDULES

UNDER NEW YORK STATE EDUCATION LAW ARTICLE 145 (ENGINEERING), SECTION 7209 (2), IT IS A VIOLATION OF THE LAW FOR ANY PERSON, UNLESS ACTING UNDER THE DIRECTION OF A LICENSED PROFESSIONAL ENGINEER, TO ALTER THIS DOCUMENT.

PRELIMINARY
NOT FOR CONSTRUCTION

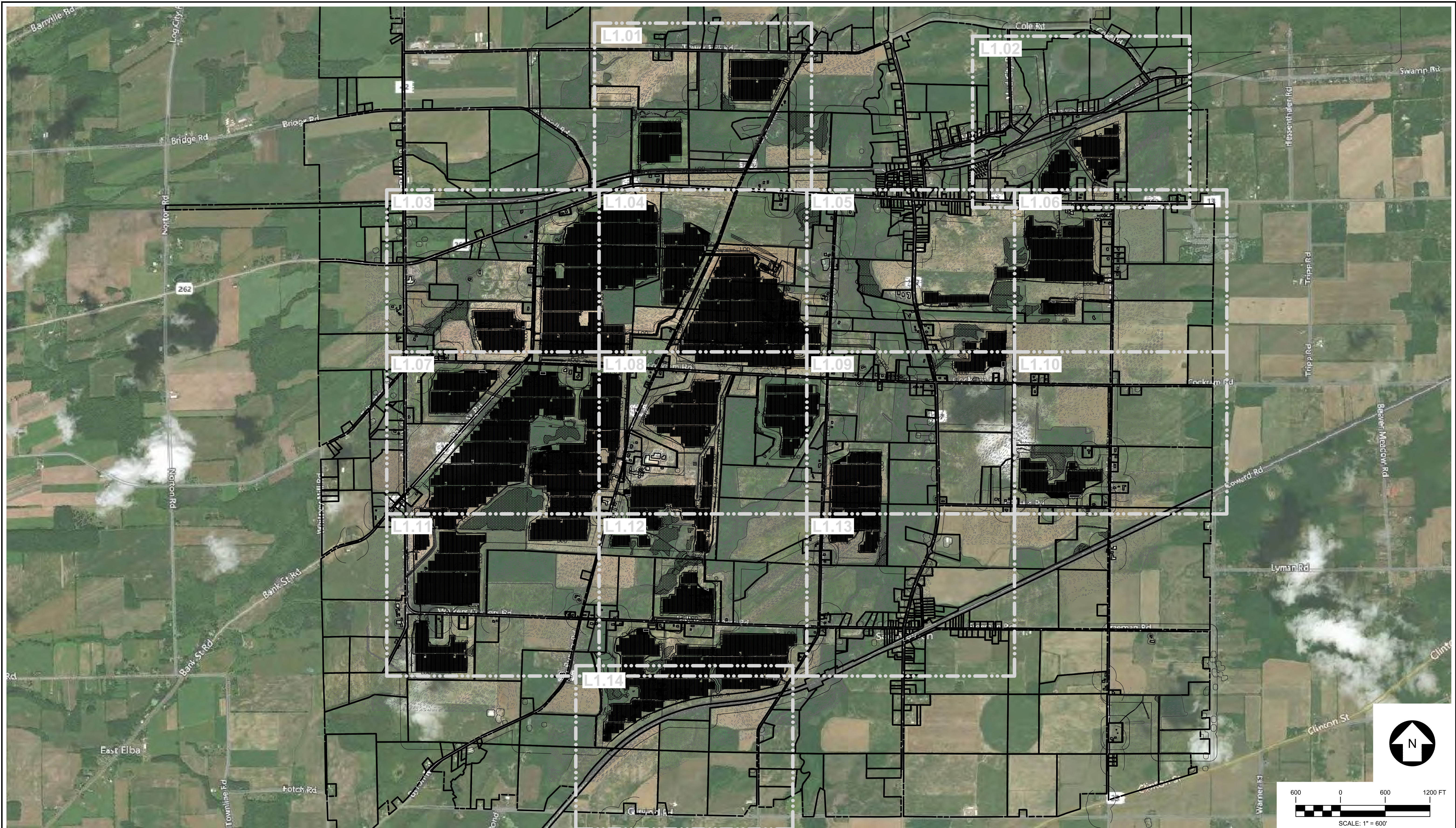


PREPARED FOR:

700 Universe Blvd,
Juno Beach, FL 33408

4900 RITTER ROAD MECHANICSBURG, PA		TRC PROJECT NO: 328807.0000			
REV	DESCRIPTION	DATE	DES	CHK	APP

MR DESIGNED	PRELIMINARY			
TKM DRAWN	LANDSCAPE PLAN			
MR CHECKED	EXCELSIOR SOLAR ENERGY CENTER, LLC			
MR APPROVED	COVER SHEET			
	TOWN OF BYRON	GENESEE COUNTY, NY		
REVIEW 1	08/2020 DATE		L0.00	REV. A
REVIEW 2	AS NOTED SCALE			



UNDER NEW YORK STATE EDUCATION LAW ARTICLE 145 (ENGINEERING), SECTION 7209 (2), IT IS A VIOLATION OF THE LAW FOR ANY PERSON, UNLESS ACTING UNDER THE DIRECTION OF A LICENSED PROFESSIONAL ENGINEER, TO ALTER THIS DOCUMENT.

PRELIMINARY
NOT FOR CONSTRUCTION



PREPARED FOR:
NEXTERA ENERGY
700 Universe Blvd,
Juno Beach, FL 33408

TRC 4900 RITTER ROAD
MECHANICSBURG, PA

TRC PROJECT NO: 328807.0000

REV	DESCRIPTION	DATE	DES	CHK	APP

MR DESIGNED	
TKM DRAWN	
MR CHECKED	
MR APPROVED	
REVIEW 1	
REVIEW 2	

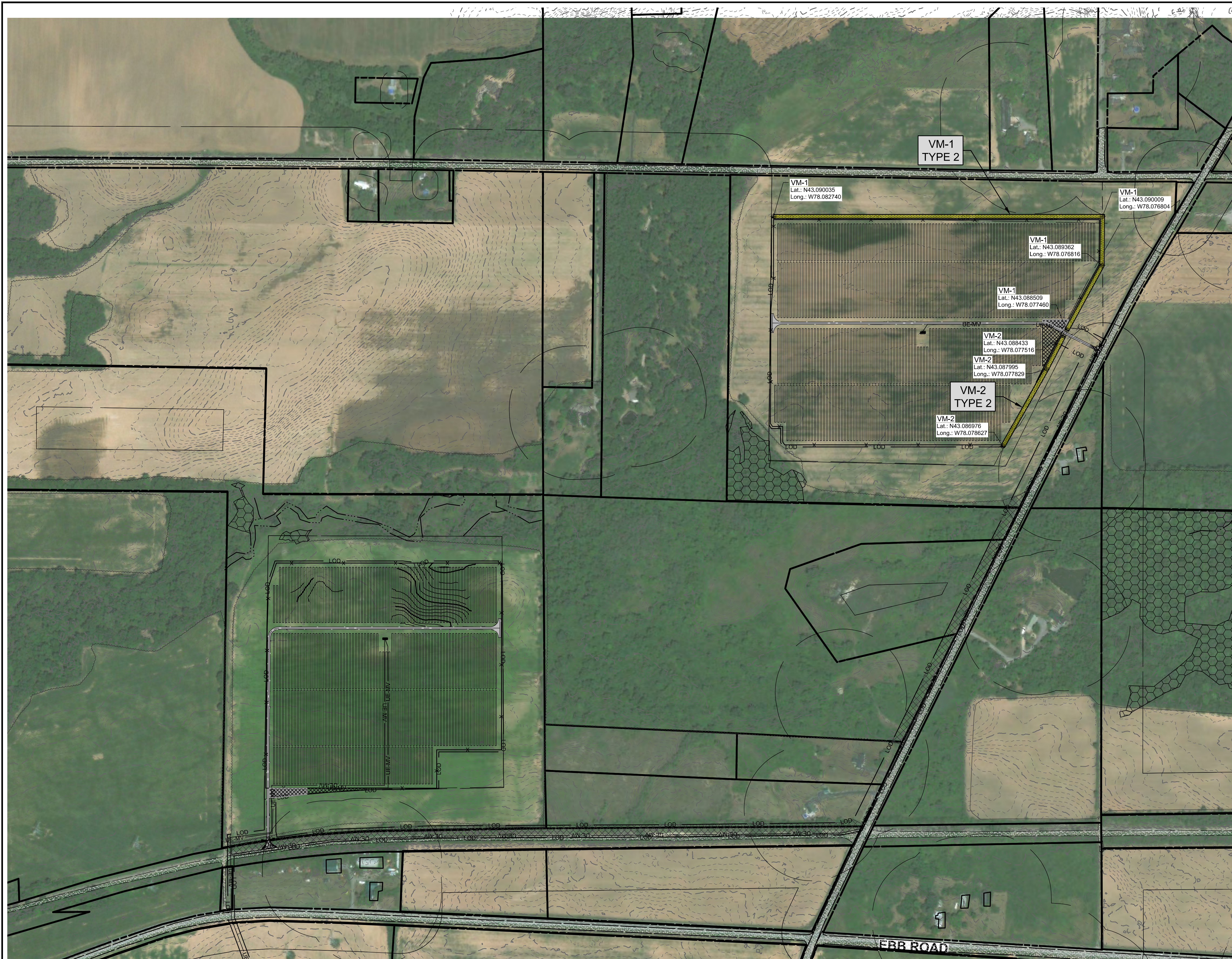
PRELIMINARY
LANDSCAPE PLAN
EXCELSIOR SOLAR ENERGY CENTER, LLC
OVERALL LANDSCAPE PLAN
TOWN OF BYRON GENESEE COUNTY, NY

08/2020
DATE
AS NOTED
SCALE



L1.00

REV.
A

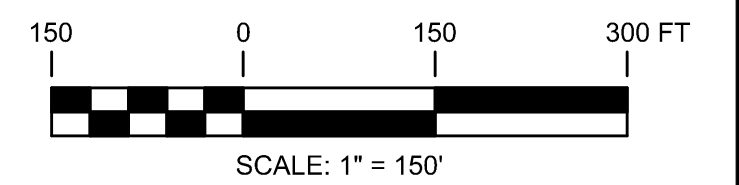
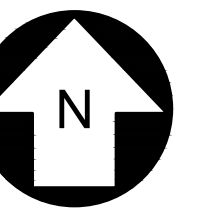


LEGEND

- VISUAL MITIGATION AREA DELINEATION
- TYPE 1 - LIMITED/MINIMUM SCREENING
- TYPE 2 - STANDARD/TYPICAL SCREENING
- TYPE 3 - ROBUST/MAXIMUM SCREENING

VEGETATIVE BUFFER / SCREEN MITIGATION TABLE			
POINT #	MITIGATION SECTION	LATITUDE	LONGITUDE
1	VM-1	N 43.090035	W 78.082740
2	VM-1	N 43.090009	W 78.076804
3	VM-1	N 43.089362	W 78.076816
4	VM-1	N 43.088509	W 78.077460

VEGETATIVE BUFFER / SCREEN MITIGATION TABLE			
POINT #	MITIGATION SECTION	LATITUDE	LONGITUDE
5	VM-2	N 43.088433	W 78.077516
6	VM-2	N 43.087995	W 78.077829
7	VM-2	N 43.086976	W 78.078627



UNDER NEW YORK STATE EDUCATION LAW ARTICLE 145 (ENGINEERING), SECTION 7209 (2), IT IS A VIOLATION OF THE LAW FOR ANY PERSON, UNLESS ACTING UNDER THE DIRECTION OF A LICENSED PROFESSIONAL ENGINEER, TO ALTER THIS DOCUMENT.

PRELIMINARY
NOT FOR CONSTRUCTION



PREPARED FOR:
NEXTERA ENERGY
700 Universe Blvd,
Juno Beach, FL 33408



4900 RITTER ROAD
MECHANICSBURG, PA

TRC PROJECT NO: 328807.0000

REV	DESCRIPTION	DATE	DES	CHK	APP

MR DESIGNED
TKM DRAWN
MR CHECKED
MR APPROVED
REVIEW 1
REVIEW 2

PRELIMINARY
LANDSCAPE PLAN
EXCELSIOR SOLAR ENERGY CENTER, LLC
ENLARGED LANDSCAPE PLAN
TOWN OF BYRON GENESEE COUNTY, NY


08/2020
DATE
AS NOTED
SCALE

L1.01

REV. A

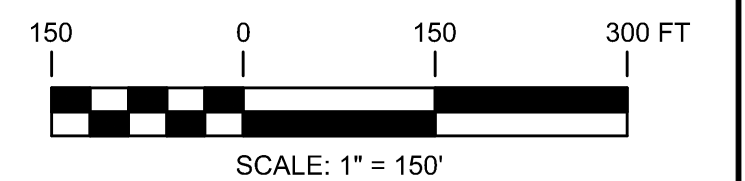
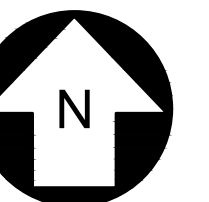


LEGEND

-  VISUAL MITIGATION AREA DELINEATION
- TYPE 1 - LIMITED/MINIMUM SCREENING
- TYPE 2 - STANDARD/TYPICAL SCREENING
- TYPE 3 - ROBUST/MAXIMUM SCREENING

VEGETATIVE BUFFER / SCREEN MITIGATION TABLE			
POINT #	MITIGATION SECTION	LATITUDE	LONGITUDE
8	VM-3	N 43.083227	W 78.049812
9	VM-3	N 43.082965	W 78.050352
10	VM-3	N 43.082442	W 78.050757
11	VM-3	N 43.082205	W 78.050970
12	VM-3	N 43.080742	W 78.052507

VEGETATIVE BUFFER / SCREEN MITIGATION TABLE			
POINT #	MITIGATION SECTION	LATITUDE	LONGITUDE
13	VM-4	N 43.080181	W 78.051722
14	VM-4	N 43.080167	W 78.048849



UNDER NEW YORK STATE EDUCATION LAW ARTICLE 145 (ENGINEERING), SECTION 7209 (2), IT IS A VIOLATION OF THE LAW FOR ANY PERSON, UNLESS ACTING UNDER THE DIRECTION OF A LICENSED PROFESSIONAL ENGINEER, TO ALTER THIS DOCUMENT.

PRELIMINARY
NOT FOR CONSTRUCTION



PREPARED FOR:
NEXTERA ENERGY
700 Universe Blvd.
Juno Beach, FL 33408

TRC 4900 RITTER ROAD
MECHANICSBURG, PA


TRC PROJECT NO: 328807.0000

REV	DESCRIPTION	DATE	DES	CHK	APP

MR DESIGNED
TKM DRAWN
MR CHECKED
MR APPROVED
REVIEW 1
REVIEW 2

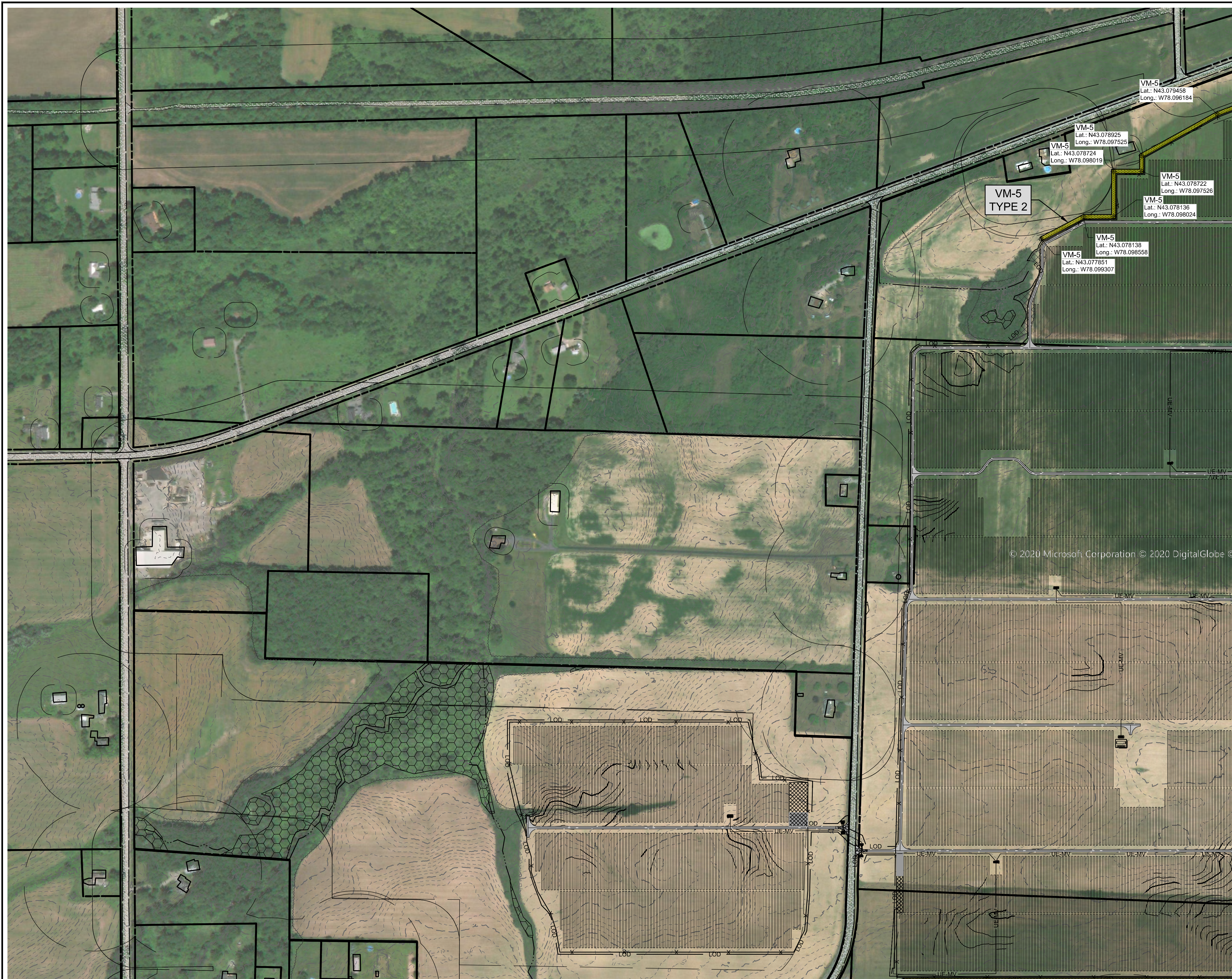
PRELIMINARY
LANDSCAPE PLAN
EXCELSIOR SOLAR ENERGY CENTER, LLC
ENLARGED LANDSCAPE PLAN
TOWN OF BYRON GENESEE COUNTY, NY

08/2020
DATE
AS NOTED
SCALE



L1.02

REV. A

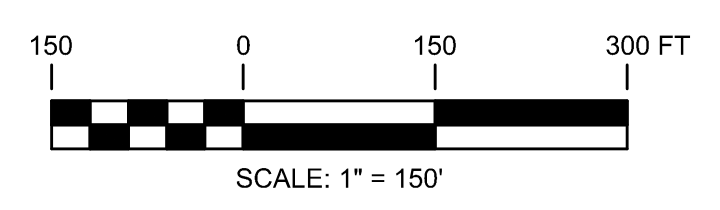
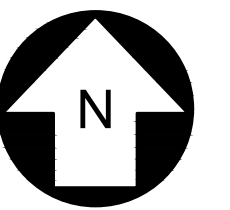


LEGEND

- VISUAL MITIGATION AREA DELINEATION
- TYPE 1 - LIMITED/MINIMUM SCREENING
- TYPE 2 - STANDARD/TYPICAL SCREENING
- TYPE 3 - ROBUST/MAXIMUM SCREENING

VEGETATIVE BUFFER / SCREEN MITIGATION TABLE			
POINT #	MITIGATION SECTION	LATITUDE	LONGITUDE
15	VM-5	N 43.077851	W 78.099307
16	VM-5	N 43.078138	W 78.098558
17	VM-5	N 43.078136	W 78.098024
18	VM-5	N 43.078724	W 78.098019
19	VM-5	N 43.078722	W 78.097526
20	VM-5	N 43.078925	W 78.097525
21	VM-5	N 43.079458	W 78.096184
22	VM-5	N 43.079705	W 78.095274
23	VM-5	N 43.079692	W 78.092156

© 2020 Microsoft Corporation © 2020 DigitalGlobe ©C



UNDER NEW YORK STATE EDUCATION LAW ARTICLE 145 (ENGINEERING), SECTION 7209 (2), IT IS A VIOLATION OF THE LAW FOR ANY PERSON, UNLESS ACTING UNDER THE DIRECTION OF A LICENSED PROFESSIONAL ENGINEER, TO ALTER THIS DOCUMENT.

PRELIMINARY
NOT FOR CONSTRUCTION



PREPARED FOR:
NEXTERA ENERGY
700 Universe Blvd,
Juno Beach, FL 33408



4900 RITTER ROAD
MECHANICSBURG, PA

TRC PROJECT NO: 328807.0000

REV	DESCRIPTION	DATE	DES	CHK	APP

MR DESIGNED
TKM DRAWN
MR CHECKED
MR APPROVED
REVIEW 1
REVIEW 2

PRELIMINARY
LANDSCAPE PLAN
EXCELSIOR SOLAR ENERGY CENTER, LLC
ENLARGED LANDSCAPE PLAN
TOWN OF BYRON GENESEE COUNTY, NY

08/2020
DATE
AS NOTED
SCALE



L1.03

REV. A



LEGEND

- VISUAL MITIGATION AREA DELINEATION
- TYPE 1 - LIMITED/MINIMUM SCREENING
- TYPE 2 - STANDARD/TYPICAL SCREENING
- TYPE 3 - ROBUST/MAXIMUM SCREENING

VEGETATIVE BUFFER / SCREEN MITIGATION TABLE			
POINT #	MITIGATION SECTION	LATITUDE	LONGITUTDE
15	VM-5	N 43.077851	W 78.099307
16	VM-5	N 43.078138	W 78.098558
17	VM-5	N 43.078136	W 78.098024
18	VM-5	N 43.078724	W 78.098019
19	VM-5	N 43.078722	W 78.097526
20	VM-5	N 43.078925	W 78.097525
21	VM-5	N 43.079458	W 78.096184
22	VM-5	N 43.079705	W 78.095274
23	VM-5	N 43.079692	W 78.092156

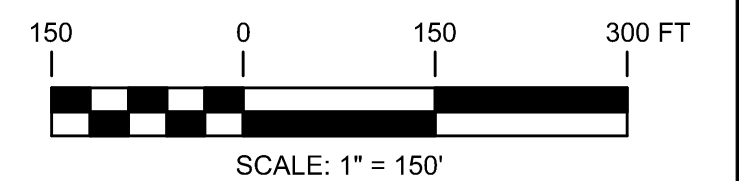
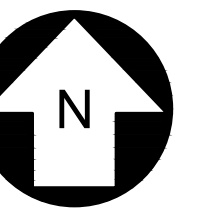
VEGETATIVE BUFFER / SCREEN MITIGATION TABLE			
POINT #	MITIGATION SECTION	LATITUDE	LONGITUTDE
30	VM-8	N 43.070561	W 78.095332
31	VM-8	N 43.070227	W 78.095334
32	VM-8	N 43.070219	W 78.093453
33	VM-8	N 43.069099	W 78.093481
34	VM-8	N 43.068228	W 78.093551
35	VM-8	N 43.068235	W 78.095096

VEGETATIVE BUFFER / SCREEN MITIGATION TABLE			
POINT #	MITIGATION SECTION	LATITUDE	LONGITUTDE
24	VM-6	N 43.079691	W 78.091957
25	VM-6	N 43.079687	W 78.091085
26	VM-6	N 43.079414	W 78.090355
27	VM-6	N 43.078699	W 78.089938

VEGETATIVE BUFFER / SCREEN MITIGATION TABLE			
POINT #	MITIGATION SECTION	LATITUDE	LONGITUTDE
36	VM-9	N 43.075476	W 78.083937
37	VM-9	N 43.074806	W 78.084382
38	VM-9	N 43.073983	W 78.084972
39	VM-9	N 43.069136	W 78.088156

VEGETATIVE BUFFER / SCREEN MITIGATION TABLE			
POINT #	MITIGATION SECTION	LATITUDE	LONGITUTDE
40	VM-10	N 43.068986	W 78.088194
41	VM-10	N 43.068228	W 78.088061
42	VM-10	N 43.067678	W 78.086715

VEGETATIVE BUFFER / SCREEN MITIGATION TABLE			
POINT #	MITIGATION SECTION	LATITUDE	LONGITUTDE
52	VM-15	N 43.067404	W 78.073814
53	VM-15	N 43.068219	W 78.073807
54	VM-15	N 43.069096	W 78.073691
55	VM-15	N 43.069846	W 78.073684
56	VM-15	N 43.070439	W 78.073879
57	VM-15	N 43.070444	W 78.075066
58	VM-15	N 43.070915	W 78.075867
59	VM-15	N 43.071145	W 78.075865



UNDER NEW YORK STATE EDUCATION LAW ARTICLE 145 (ENGINEERING), SECTION 7209 (2), IT IS A VIOLATION OF THE LAW FOR ANY PERSON, UNLESS ACTING UNDER THE DIRECTION OF A LICENSED PROFESSIONAL ENGINEER, TO ALTER THIS DOCUMENT.

PRELIMINARY
NOT FOR CONSTRUCTION



PREPARED FOR:

NEXTERA ENERGY

700 Universe Blvd,
Juno Beach, FL 33408

TRC 4900 RITTER ROAD
MECHANICSBURG, PA

TRC PROJECT NO: 328807.0000

REV	DESCRIPTION	DATE	DES	CHK	APP

MR DESIGNED
TKM DRAWN
MR CHECKED
MR APPROVED
REVIEW 1
REVIEW 2

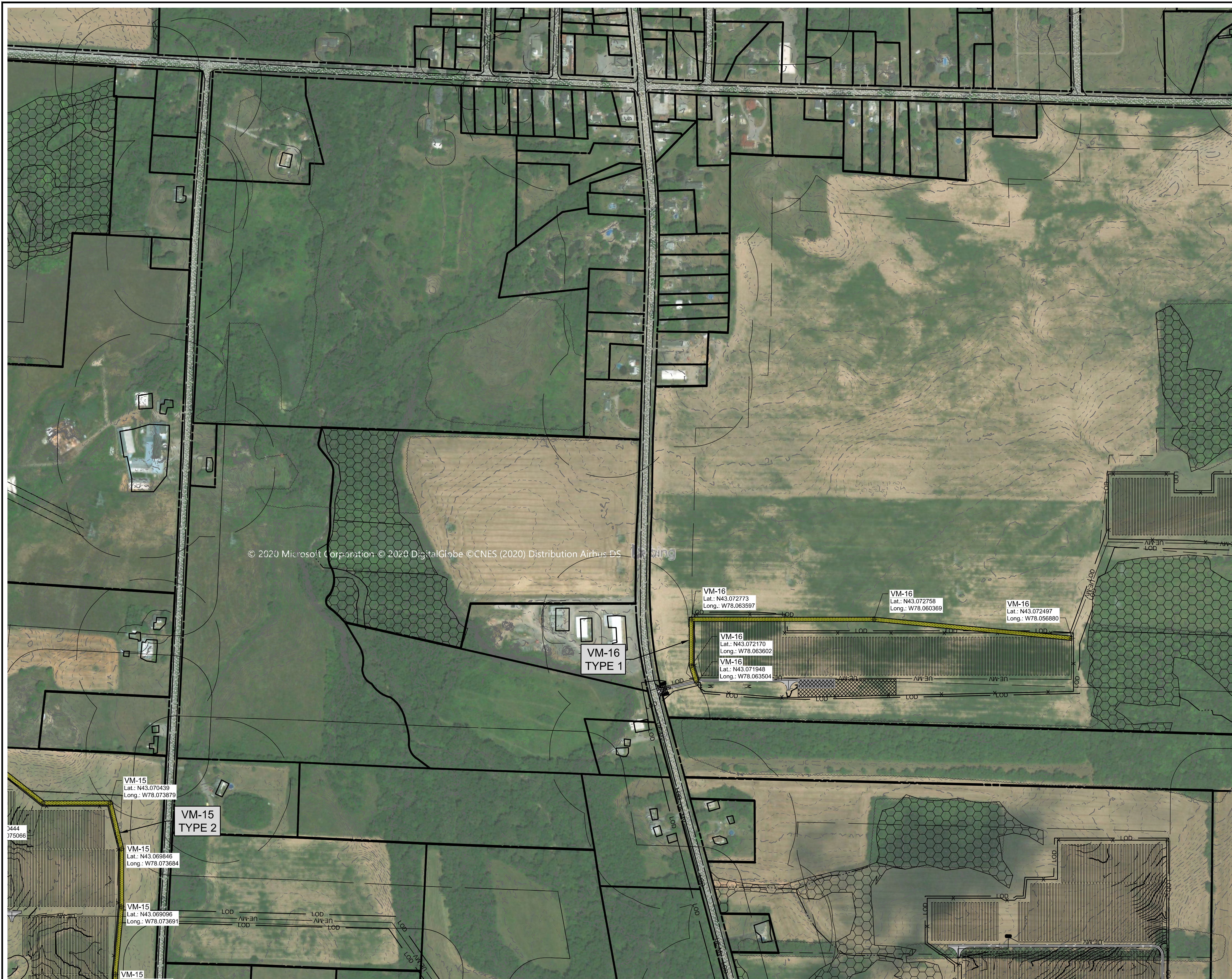
PRELIMINARY
LANDSCAPE PLAN
EXCELSIOR SOLAR ENERGY CENTER, LLC
ENLARGED LANDSCAPE PLAN
TOWN OF BYRON GENESEE COUNTY, NY

08/2020 DATE AS NOTED SCALE

TRC

L1.04

REV. A

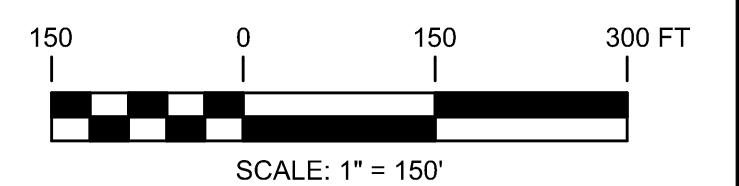
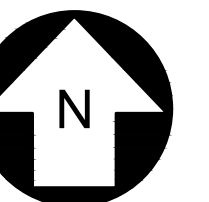


LEGEND

- VISUAL MITIGATION AREA DELINEATION
- TYPE 1 - LIMITED/MINIMUM SCREENING
- TYPE 2 - STANDARD/TYPICAL SCREENING
- TYPE 3 - ROBUST/MAXIMUM SCREENING

VEGETATIVE BUFFER / SCREEN MITIGATION TABLE			
POINT #	MITIGATION SECTION	LATITUDE	LONGITUDE
52	VM-15	N 43.067404	W 78.073814
53	VM-15	N 43.068219	W 78.073807
54	VM-15	N 43.069096	W 78.073691
55	VM-15	N 43.069846	W 78.073684
56	VM-15	N 43.070439	W 78.073879
57	VM-15	N 43.070444	W 78.075066
58	VM-15	N 43.070915	W 78.075867
59	VM-15	N 43.071145	W 78.075865

VEGETATIVE BUFFER / SCREEN MITIGATION TABLE			
POINT #	MITIGATION SECTION	LATITUDE	LONGITUDE
60	VM-16	N 43.072497	W 78.056880
61	VM-16	N 43.072758	W 78.060369
62	VM-16	N 43.072773	W 78.063597
63	VM-16	N 43.072170	W 78.063602
64	VM-16	N 43.071948	W 78.063504



UNDER NEW YORK STATE EDUCATION LAW ARTICLE 145 (ENGINEERING), SECTION 7209 (2), IT IS A VIOLATION OF THE LAW FOR ANY PERSON, UNLESS ACTING UNDER THE DIRECTION OF A LICENSED PROFESSIONAL ENGINEER, TO ALTER THIS DOCUMENT.

PRELIMINARY
NOT FOR CONSTRUCTION



PREPARED FOR:
NEXTERA ENERGY
700 Universe Blvd,
Juno Beach, FL 33408

TRC 4900 RITTER ROAD
MECHANICSBURG, PA

TRC PROJECT NO: 328807.0000

REV	DESCRIPTION	DATE	DES	CHK	APP

MR DESIGNED
TKM DRAWN
MR CHECKED
MR APPROVED
REVIEW 1
REVIEW 2

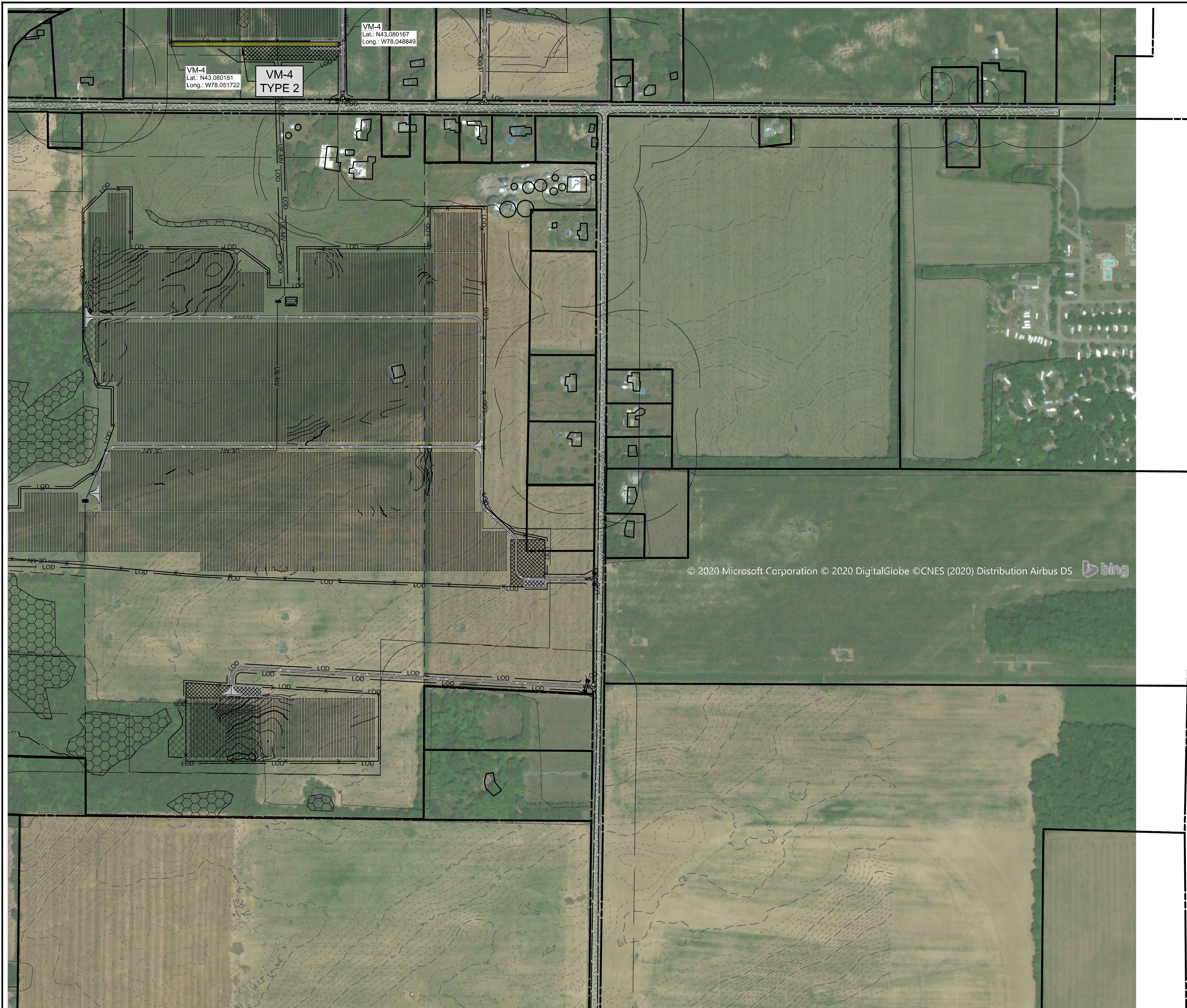
PRELIMINARY
LANDSCAPE PLAN
EXCELSIOR SOLAR ENERGY CENTER, LLC
ENLARGED LANDSCAPE PLAN
TOWN OF BYRON GENESEE COUNTY, NY

08/2020
DATE
AS NOTED
SCALE



L1.05

REV. A

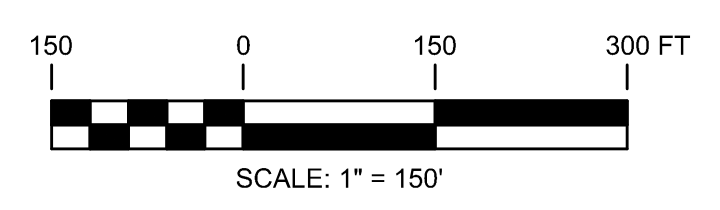
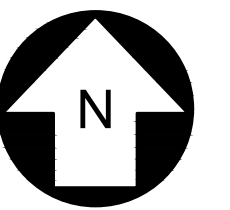


LEGEND

- VISUAL MITIGATION AREA DELINEATION
- TYPE 1 - LIMITED/MINIMUM SCREENING
- TYPE 2 - STANDARD/TYPICAL SCREENING
- TYPE 3 - ROBUST/MAXIMUM SCREENING

VEGETATIVE BUFFER / SCREEN MITIGATION TABLE			
POINT #	MITIGATION SECTION	LATITUDE	LONGITUDE
13	VM-4	N 43.080181	W 78.051722
14	VM-4	N 43.080167	W 78.048849

© 2020 Microsoft Corporation © 2020 DigitalGlobe ©CNES (2020) Distribution Airbus DS



UNDER NEW YORK STATE EDUCATION LAW ARTICLE 145 (ENGINEERING), SECTION 7209 (2), IT IS A VIOLATION OF THE LAW FOR ANY PERSON, UNLESS ACTING UNDER THE DIRECTION OF A LICENSED PROFESSIONAL ENGINEER, TO ALTER THIS DOCUMENT.

PRELIMINARY
NOT FOR CONSTRUCTION



PREPARED FOR:
NEXTERA ENERGY
700 Universe Blvd,
Juno Beach, FL 33408

		4900 RITTER ROAD MECHANICSBURG, PA		TRC PROJECT NO: 328807.0000	
REV	DESCRIPTION	DATE	DES	CHK	APP

MR DESIGNED	
TKM DRAWN	
MR CHECKED	
MR APPROVED	
REVIEW 1	
REVIEW 2	

PRELIMINARY
LANDSCAPE PLAN
EXCELSIOR SOLAR ENERGY CENTER, LLC
ENLARGED LANDSCAPE PLAN
TOWN OF BYRON GENESEE COUNTY, NY

08/2020
DATE
AS NOTED
SCALE

L1.06

REV.	A
------	---