



LEGEND

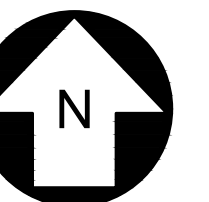
- VISUAL MITIGATION AREA DELINEATION
- TYPE 1 - LIMITED/MINIMUM SCREENING
- TYPE 2 - STANDARD/TYPICAL SCREENING
- TYPE 3 - ROBUST/MAXIMUM SCREENING

VEGETATIVE BUFFER / SCREEN MITIGATION TABLE			
POINT #	MITIGATION SECTION	LATITUDE	LONGITUDE
28	VM-7	N 43.068236	W 78.095283
29	VM-7	N 43.068263	W 78.101827

VEGETATIVE BUFFER / SCREEN MITIGATION TABLE			
POINT #	MITIGATION SECTION	LATITUDE	LONGITUDE
69	VM-18	N 43.067288	W 78.107589
70	VM-18	N 43.067296	W 78.109569
71	VM-18	N 43.067166	W 78.110255
72	VM-18	N 43.067175	W 78.112406
73	VM-18	N 43.066597	W 78.112847
74	VM-18	N 43.066184	W 78.112850
75	VM-18	N 43.065734	W 78.113128
76	VM-18	N 43.064157	W 78.113140

VEGETATIVE BUFFER / SCREEN MITIGATION TABLE			
POINT #	MITIGATION SECTION	LATITUDE	LONGITUDE
77	VM-19	N 43.067072	W 78.100189
78	VM-19	N 43.066814	W 78.100189
79	VM-19	N 43.066560	W 78.100077
80	VM-19	N 43.066130	W 78.100080
81	VM-19	N 43.066130	W 78.099308
82	VM-19	N 43.065868	W 78.098603
83	VM-19	N 43.065582	W 78.098605
84	VM-19	N 43.065410	W 78.098458

VEGETATIVE BUFFER / SCREEN MITIGATION TABLE			
POINT #	MITIGATION SECTION	LATITUDE	LONGITUDE
85	VM-20	N 43.065405	W 78.098050
86	VM-20	N 43.065813	W 78.097829
87	VM-20	N 43.066121	W 78.097237
88	VM-20	N 43.066120	W 78.096915
89	VM-20	N 43.066935	W 78.096909
90	VM-20	N 43.067043	W 78.096824



UNDER NEW YORK STATE EDUCATION LAW ARTICLE 145 (ENGINEERING), SECTION 7209 (2), IT IS A VIOLATION OF THE LAW FOR ANY PERSON, UNLESS ACTING UNDER THE DIRECTION OF A LICENSED PROFESSIONAL ENGINEER, TO ALTER THIS DOCUMENT.

PRELIMINARY
NOT FOR CONSTRUCTION



PREPARED FOR:
NEXTERA ENERGY
700 Universe Blvd,
Juno Beach, FL 33408

TRC 4900 RITTER ROAD
MECHANICSBURG, PA

TRC PROJECT NO: 328807.0000

REV	DESCRIPTION	DATE	DES	CHK	APP

MR DESIGNED
TKM DRAWN
MR CHECKED
MR APPROVED
REVIEW 1
REVIEW 2

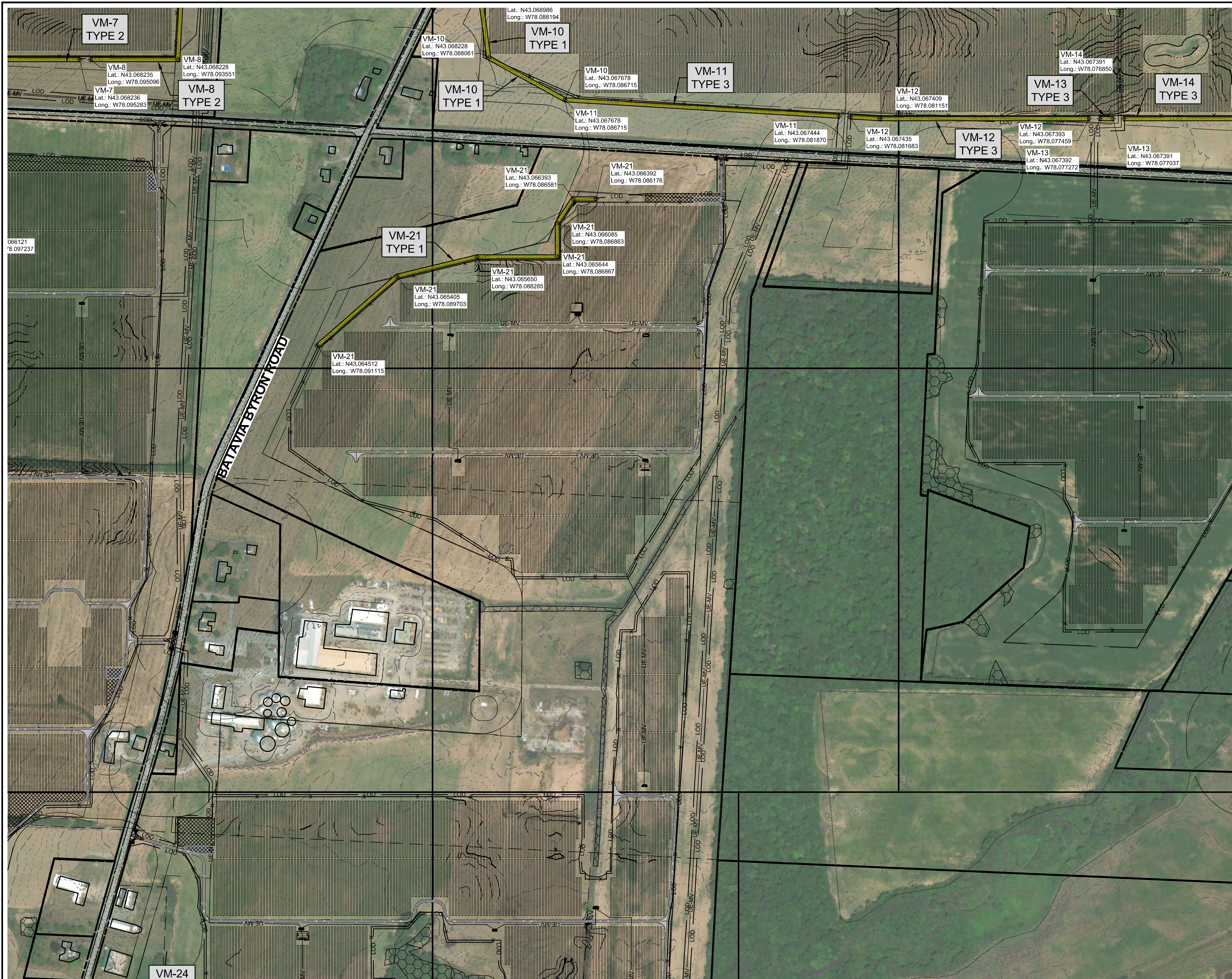
PRELIMINARY
LANDSCAPE PLAN
EXCELSIOR SOLAR ENERGY CENTER, LLC
ENLARGED LANDSCAPE PLAN
TOWN OF BYRON GENESEE COUNTY, NY

08/2020
DATE AS NOTED
SCALE

TRC

L1.07

REV. A



LEGEND

- VISUAL MITIGATION AREA DELINEATION
- TYPE 1 - LIMITED/MINIMUM SCREENING
- TYPE 2 - STANDARD/TYPICAL SCREENING
- TYPE 3 - ROBUST/MAXIMUM SCREENING

VEGETATIVE BUFFER / SCREEN MITIGATION TABLE			
POINT #	MITIGATION SECTION	LATITUDE	LONGITUDE
30	VM-8	N 43.070561	W 78.095332
31	VM-8	N 43.070227	W 78.095334
32	VM-8	N 43.070219	W 78.093453
33	VM-8	N 43.069099	W 78.093481
34	VM-8	N 43.068228	W 78.093551
35	VM-8	N 43.068235	W 78.095096

VEGETATIVE BUFFER / SCREEN MITIGATION TABLE			
POINT #	MITIGATION SECTION	LATITUDE	LONGITUDE
40	VM-10	N 43.068986	W 78.088194
41	VM-10	N 43.068228	W 78.088061
42	VM-10	N 43.067678	W 78.086715

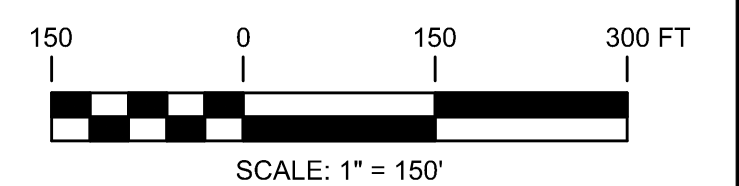
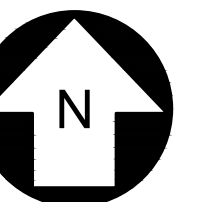
VEGETATIVE BUFFER / SCREEN MITIGATION TABLE			
POINT #	MITIGATION SECTION	LATITUDE	LONGITUDE
43	VM-11	N 43.067678	W 78.086715
44	VM-11	N 43.067444	W 78.081870

VEGETATIVE BUFFER / SCREEN MITIGATION TABLE			
POINT #	MITIGATION SECTION	LATITUDE	LONGITUDE
45	VM-12	N 43.067435	W 78.081683
46	VM-12	N 43.067409	W 78.081151
47	VM-12	N 43.067393	W 78.077459

VEGETATIVE BUFFER / SCREEN MITIGATION TABLE			
POINT #	MITIGATION SECTION	LATITUDE	LONGITUDE
48	VM-13	N 43.067392	W 78.077272
49	VM-13	N 43.067391	W 78.077037

VEGETATIVE BUFFER / SCREEN MITIGATION TABLE			
POINT #	MITIGATION SECTION	LATITUDE	LONGITUDE
50	VM-14	N 43.067391	W 78.076850
51	VM-14	N 43.067377	W 78.073777

VEGETATIVE BUFFER / SCREEN MITIGATION TABLE			
POINT #	MITIGATION SECTION	LATITUDE	LONGITUDE
91	VM-21	N 43.064512	W 78.091115
92	VM-21	N 43.065405	W 78.089703
93	VM-21	N 43.065650	W 78.088285
94	VM-21	N 43.065644	W 78.086867
95	VM-21	N 43.066085	W 78.086863
96	VM-21	N 43.066393	W 78.086581
97	VM-21	N 43.066392	W 78.086176



UNDER NEW YORK STATE EDUCATION LAW ARTICLE 145 (ENGINEERING), SECTION 7209 (2), IT IS A VIOLATION OF THE LAW FOR ANY PERSON, UNLESS ACTING UNDER THE DIRECTION OF A LICENSED PROFESSIONAL ENGINEER, TO ALTER THIS DOCUMENT.

PRELIMINARY
NOT FOR CONSTRUCTION



PREPARED FOR:

NEXTERA ENERGY

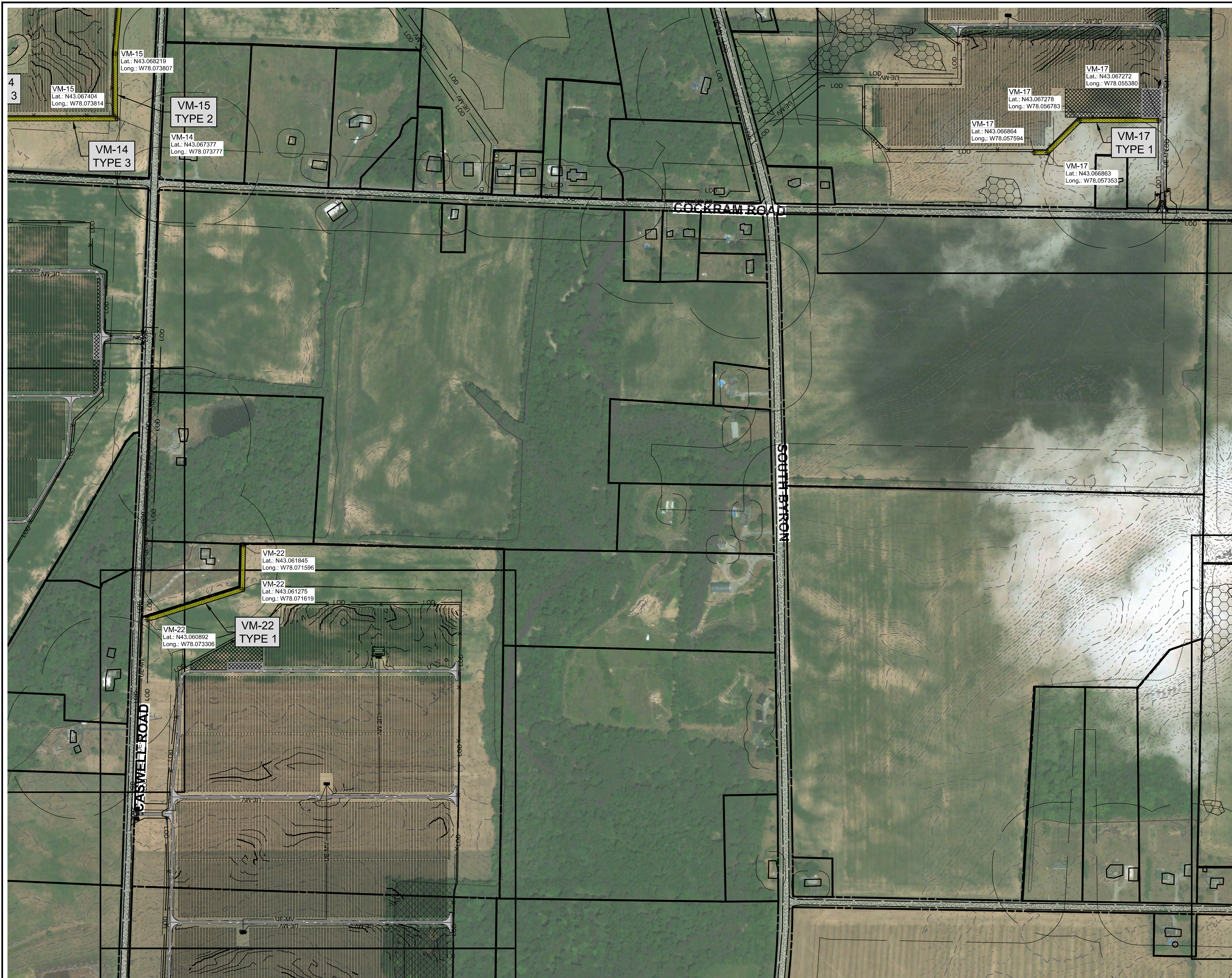
700 Universe Blvd,
Juno Beach, FL 33408

TRC 4900 RITTER ROAD
MECHANICSBURG, PA

TRC PROJECT NO: 328807.0000

REV	DESCRIPTION	DATE	DES	CHK	APP

MR DESIGNED	<p>PRELIMINARY LANDSCAPE PLAN EXCELSIOR SOLAR ENERGY CENTER, LLC ENLARGED LANDSCAPE PLAN TOWN OF BYRON GENESEE COUNTY, NY</p>		<p>L1.08</p>	<p>REV. A</p>
TKM DRAWN				
MR CHECKED				
MR APPROVED				
REVIEW 1	08/2020 DATE	AS NOTED SCALE		
REVIEW 2				



LEGEND

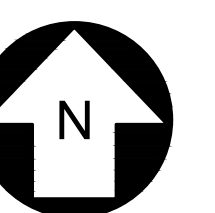
- VISUAL MITIGATION AREA DELINEATION
- TYPE 1 - LIMITED/MINIMUM SCREENING
- TYPE 2 - STANDARD/TYPICAL SCREENING
- TYPE 3 - ROBUST/MAXIMUM SCREENING

VEGETATIVE BUFFER / SCREEN MITIGATION TABLE			
POINT #	MITIGATION SECTION	LATITUDE	LONGITUDE
50	VM-14	N 43.067391	W 78.076850
51	VM-14	N 43.067377	W 78.073777

VEGETATIVE BUFFER / SCREEN MITIGATION TABLE			
POINT #	MITIGATION SECTION	LATITUDE	LONGITUDE
52	VM-15	N 43.067404	W 78.073814
53	VM-15	N 43.068219	W 78.073807
54	VM-15	N 43.069096	W 78.073691
55	VM-15	N 43.069846	W 78.073684
56	VM-15	N 43.070439	W 78.073879
57	VM-15	N 43.070444	W 78.075066
58	VM-15	N 43.070915	W 78.075867
59	VM-15	N 43.071145	W 78.075865

VEGETATIVE BUFFER / SCREEN MITIGATION TABLE			
POINT #	MITIGATION SECTION	LATITUDE	LONGITUDE
65	VM-17	N 43.066864	W 78.057594
66	VM-17	N 43.066863	W 78.057353
67	VM-17	N 43.067278	W 78.056783
68	VM-17	N 43.067272	W 78.055380

VEGETATIVE BUFFER / SCREEN MITIGATION TABLE			
POINT #	MITIGATION SECTION	LATITUDE	LONGITUDE
98	VM-22	N 43.061845	W 78.071596
99	VM-22	N 43.061275	W 78.071619
100	VM-22	N 43.060892	W 78.073306



UNDER NEW YORK STATE EDUCATION LAW ARTICLE 145 (ENGINEERING), SECTION 7209 (2), IT IS A VIOLATION OF THE LAW FOR ANY PERSON, UNLESS ACTING UNDER THE DIRECTION OF A LICENSED PROFESSIONAL ENGINEER, TO ALTER THIS DOCUMENT.

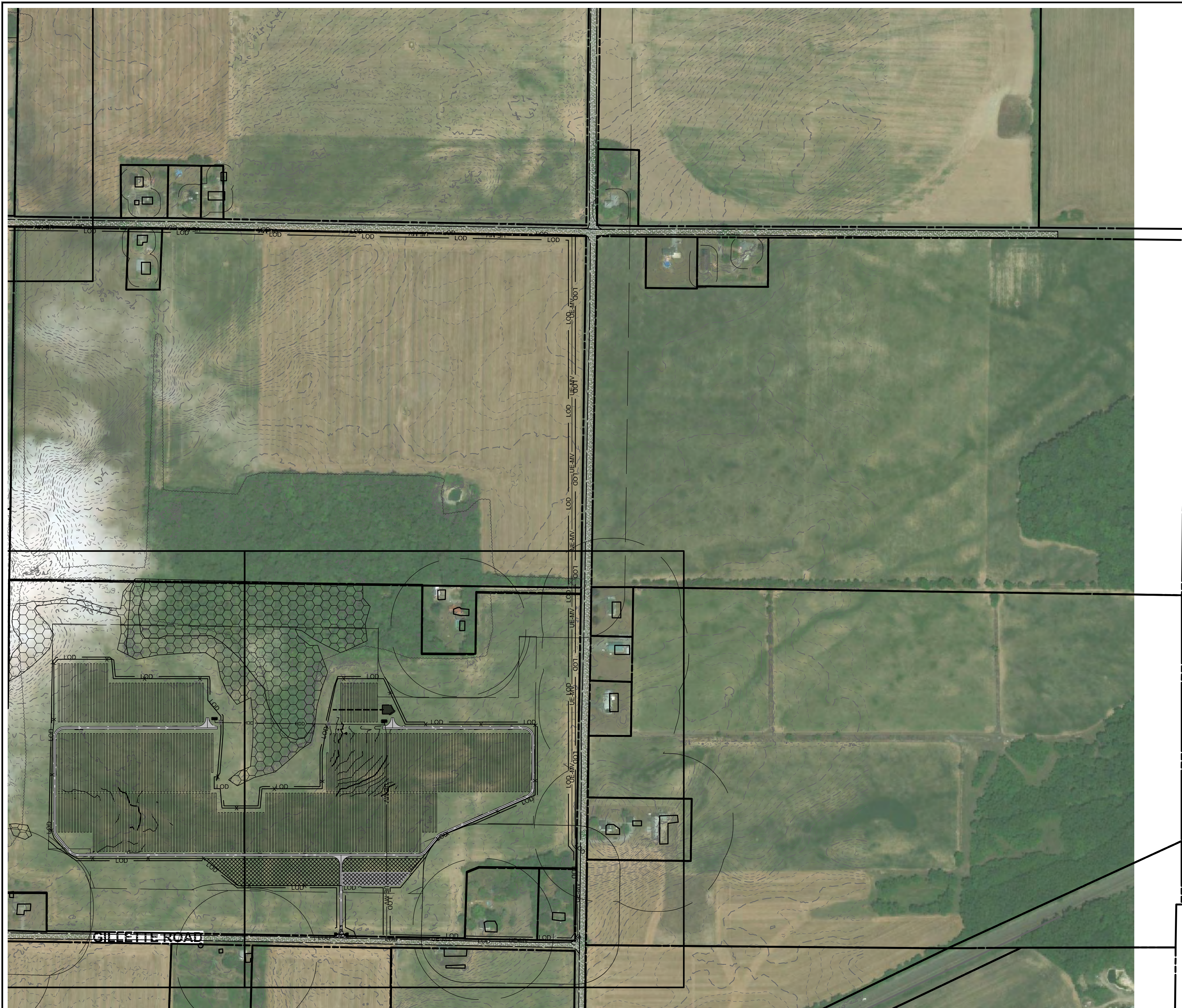
PRELIMINARY
NOT FOR CONSTRUCTION




PREPARED FOR:
NEXTERA ENERGY
700 Universe Blvd,
Juno Beach, FL 33408

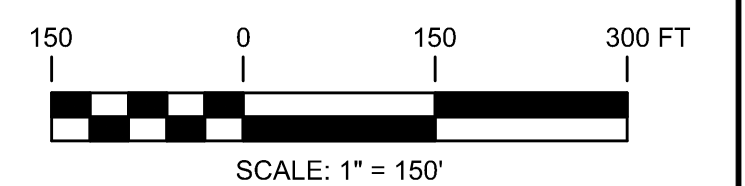
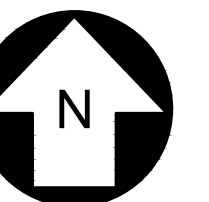
TRC 4900 RITTER ROAD MECHANICSBURG, PA		TRC PROJECT NO: 328807.0000			
REV	DESCRIPTION	DATE	DES	CHK	APP

MR DESIGNED TKM DRAWN MR CHECKED MR APPROVED	PRELIMINARY LANDSCAPE PLAN EXCELSIOR SOLAR ENERGY CENTER, LLC ENLARGED LANDSCAPE PLAN TOWN OF BYRON GENESEE COUNTY, NY		08/2020 DATE AS NOTED SCALE		L1.09	REV. A
---	---	--	--------------------------------------	--	-------	-----------



LEGEND

-  VISUAL MITIGATION AREA DELINEATION
- TYPE 1 - LIMITED/MINIMUM SCREENING
- TYPE 2 - STANDARD/TYPICAL SCREENING
- TYPE 3 - ROBUST/MAXIMUM SCREENING



UNDER NEW YORK STATE EDUCATION LAW ARTICLE 145 (ENGINEERING), SECTION 7209 (2), IT IS A VIOLATION OF THE LAW FOR ANY PERSON, UNLESS ACTING UNDER THE DIRECTION OF A LICENSED PROFESSIONAL ENGINEER, TO ALTER THIS DOCUMENT.

PRELIMINARY
NOT FOR CONSTRUCTION



PREPARED FOR:
NEXTERA ENERGY
700 Universe Blvd,
Juno Beach, FL 33408

TRC 4900 RITTER ROAD
MECHANICSBURG, PA

TRC PROJECT NO: 328807.0000

REV	DESCRIPTION	DATE	DES	CHK	APP

MR DESIGNED	
TKM DRAWN	
MR CHECKED	
MR APPROVED	
REVIEW 1	
REVIEW 2	

PRELIMINARY
LANDSCAPE PLAN
EXCELSIOR SOLAR ENERGY CENTER, LLC
ENLARGED LANDSCAPE PLAN
TOWN OF BYRON GENESEE COUNTY, NY

08/2020
DATE
AS NOTED
SCALE



L1.10

REV.
A

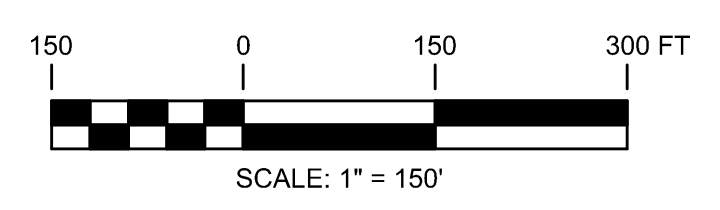
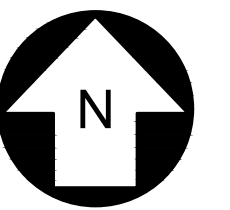


LEGEND

- VISUAL MITIGATION AREA DELINEATION
- TYPE 1 - LIMITED/MINIMUM SCREENING
- TYPE 2 - STANDARD/TYPICAL SCREENING
- TYPE 3 - ROBUST/MAXIMUM SCREENING

VEGETATIVE BUFFER / SCREEN MITIGATION TABLE			
POINT #	MITIGATION SECTION	LATITUDE	LONGITUDE
101	VM-23	N 43.056535	W 78.097034
102	VM-23	N 43.056304	W 78.097094
103	VM-23	N 43.056008	W 78.097037
104	VM-23	N 43.055501	W 78.097041
105	VM-23	N 43.054699	W 78.097341

VEGETATIVE BUFFER / SCREEN MITIGATION TABLE			
POINT #	MITIGATION SECTION	LATITUDE	LONGITUDE
115	VM-26	N 43.048913	W 78.114132
116	VM-26	N 43.048900	W 78.113402
117	VM-26	N 43.048699	W 78.113395
118	VM-26	N 43.048496	W 78.113305
119	VM-26	N 43.047318	W 78.113314
120	VM-26	N 43.047317	W 78.113161
121	VM-26	N 43.047075	W 78.113133
122	VM-26	N 43.047067	W 78.111375
123	VM-26	N 43.047310	W 78.111344
124	VM-26	N 43.047302	W 78.109480
125	VM-26	N 43.046785	W 78.109484



UNDER NEW YORK STATE EDUCATION LAW ARTICLE 145 (ENGINEERING), SECTION 7209 (2), IT IS A VIOLATION OF THE LAW FOR ANY PERSON, UNLESS ACTING UNDER THE DIRECTION OF A LICENSED PROFESSIONAL ENGINEER, TO ALTER THIS DOCUMENT.

PRELIMINARY
NOT FOR CONSTRUCTION



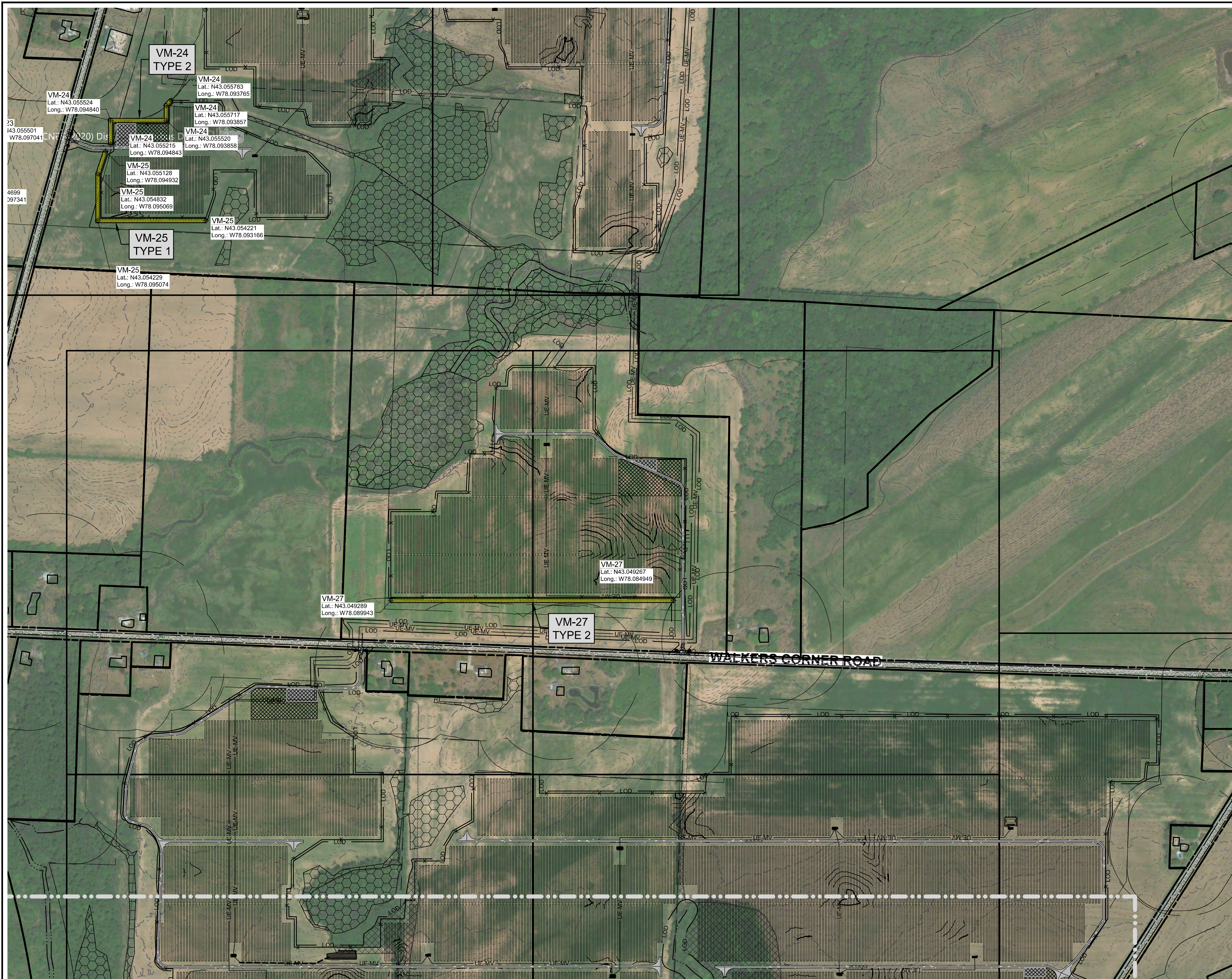
PREPARED FOR:

 700 Universe Blvd,
 Juno Beach, FL 33408

4900 RITTER ROAD
 MECHANICSBURG, PA
 TRC PROJECT NO: 328807.0000

REV	DESCRIPTION	DATE	DES	CHK	APP

MR DESIGNED TKM DRAWN MR CHECKED MR APPROVED	PRELIMINARY LANDSCAPE PLAN EXCELSIOR SOLAR ENERGY CENTER, LLC ENLARGED LANDSCAPE PLAN TOWN OF BYRON GENESEE COUNTY, NY		L1.11	REV. A
REVIEW 1 REVIEW 2	08/2020 DATE AS NOTED SCALE	TRC	L1.11	REV. A



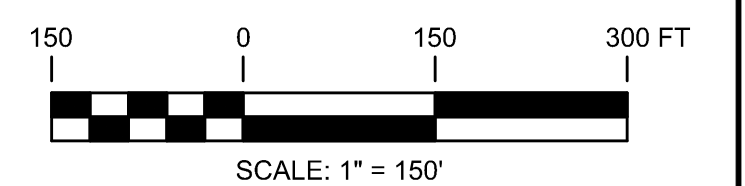
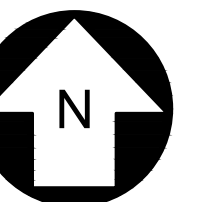
LEGEND

- VISUAL MITIGATION AREA DELINEATION
- TYPE 1 - LIMITED/MINIMUM SCREENING
- TYPE 2 - STANDARD/TYPICAL SCREENING
- TYPE 3 - ROBUST/MAXIMUM SCREENING

VEGETATIVE BUFFER / SCREEN MITIGATION TABLE			
POINT #	MITIGATION SECTION	LATITUDE	LONGITUDE
106	VM-24	N 43.055783	W 78.093765
107	VM-24	N 43.055717	W 78.093857
108	VM-24	N 43.055520	W 78.093858
109	VM-24	N 43.055524	W 78.094840
110	VM-24	N 43.055215	W 78.094843

VEGETATIVE BUFFER / SCREEN MITIGATION TABLE			
POINT #	MITIGATION SECTION	LATITUDE	LONGITUDE
111	VM-25	N 43.055128	W 78.094932
112	VM-25	N 43.054832	W 78.095069
113	VM-25	N 43.054229	W 78.095074
114	VM-25	N 43.054221	W 78.093166

VEGETATIVE BUFFER / SCREEN MITIGATION TABLE			
POINT #	MITIGATION SECTION	LATITUDE	LONGITUDE
126	VM-27	N 43.049289	W 78.089943
127	VM-27	N 43.049267	W 78.084949



UNDER NEW YORK STATE EDUCATION LAW ARTICLE 145 (ENGINEERING), SECTION 7209 (2), IT IS A VIOLATION OF THE LAW FOR ANY PERSON, UNLESS ACTING UNDER THE DIRECTION OF A LICENSED PROFESSIONAL ENGINEER, TO ALTER THIS DOCUMENT.

PRELIMINARY
NOT FOR CONSTRUCTION



PREPARED FOR:
NEXTERA ENERGY
700 Universe Blvd,
Juno Beach, FL 33408

TRC 4900 RITTER ROAD
MECHANICSBURG, PA

TRC PROJECT NO: 328807.0000

REV	DESCRIPTION	DATE	DES	CHK	APP

MR DESIGNED
TKM DRAWN
MR CHECKED
MR APPROVED
REVIEW 1
REVIEW 2

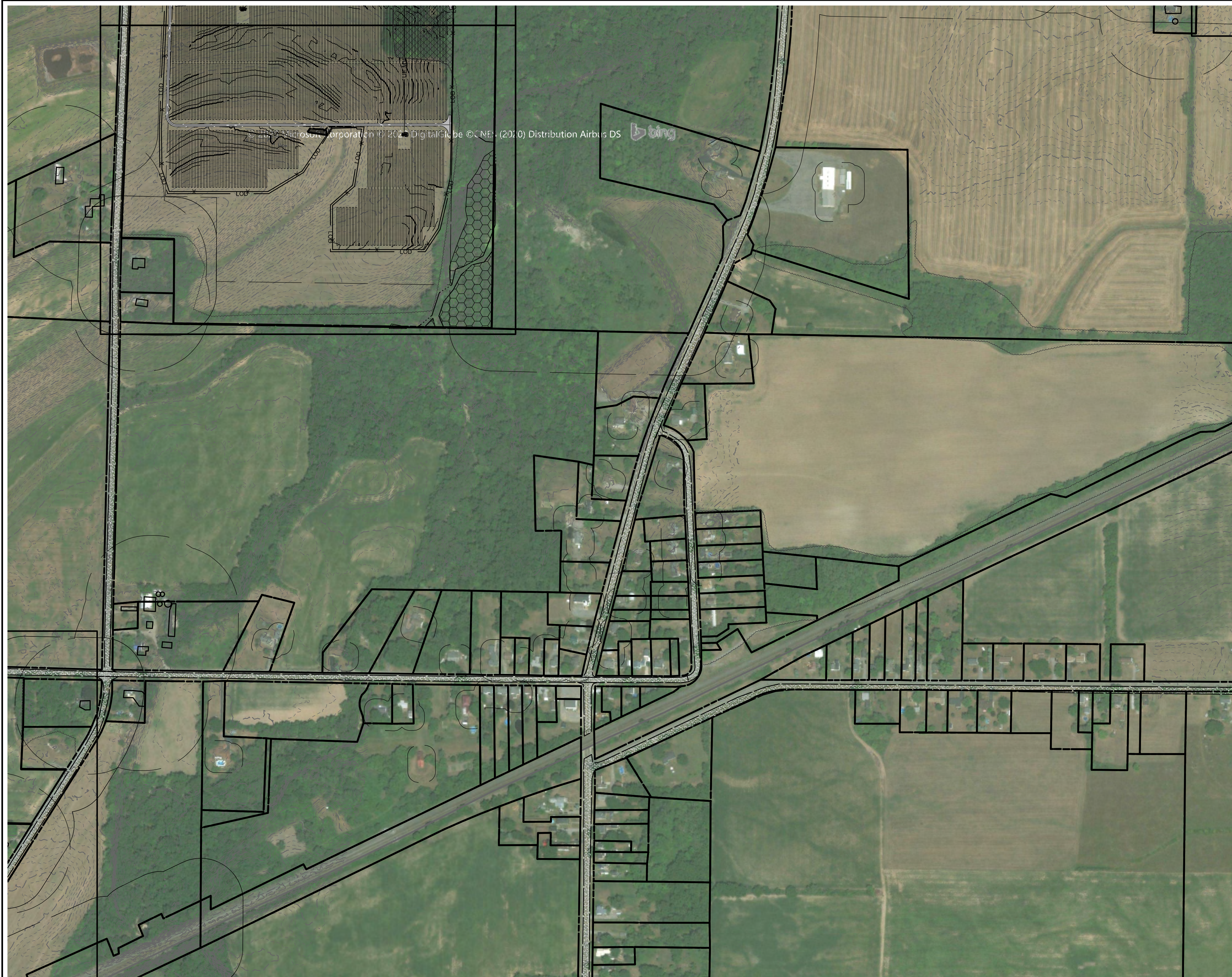
PRELIMINARY
LANDSCAPE PLAN
EXCELSIOR SOLAR ENERGY CENTER, LLC
ENLARGED LANDSCAPE PLAN
TOWN OF BYRON GENESEE COUNTY, NY

08/2020
DATE
AS NOTED
SCALE




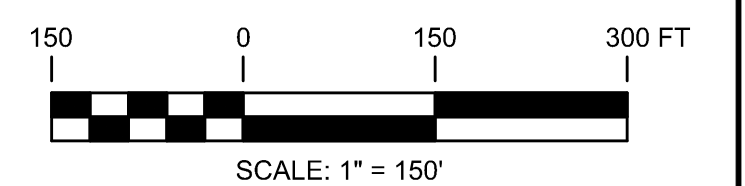
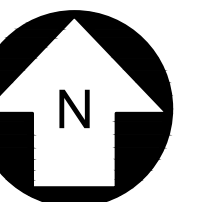
L1.12

REV.
A



LEGEND

-  VISUAL MITIGATION AREA DELINEATION
- TYPE 1 - LIMITED/MINIMUM SCREENING
- TYPE 2 - STANDARD/TYPICAL SCREENING
- TYPE 3 - ROBUST/MAXIMUM SCREENING



UNDER NEW YORK STATE EDUCATION LAW ARTICLE 145 (ENGINEERING), SECTION 7209 (2), IT IS A VIOLATION OF THE LAW FOR ANY PERSON, UNLESS ACTING UNDER THE DIRECTION OF A LICENSED PROFESSIONAL ENGINEER, TO ALTER THIS DOCUMENT.

PRELIMINARY
NOT FOR CONSTRUCTION



PREPARED FOR:



700 Universe Blvd,
Juno Beach, FL 33408



TRC PROJECT NO: 328807.0000

REV	DESCRIPTION	DATE	DES	CHK	APP

MR DESIGNED
TKM DRAWN
MR CHECKED
MR APPROVED
REVIEW 1
REVIEW 2

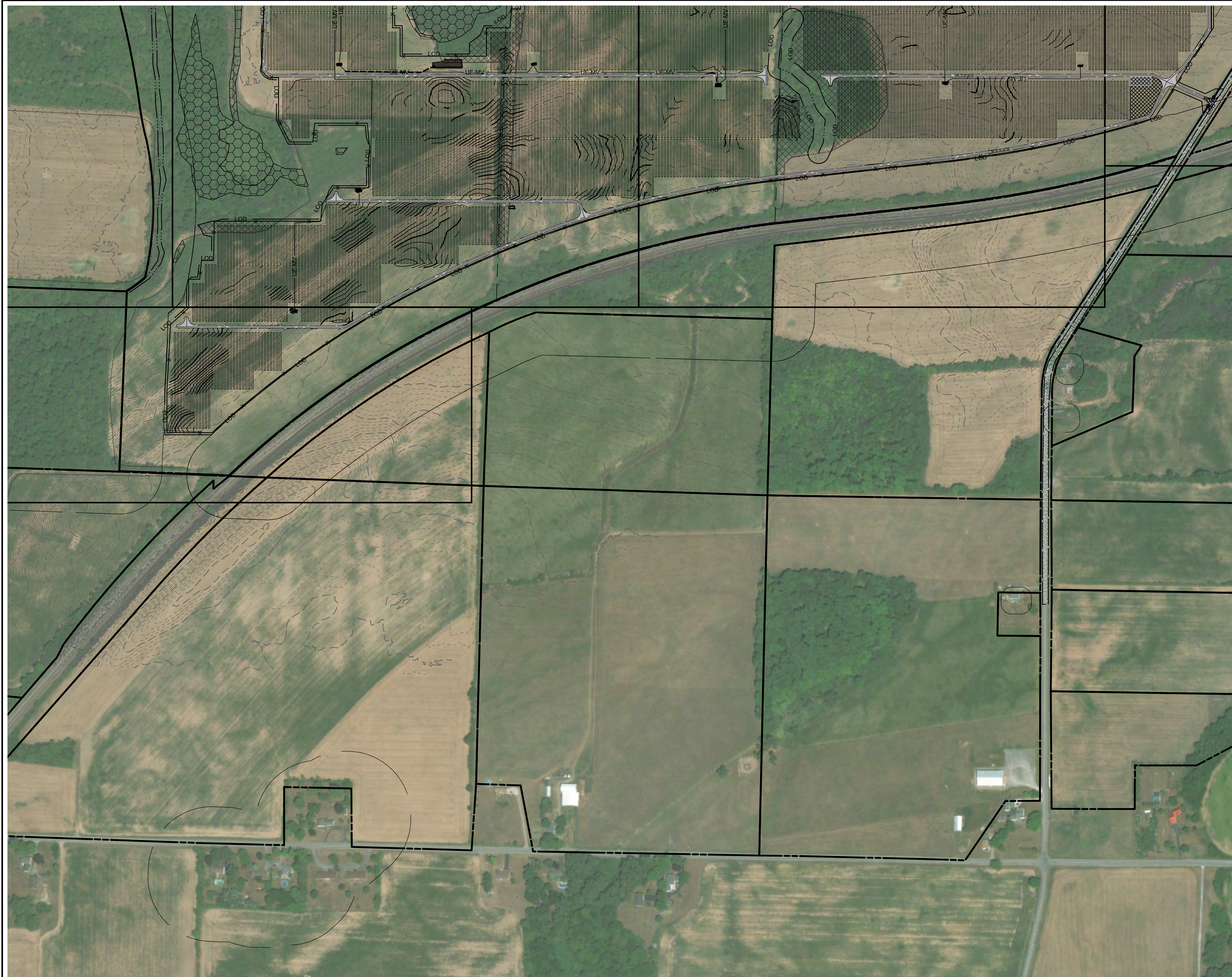
PRELIMINARY
LANDSCAPE PLAN
EXCELSIOR SOLAR ENERGY CENTER, LLC
ENLARGED LANDSCAPE PLAN
TOWN OF BYRON GENESEE COUNTY, NY

08/2020
DATE
AS NOTED
SCALE



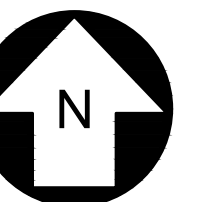
L1.13

REV.
A



LEGEND

- VISUAL MITIGATION AREA DELINEATION
- TYPE 1 - LIMITED/MINIMUM SCREENING
- TYPE 2 - STANDARD/TYPICAL SCREENING
- TYPE 3 - ROBUST/MAXIMUM SCREENING



UNDER NEW YORK STATE EDUCATION LAW ARTICLE 145 (ENGINEERING), SECTION 7209 (2), IT IS A VIOLATION OF THE LAW FOR ANY PERSON, UNLESS ACTING UNDER THE DIRECTION OF A LICENSED PROFESSIONAL ENGINEER, TO ALTER THIS DOCUMENT.

PRELIMINARY
NOT FOR CONSTRUCTION



PREPARED FOR:
NEXTERA ENERGY
700 Universe Blvd,
Juno Beach, FL 33408

TRC 4900 RITTER ROAD
MECHANICSBURG, PA
TRC PROJECT NO: 328807.0000

REV	DESCRIPTION	DATE	DES	CHK	APP

MR DESIGNED
TKM DRAWN
MR CHECKED
MR APPROVED
REVIEW 1
REVIEW 2

PRELIMINARY
LANDSCAPE PLAN
EXCELSIOR SOLAR ENERGY CENTER, LLC
ENLARGED LANDSCAPE PLAN
TOWN OF BYRON GENESEE COUNTY, NY

TRC L1.14 REV. A

08/2020
DATE
AS NOTED
SCALE

GENERAL LANDSCAPE AND SEEDING NOTES

- THE LANDSCAPE PLAN AND DETAILS ARE FOR LANDSCAPING INFORMATION ONLY. PLEASE REFER TO THE SITE LAYOUT PLAN, GRADING PLAN AND/OR UTILITIES PLAN FOR ALL OTHER INFORMATION.
- THE CONTRACTOR SHALL MONITOR AND GUARANTEE THAT ALL PLANTS, TREES, AND SHRUBS SHALL BE HEALTHY AND FREE OF DISEASE FOR A PERIOD OF (1) ONE YEAR AFTER SUBSTANTIAL COMPLETION AND ACCEPTANCE BY THE OWNER. CONTRACTOR SHALL REPLACE ANY DEAD OR UNHEALTHY PLANTS AT CONTRACTOR'S EXPENSE. FINAL ACCEPTANCE SHALL BE MADE IF ALL PLANTS MEET THE GUARANTEE REQUIREMENTS INCLUDING MAINTENANCE. MAINTENANCE RESPONSIBILITIES INCLUDE INVASIVE SPECIES MONITORING, REMOVAL, AND SUPPLEMENTATION. MONITORING OF THE PROJECT SITE SHALL OCCUR IN THE SPRING AND THE FALL TO DETERMINE THE PRESENCE OF INVASIVE SPECIES. SHOULD ANY INVASIVE SPECIES BE IDENTIFIED WITHIN THE PROJECT SITE, THE INVASIVE SPECIES SHALL BE REMOVED ACCORDING TO METHODS MOST LIKELY TO BE EFFECTIVE IN CONTROLLING THAT SPECIES AND SUPPLEMENTING ITS REPLACEMENT WITH APPROPRIATE VEGETATION AND SEED MIX IDENTIFIED (AND APPROVED) ON THIS PLAN AND/OR AN APPROVED EQUAL. ADDITIONAL MAINTENANCE RESPONSIBILITIES INCLUDE: APPROVED CULTIVATING, SPRAYING, WEEDING, WATERING, TIGHTENING OF TREE STRAP GUY, PRUNING, FERTILIZING, MULCHING, AND ANY OTHER OPERATIONS NECESSARY TO MAINTAIN PLANT VIABILITY. MAINTENANCE SHALL BEGIN IMMEDIATELY AFTER PLANTING AND CONTINUE UNTIL 90 DAYS AFTER FINAL ACCEPTANCE.
- THE CONTRACTOR SHALL SUPPLY ALL LABOR, PLANTS, APPROVED SEEDING MIX, AND MATERIALS IN QUANTITIES SUFFICIENT TO COMPLETE THE WORK SHOWN ON THE DRAWING(S) AND LISTED IN THE PLANT SCHEDULE(S) AND/OR SEEDING TABLE(S). IN THE EVENT OF A DISCREPANCY BETWEEN QUANTITIES SHOWN IN THE PLANT SCHEDULE AND/OR SEEDING TABLE AND THOSE REQUIRED BY THE DRAWINGS, THE LARGER SHALL APPLY. ALL PLANTS SHALL BE ACCLIMATED BY THE SUPPLY NURSERY TO THE LOCAL HARDNESS ZONE AND BE CERTIFIED THAT THE PLANTING MATERIAL HAS BEEN GROWN FOR A MINIMUM OF (2) TWO YEARS AT THE SOURCE AND OBTAINED WITHIN 200 MILES OF PROJECT SITE UNLESS OTHERWISE APPROVED BY OWNER, CERTIFIED LANDSCAPE INSPECTOR, OR LANDSCAPE ARCHITECT.
- THE LOCATIONS FOR PLANT MATERIAL ARE APPROXIMATE AND ARE SUBJECT TO FIELD ADJUSTMENT DUE TO SLOPE, VEGETATION, AND SITE FACTORS SUCH AS THE LOCATION OF ROCK OUTCROPS. PRIOR TO PLANTING THE CONTRACTOR SHALL ACCURATELY STAKE OUT THE LOCATIONS FOR ALL PLANTS. THE OWNER, CERTIFIED LANDSCAPE INSPECTOR, OR LANDSCAPE ARCHITECT SHALL APPROVE THE FIELD LOCATIONS OR ADJUSTMENTS OF THE PLANT MATERIAL.
- ALL SHRUB MASSING SHALL BE MULCHED TO A DEPTH OF 2" AND SHREDDED HARDWOOD BARK MULCH SHALL BE USED FOR SHRUB MASSING AREAS.
- NO PLANT SHALL BE PLACED IN THE GROUND BEFORE ROUGH GRADING HAS BEEN COMPLETED AND APPROVED BY THE OWNER, CERTIFIED LANDSCAPE INSPECTOR, OR LANDSCAPE CONTRACTOR. STAKING THE LOCATION OF ALL TREES AND SHRUBS SHALL BE COMPLETED PRIOR TO PLANTING FOR APPROVAL BY THE OWNER, CERTIFIED LANDSCAPE INSPECTOR, OR LANDSCAPE ARCHITECT. STAKING OF THE INSTALLED TREE MUST BE COMPLETED THE SAME DAY AS IT IS INSTALLED. ALL TREES SHALL BE STAKED OR GUYED AS PER THE DETAIL. SEE LANDSCAPING PLAN(S) FOR PLANTING DETAILS.
- COORDINATE PLANT MATERIAL LOCATION WITH SITE UTILITIES. SEE SITE LAYOUT, GRADING AND/OR UTILITY PLANS FOR STORM, SANITARY, GAS, ELECTRIC, TELEPHONE AND WATER LINES. UTILITY LOCATIONS ARE APPROXIMATE. EXERCISE CARE WHEN DIGGING IN AREAS OF POTENTIAL CONFLICT WITH UNDERGROUND OR OVERHEAD UTILITIES. THE CONTRACTOR IS RESPONSIBLE FOR ANY DAMAGE DUE TO CONTRACTOR'S NEGLIGENCE AND SHALL REPAIR OR REPLACE ANY DAMAGE AT CONTRACTOR'S EXPENSE.
- LANDSCAPE PLANTING PITS MUST BE FREE DRAINING, PAVEMENT, COMPACTED SUBGRADE, AND BLASTED ROCK SHALL BE REMOVED TO A DEPTH OF 2' OR TO A GREATER DEPTH IF REQUIRED BY PLANTING DETAILS OR SPECIFICATIONS. REPLACE SOIL WITH MODERATELY COMPACTED LOAM OR SANDY LOAM FREE FROM STONES AND RUBBISH 1" OR GREATER IN DIAMETER AND ANY OTHER MATERIAL HARMFUL TO PLANT GROWTH AND DEVELOPMENT. PLANTING INSTALLATION SHALL BE AS DETAILED AND CONTAIN PLANTING MIX AS SPECIFIED UNLESS RECOMMENDED OTHERWISE BY SOIL ANALYSIS.

PLANTING SOIL MIXTURE:
 2 PARTS PEAT MOSS
 5 PARTS TOPSOIL
 MYCORHIZA INOCULANT - "TRANSPLANT 1-STEP" AS MANUFACTURED BY ROOTS, INC. OR APPROVED EQUAL. USE PER MANUFACTURER'S RECOMMENDATIONS FOR TREES AND SHRUBS. FERTILIZER/LIME APPLY AS RECOMMENDED BY SOIL ANALYSIS

- TREES, AND SHRUBS: TREES AND SHRUBS SHALL BE NURSERY GROWN UNLESS OTHERWISE NOTED AND HARDY UNDER CLIMATIC CONDITIONS SIMILAR TO THOSE IN THE LOCATION OF THE PROJECT. THEY SHALL BE TYPICAL OF THEIR SPECIES OR VARIETY WITH NORMAL HABIT OF GROWTH. THEY SHALL BE SOUND, HEALTHY, VIGOROUS, WELL-BRANCHED AND DENSELY FOLIATED WHEN IN LEAF. THEY SHALL BE FREE OF DISEASE, INSECT PESTS, EGGS OR LARVAE. THEY SHALL HAVE HEALTHY AND WELL-DEVELOPED ROOT SYSTEMS. ALL TREES SHALL HAVE STRAIGHT SINGLE TRUNKS WITH THEIR MAIN LEADER INTACT UNLESS OTHERWISE STATED. THE OWNER, CERTIFIED LANDSCAPE INSPECTOR OR LANDSCAPE ARCHITECT SHALL ONLY PERMIT SUBSTITUTIONS UPON WRITTEN APPROVAL. THEIR SIZES SHALL CONFORM TO THE MEASUREMENT SPECIFIED ON THE DRAWINGS. PLANTS LARGER THAN SPECIFIED ON THE DRAWINGS MAY BE USED IF APPROVED. THE USE OF SUCH PLANTS SHALL NOT INCREASE THE CONTRACT PRICE. ALL TREES AND SHRUBS SHALL BE MULCHED IN ACCORDANCE WITH THE RESPECTIVE PLANTING DETAIL(S) PROVIDED IN THE LANDSCAPING PLAN.

- ALL PRUNING SHALL CONFORM TO THE TREE CARE INDUSTRY ASSOCIATION (TCIA) ANSI A300 (PART 1) - 2017 PRUNING STANDARDS. PRUNING STANDARDS SHALL RECOGNIZE BUT, ARE NOT LIMITED TO, THE FOLLOWING PRUNING OBJECTIVES: MANAGE RISK, MANAGE HEALTH, DEVELOP STRUCTURE, PROVIDE CLEARANCE, MANAGE SIZE OR SHAPE, IMPROVE AESTHETICS, MANAGE PRODUCTION OF FRUIT, FLOWERS, OR OTHER PRODUCTS, AND/OR MANAGE WILDLIFE HABITAT. DEVELOPING STRUCTURE SHALL IMPROVE BRANCH AND TRUNK ARCHITECTURE, PROMOTE OR SUBORDINATE CERTAIN LEADERS, STEMS, OR BRANCHES; PROMOTE DESIRABLE BRANCH SPACING; PROMOTE OR DISCOURAGE GROWTH IN A PARTICULAR DIRECTION (DIRECTIONAL PRUNING); MINIMIZE FUTURE INTERFERENCE WITH TRAFFIC, LINES OF SIGHT, INFRASTRUCTURE, OR OTHER PLANTS; RESTORE PLANTS FOLLOWING DAMAGE; AND/OR REJUVENATE SHRUBS. PROVIDING CLEARANCE SHALL ENSURE SAFE AND RELIABLE UTILITY SERVICES; MINIMIZE CURRENT INTERFERENCE WITH TRAFFIC, LINES OF SITE, INFRASTRUCTURE, OR OTHER PLANTS; RAISE CROWN(S) FOR MOVEMENT OF TRAFFIC OR LIGHT PENETRATION; ENSURE LINES OF SIGHT OR DESIRED VIEWS; PROVIDE ACCESS TO SITES, BUILDINGS, OR OTHER STRUCTURES; AND/OR COMPLY WITH REGULATIONS.

- TOPSOIL SHALL BE INSTALLED AT A MINIMUM DEPTH OF 4 INCHES. CONTRACTOR SHALL SUBMIT TOPSOIL TO A CERTIFIED TESTING LABORATORY TO DETERMINE PH, FERTILITY, ORGANIC CONTENT AND MECHANICAL COMPOSITION. THE CONTRACTOR SHALL SUBMIT THE TEST RESULTS FROM REGIONAL EXTENSION OFFICE OF USDA TO THE OWNER, CERTIFIED LANDSCAPE INSPECTOR, OR LANDSCAPE ARCHITECT FOR REVIEW AND APPROVAL. CONTRACTOR SHALL INCORPORATE AMENDMENTS FOR GOOD PLANT GROWTH AND PROPER SOIL ACIDITY RECOMMENDED FROM THE TOPSOIL TEST.

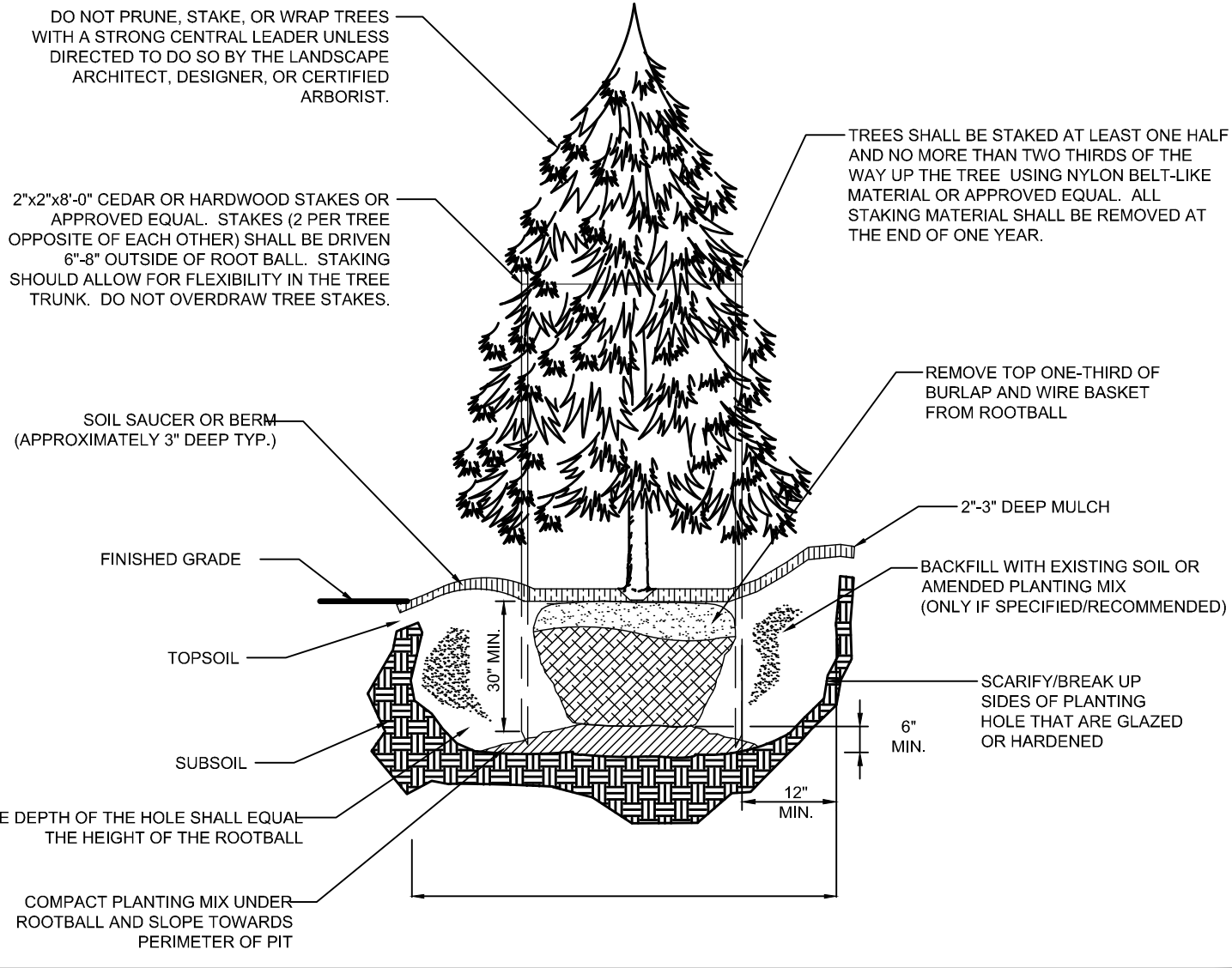
- NO PHOSPHOROUS SHALL BE USED AT PLANTING TIME UNLESS SOIL TESTING HAS BEEN COMPLETED AND TESTED BY A HORTICULTURAL TESTING LAB AND SOIL TESTS SPECIFICALLY INDICATE A PHOSPHOROUS DEFICIENCY THAT IS HARMFUL OR WILL PREVENT NEW LAWNS/GRASSES AND PLANTINGS FROM ESTABLISHING PROPERLY.

- IF SOIL TESTS INDICATE A PHOSPHOROUS DEFICIENCY THAT WILL IMPACT PLANT AND LAWN ESTABLISHMENT, PHOSPHOROUS SHALL BE APPLIED AT THE MINIMUM RECOMMENDED LEVEL PRESCRIBED IN THE SOIL TEST FOLLOWING ALL APPLICABLE STANDARDS, REQUIREMENTS, AND/OR REGULATIONS.

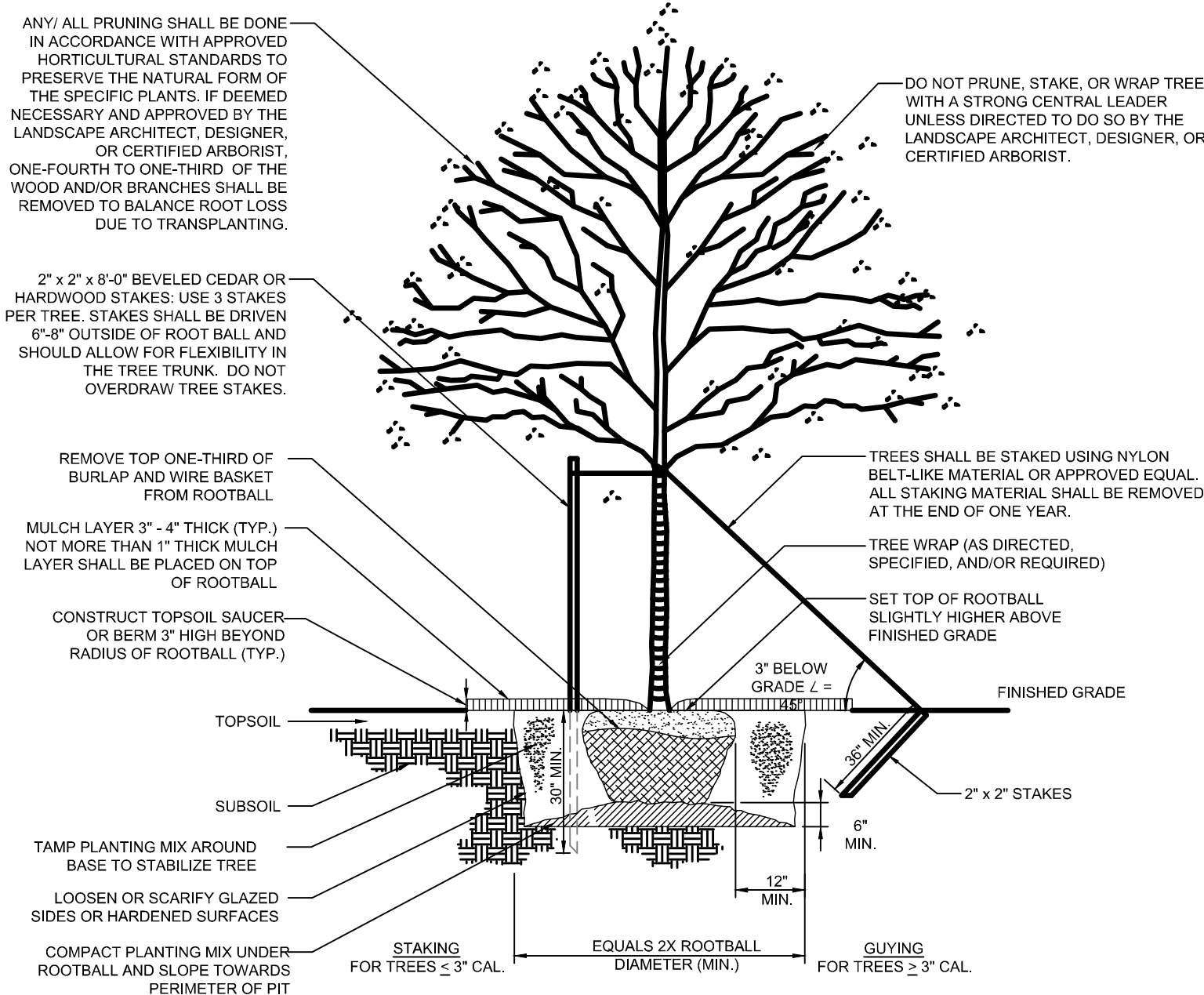
- ALL SLOPES GREATER THAN 3:1 RECEIVING A WILDFLOWER, WETLAND, AND/OR GRASS SEEDING MIXTURE SHALL BE COVERED WITH AN EROSION CONTROL BLANKET.

- ALL WILDFLOWERS AND GRASSES SOWN SHALL BE ALLOWED TO GROW TO THEIR NATURALLY OCCURRING HEIGHTS WHENEVER POSSIBLE. NATIVE WILDFLOWERS AND/OR GRASSES CAN BE MOVED/MAINTAINED (WITHIN ACCEPTABLE AREAS IDENTIFIED AND/OR APPROVED BY APPROPRIATE REGULATORY AGENCIES) AS OFTEN AS NEEDED TO KEEP THE VEGETATION AT A DESIRED AND/OR MANAGEABLE/MANICURED HEIGHT.

UNDER NEW YORK STATE EDUCATION LAW ARTICLE 145 (ENGINEERING), SECTION 7209 (2), IT IS A VIOLATION OF THE LAW FOR ANY PERSON, UNLESS ACTING UNDER THE DIRECTION OF A LICENSED PROFESSIONAL ENGINEER, TO ALTER THIS DOCUMENT.



EVERGREEN TREE PLANTING DETAIL
N.T.S.



NATIVE/DECIDUOUS TREE PLANTING DETAIL
N.T.S.

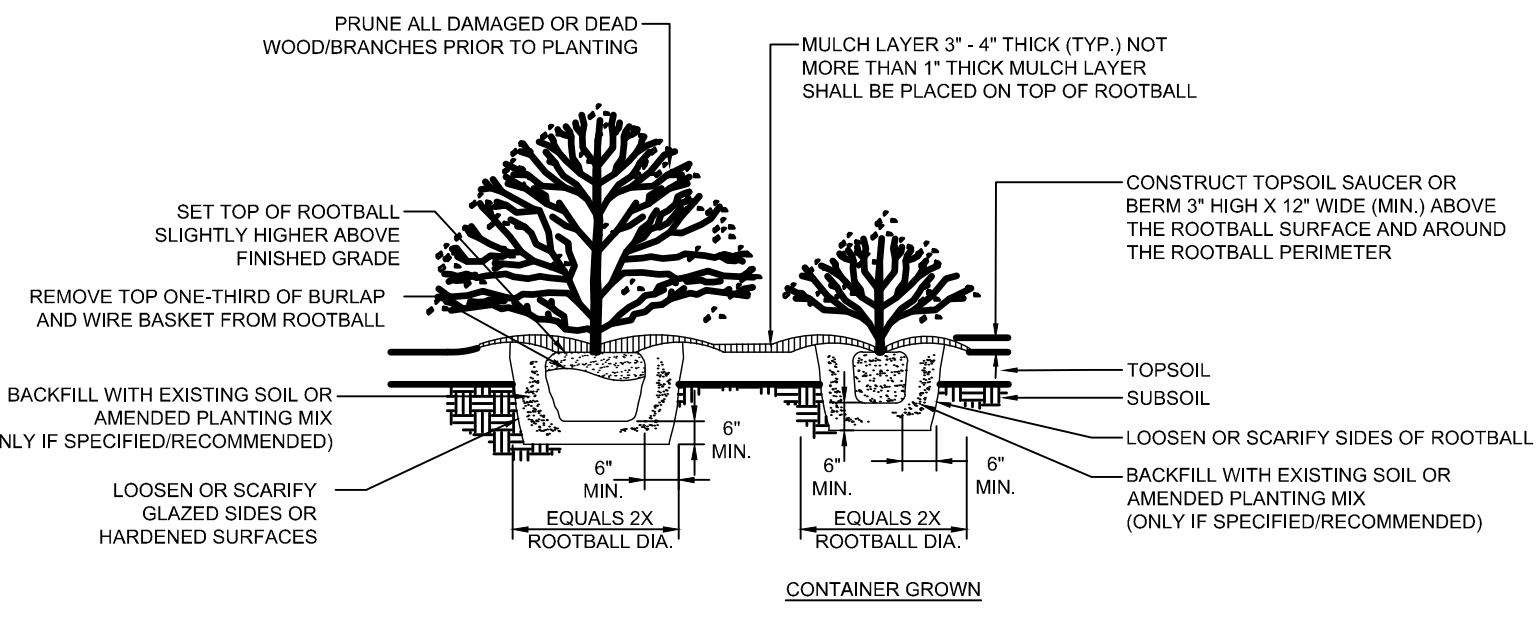
LEGEND - OVERALL PLANTING TOTALS

LANDSCAPE PLANTING SCHEDULE VISUAL MITIGATION PLANTING TEMPLATE TYPES 1, 2 & 3

DECIDUOUS AND EVERGREEN TREES					
SYMBOL	BOTANICAL NAME/ COMMON PLANT NAME	QUANTITY	SIZE	ROOT	MATURE HEIGHT
AA	AMELANCHIER ARBOREA DOWNY SHADBUSH	406	6'-8' HT. CLUMP	B&B	15'-20' HT.
CF	CORNUS FLORIDA FLOWERING DOGWOOD	358	2" CAL. MIN.	B&B	15'-25' HT.
JV	JUNPERUS VIRGINIANA EASTERN RED CEDAR	1,445	5'-6' HT.	B&B	40'-50' HT.
PG	PICEA GLAUCA WHITE SPRUCE	831	5'-6' HT.	B&B	40'-60' HT.
PP	PICEA PUNGENS BLUE SPRUCE	727	2" CAL. MIN.	B&B	50'-70' HT.

SHRUBS

SYMBOL	BOTANICAL NAME/ COMMON PLANT NAME	QUANTITY	SIZE	ROOT	MATURE HEIGHT
AR	ARONIA ARBUTIFOLIA RED CHOKEBERRY	490	24"-30" HT.	#3/5 CONT.	7'-10' HT.
CS	CORNUS SERICEA RED TWIG DOGWOOD	857	24"-30" HT.	#3/5 CONT.	7'-9' HT.
HV	HAMAMELIS VIRGINIANA COMMON WITCH HAZEL	574	3'-4' HT.	B&B	15'-25' HT.
VC	VACCINIUM CORYMBOSUM HIGHBUSH BLUEBERRY	667	24"-30" HT.	#3/5 CONT.	6'-12' HT.
VL	VIBURNUM LENTAGO NANNYBERRY	570	24"-30" HT.	#3/5 CONT.	15'-20' HT.
VT	VIBURNUM TRILOBUM AMERICAN CRANBERRY	807	24"-30" HT.	#3/5 CONT.	8'-10' HT.



SHRUB PLANTING DETAIL
N.T.S.

SOLAR FARM GRASS SEED MIXES

NATIVE/NATURALIZED SOLAR FARM SEED MIX				
BOTANICAL NAME	COMMON NAME	MIX CONCENTRATION	RATE (LBS/ACRE)	RATE (LBS/1000 FT ²)
FESTUCA RUBRA	CREeping RED FESCUE	34%	262	6
FESTUCA OVINA	SHEEP FESCUE	33%		
FESTUCA BREVIPILA 'BEACON'	HARD FESCUE 'BEACON'	10%		
FESTUCA OVINA VAR. 'RHINO'	HARD FESCUE 'RHINO'	5%		
FESTUCA OVINA VAR. GLAUCA (F. ARVERNENSIS) (F. GLAUCA), 'BLUE RAY'	BLUE FESCUE 'BLUE RAY'	5%		
POA PRATENSIS 'ARGYLE'	KENTUCKY BLUEGRASS 'ARGYLE'	5%		
POA PRATENSIS 'SHAMROCK'	KENTUCKY BLUEGRASS 'SHAMROCK'	5%		
AGROSTIS PERENNANS, ALBANY PINE BUSH-NY ECOTYPE	AUTUMN BENTGRASS, ALBANY PINE BUSH-NY ECOTYPE	3%		

NOTE:

GRASS SEED MIXES ARE COMPRISED OF GRASSES THAT ARE NATIVE AND/OR INDIGENOUS TO THE AREA AND/OR CONSIDERED FAVORABLE FOR WILDLIFE HABITAT AND SUSTAINABLE GROWTH. ADDITIONALLY, THE SOLAR FARM SEED MIX WAS DEVELOPED ESPECIALLY FOR NATIVE GRASS PLANTINGS AROUND SOLAR ARRAY FIELDS AND SHALL BE UTILIZED ACCORDINGLY. THESE GRASSES WILL MATURE OUT TO A HEIGHT OF APPROXIMATELY 2 TO 2 1/2 FEET HIGH.

FLOWERING HERBACEOUS LAYER/NORTHEAST NATIVE POLLINATOR SEED MIXES

NORTHEAST NATIVE WILDFLOWER & GRASS MIX				
BOTANICAL NAME	COMMON NAME	MIX CONCENTRATION	RATE (LBS/ACRE)	RATE (LBS/1000 FT ²)
SCHIZACHYRIUM SCOPARIUM	LITTLE BLUESTEM	40%	20	0.46
BOUTELOUA CURTIPENDULA	SIDEOTS GRAMA	23.40%		
COSMOS BIPINNATUS	COSMOS	7.30%		
COREOPSIS LANCEOLATA	LANCELEAF COREOPSIS	3.50%		
ECHINACEA PURPUREA	PURPLE CONEFLOWER	3.50%		
ELYMUS VIRGINICUS	VIRGINIA WILDRYE	3%		
SORGHASTRUM NUTANS	INDIANGRASS	2.50%		
LUPINUS POLYPHYLLUS	BIGLEAF LUPINE	2.20%		
CHAMAECRISTA FASCICULATA	PARTIRIDGE PEA	2%		
DELPHINIUM AJACIS	ROCKET LARKSPUR	2%		
RUDBECKIA HIRTA	BLACKEYED SUSAN	2%		
GAILLARDIA ARISTATA	BLANKET FLOWER	1.50%		
SENNA HEBECARPA	WILD SENNA	1%		
PENSTEMON DIGITALIS	TALL WHITE BEARDTONGUE	1%		
PAPAVER RHOEAS	SHIRLEY MIX (CORN POPPY, SHIRLEY MIX)	0.60%		
ANDROPOGON GERARDII	BIG BLUESTEM	0.50%		
ELYMUS CANADENSIS	CANADA WILDRYE	0.50%		
COREOPSIS TRICTORIA	PLAIN COREOPSIS	0.50%		
LITRIS SPICATA	BLAZING STAR	0.40%		
ASCLEPIAS SYRIACA	COMMON MILKWEED	0.40%		
ASCLEPIAS TUBEROSA	BUTTERFLY MILKWEED	0.40%		
ZIZIA AUREA	GOLDEN ALEXANDERS	0.30%		
ASCLEPIAS INCARNATA	SWAMP MILKWEED	0.30%		
MONARDA FISTULOSA	WILD BERGAMONT	0.20%		
PENSTEMON LAEVIGATUS	APPALACHIAN BEARDTONGUE	0.20%		
SENNA MARILANDICA	MARYLAND SENNA	0.20%		
SOLIDAGO NEMORALIS	GRAY GOLDENROD	0.10%		
TRADESCANTIA OHIENSIS	OHIO SPIDERWORT	0.10%		
ASTER LAEVIS	SMOOTH BLUE ASTER	0.10%		
ASTER NOVAE-ANGIAE	NEW ENGLAND ASTER	0.10%		
ASTER PRENANTHOIDES	ZIGZAG ASTER	0.10%		
HELIOPSIS HELIANTHOIDES	OXEYE SUNFLOWER	0.10%		

NOTE:

NATIVE POLLINATOR SEED MIXES ARE INTENDED TO PROVIDE AN EXCELLENT WILDLIFE FOOD AND SHELTER THAT WILL ATTRACT A VARIETY OF POLLINATORS AND SONGBIRDS. THE NATIVE WILDFLOWERS AND GRASSES IN THIS MIX PROVIDE AN ATTRACTIVE DISPLAY OF COLOR FROM SPRING TO FALL. POLLINATOR SEED MIXES ARE INTENDED TO PROVIDE NECTAR AND FOOD SOURCES FOR A VARIETY OF POLLINATORS AND LARVA. THESE MIXES ARE COMPRISED OF A FAIRLY EVEN MIX OF NATIVE AND/OR INDIGENOUS WILDFLOWERS AND GRASSES. THE POLLINATOR SEED MIX IS INTENDED TO BE SOWN IN THE DESIGNATED 10 FOOT WIDE AREA OUTSIDE OF THE SOLAR ARRAY FIELD AND AROUND THE OUTER PERIMETER OF THE VEGETATIVE PLANTING BUFFER. SEE SHEET C-601

PRELIMINARY
NOT FOR CONSTRUCTION

PREPARED FOR:

700 Universe Blvd.
Juno Beach, FL 33408

4900 RITTER ROAD
MECHANICSBURG, PA

TRC PROJECT NO: 276517.4552

REV	DESCRIPTION	DATE	DES	CHK	APP

MR DESIGNED

TKM DRAWN

MR CHECKED

MR APPROVED

PRELIMINARY
LANDSCAPE PLAN
EXCELSIOR SOLAR ENERGY CENTER, LLC
LANDSCAPE NOTES & DETAILS
TOWN OF BYRON GENESEE COUNTY, NY

REVIEW 1

08/2020 DATE

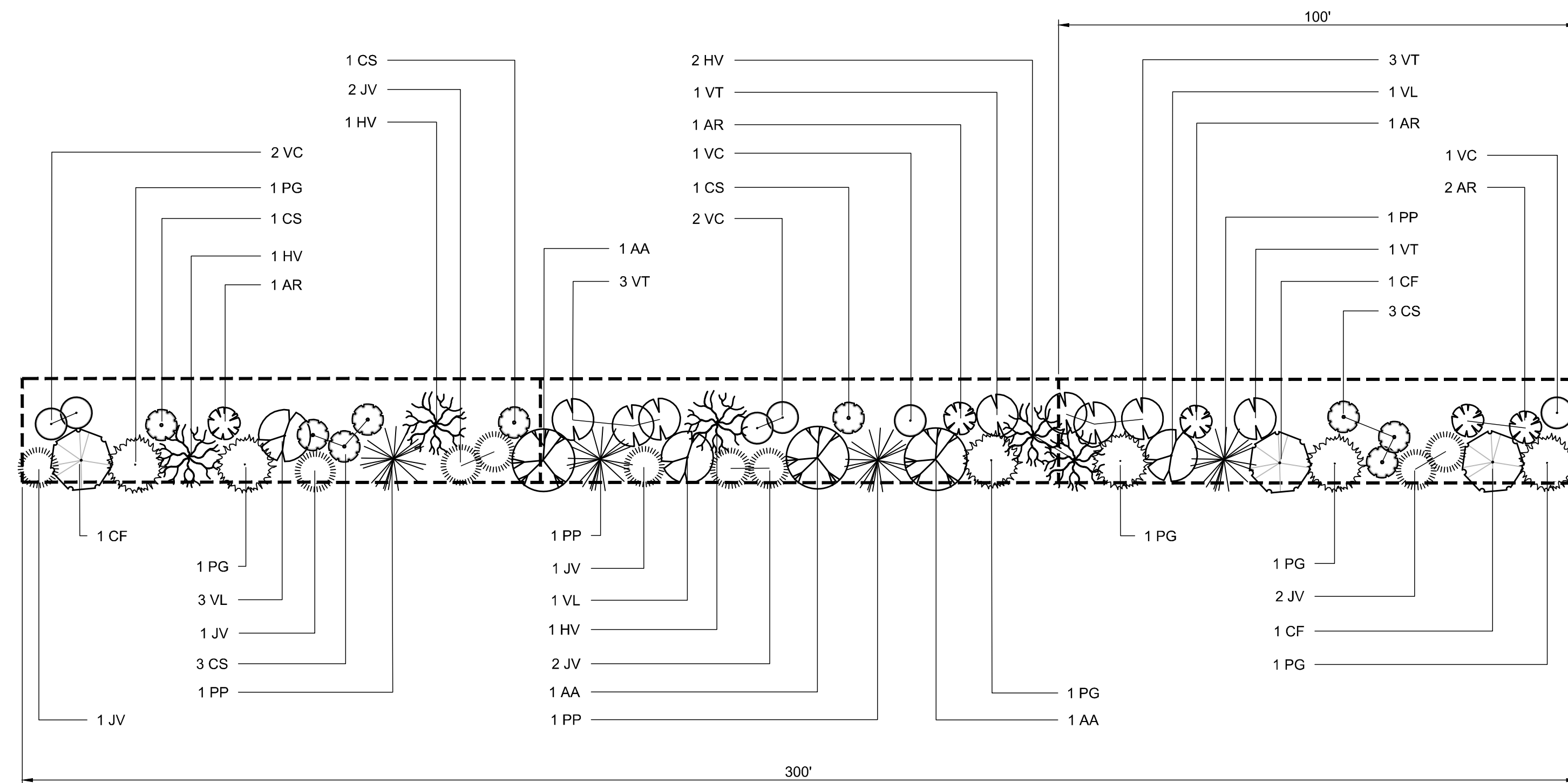
AS NOTED SCALE

L2.01

REVIEW 2

REVISION

A



PLANTING TEMPLATE TYPE 1

LEGEND

VISUAL MITIGATION PLANTING TEMPLATE - TYPE 1
LANDSCAPE PLANTING SCHEDULE (MINIMUM VISUAL BUFFER/SCREENING EFFORT)

DECIDUOUS AND EVERGREEN TREES

SYMBOL	BOTANICAL NAME/ COMMON PLANT NAME	QUANTITY	SIZE	ROOT	MATURE HEIGHT
AA	AMELANCHIER ARBOREA DOWNY SHADBUSH	3	6'-8' HT. CLUMP	B&B	15'-20' HT.
CF	CORNUS FLORIDA FLOWERING DOGWOOD	3	2" CAL. MIN.	B&B	15'-25' HT.
JV	JUNIPERUS VIRGINIANA EASTERN RED CEDAR	9	5'-6' HT.	B&B	40'-50' HT.
PG	PICEA GLAUCA WHITE SPRUCE	6	5'-6' HT.	B&B	40'-60' HT.
PP	PICEA PUNGENS BLUE SPRUCE	4	2" CAL. MIN.	B&B	50'-70' HT.

SHRUBS

SYMBOL	BOTANICAL NAME/ COMMON PLANT NAME	QUANTITY	SIZE	ROOT	MATURE HEIGHT
AR	ARONIA ARBUTIFOLIA RED CHOKEBERRY	5	24"-30" HT.	#3/5 CONT.	7'-10' HT.
CS	CORNUS SERICEA RED TWIG DOGWOOD	9	24"-30" HT.	#3/5 CONT.	7'-9' HT.
HV	HAMAMELIS VIRGINIANA COMMON WITCH HAZEL	5	3'-4' HT.	B&B	15'-25' HT.
VC	VACCINIUM CORYMBOSUM HIGHBUSH BLUEBERRY	6	24"-30" HT.	#3/5 CONT.	6'-12' HT.
VL	VIBURNUM LENTAGO NANNYBERRY	5	24"-30" HT.	#3/5 CONT.	15'-20' HT.
VT	VIBURNUM TRILOBUM AMERICAN CRANBERRY	8	24"-30" HT.	#3/5 CONT.	8'-10' HT.

LEGEND - VM10

LANDSCAPE PLANTING SCHEDULE

PLANTING TEMPLATE TYPE 1
TOTAL MITIGATION LENGTH = 690 LF

DECIDUOUS AND EVERGREEN TREES

SYMBOL	BOTANICAL NAME/ COMMON PLANT NAME	QUANTITY	SIZE	ROOT	MATURE HEIGHT
AA	AMELANCHIER ARBOREA DOWNY SHADBUSH	6	6'-8' HT. CLUMP	B&B	15'-20' HT.
CF	CORNUS FLORIDA FLOWERING DOGWOOD	7	2" CAL. MIN.	B&B	15'-25' HT.
JV	JUNIPERUS VIRGINIANA EASTERN RED CEDAR	21	5'-6' HT.	B&B	40'-50' HT.
PG	PICEA GLAUCA WHITE SPRUCE	14	5'-6' HT.	B&B	40'-60' HT.
PP	PICEA PUNGENS BLUE SPRUCE	9	2" CAL. MIN.	B&B	50'-70' HT.

SHRUBS

SYMBOL	BOTANICAL NAME/ COMMON PLANT NAME	QUANTITY	SIZE	ROOT	MATURE HEIGHT
AR	ARONIA ARBUTIFOLIA RED CHOKEBERRY	11	24"-30" HT.	#3/5 CONT.	7'-10' HT.
CS	CORNUS SERICEA RED TWIG DOGWOOD	22	24"-30" HT.	#3/5 CONT.	7'-9' HT.
HV	HAMAMELIS VIRGINIANA COMMON WITCH HAZEL	12	3'-4' HT.	B&B	15'-25' HT.
VC	VACCINIUM CORYMBOSUM HIGHBUSH BLUEBERRY	14	24"-30" HT.	#3/5 CONT.	6'-12' HT.
VL	VIBURNUM LENTAGO NANNYBERRY	13	24"-30" HT.	#3/5 CONT.	15'-20' HT.
VT	VIBURNUM TRILOBUM AMERICAN CRANBERRY	16	24"-30" HT.	#3/5 CONT.	8'-10' HT.

LEGEND - VM16

LANDSCAPE PLANTING SCHEDULE

PLANTING TEMPLATE TYPE 1
TOTAL MITIGATION LENGTH = 2,105 LF

DECIDUOUS AND EVERGREEN TREES

SYMBOL	BOTANICAL NAME/ COMMON PLANT NAME	QUANTITY	SIZE	ROOT	MATURE HEIGHT
AA	AMELANCHIER ARBOREA DOWNY SHADBUSH	21	6'-8' HT. CLUMP	B&B	15'-20' HT.
CF	CORNUS FLORIDA FLOWERING DOGWOOD	21	2" CAL. MIN.	B&B	15'-25' HT.
JV	JUNIPERUS VIRGINIANA EASTERN RED CEDAR	64	5'-6' HT.	B&B	40'-50' HT.
PG	PICEA GLAUCA WHITE SPRUCE	42	5'-6' HT.	B&B	40'-60' HT.
PP	PICEA PUNGENS BLUE SPRUCE	28	2" CAL. MIN.	B&B	50'-70' HT.

SHRUBS

SYMBOL	BOTANICAL NAME/ COMMON PLANT NAME	QUANTITY	SIZE	ROOT	MATURE HEIGHT
AR	ARONIA ARBUTIFOLIA RED CHOKEBERRY	35	24"-30" HT.	#3/5 CONT.	7'-10' HT.
CS	CORNUS SERICEA RED TWIG DOGWOOD	63	24"-30" HT.	#3/5 CONT.	7'-9' HT.
HV	HAMAMELIS VIRGINIANA COMMON WITCH HAZEL	35	3'-4' HT.	B&B	15'-25' HT.
VC	VACCINIUM CORYMBOSUM HIGHBUSH BLUEBERRY	42	24"-30" HT.	#3/5 CONT.	6'-12' HT.
VL	VIBURNUM LENTAGO NANNYBERRY	35	24"-30" HT.	#3/5 CONT.	15'-20' HT.
VT	VIBURNUM TRILOBUM AMERICAN CRANBERRY	56	24"-30" HT.	#3/5 CONT.	8'-10' HT.

LEGEND - VM17

LANDSCAPE PLANTING SCHEDULE

PLANTING TEMPLATE TYPE 1
TOTAL MITIGATION LENGTH = 655 LF

DECIDUOUS AND EVERGREEN TREES

SYMBOL	BOTANICAL NAME/ COMMON PLANT NAME	QUANTITY	SIZE	ROOT	MATURE HEIGHT
AA	AMELANCHIER ARBOREA DOWNY SHADBUSH	6	6'-8' HT. CLUMP	B&B	15'-20' HT.
CF	CORNUS FLORIDA FLOWERING DOGWOOD	7	2" CAL. MIN.	B&B	15'-25' HT.
JV	JUNIPERUS VIRGINIANA EASTERN RED CEDAR	19	5'-6' HT.	B&B	40'-50' HT.
PG	PICEA GLAUCA WHITE SPRUCE	14	5'-6' HT.	B&B	40'-60' HT.
PP	PICEA PUNGENS BLUE SPRUCE	8	2" CAL. MIN.	B&B	50'-70' HT.

SHRUBS

SYMBOL	BOTANICAL NAME/ COMMON PLANT NAME	QUANTITY	SIZE	ROOT	MATURE HEIGHT
AR	ARONIA ARBUTIFOLIA RED CHOKEBERRY	11	24"-30" HT.	#3/5 CONT.	7'-10' HT.
CS	CORNUS SERICEA RED TWIG DOGWOOD	19	24"-30" HT.	#3/5 CONT.	7'-9' HT.
HV	HAMAMELIS VIRGINIANA COMMON WITCH HAZEL	11	3'-4' HT.	B&B	15'-25' HT.
VC	VACCINIUM CORYMBOSUM HIGHBUSH BLUEBERRY	14	24"-30" HT.	#3/5 CONT.	6'-12' HT.
VL	VIBURNUM LENTAGO NANNYBERRY	11	24"-30" HT.	#3/5 CONT.	15'-20' HT.
VT	VIBURNUM TRILOBUM AMERICAN CRANBERRY	16	24"-30" HT.	#3/5 CONT.	8'-10' HT.

UNDER NEW YORK STATE EDUCATION LAW ARTICLE 145 (ENGINEERING), SECTION 7209 (2), IT IS A VIOLATION OF THE LAW FOR ANY PERSON, UNLESS ACTING UNDER THE DIRECTION OF A LICENSED PROFESSIONAL ENGINEER, TO ALTER THIS DOCUMENT.

PRELIMINARY
NOT FOR CONSTRUCTION



PREPARED FOR:

700 Universe Blvd.
Juno Beach, FL 33408

TRC 4900 RITTER ROAD
MECHANICSBURG, PA

TRC PROJECT NO: 276517.4552

REV	DESCRIPTION	DATE	DES	CHK	APP

PRELIMINARY
LANDSCAPE PLAN
EXCELSIOR SOLAR ENERGY CENTER, LLC
LANDSCAPE MITIGATION TYPE 1 TEMPLATE & SCHEDULES
TOWN OF BYRON GENESEE COUNTY, NY

MR DESIGNED
TKM DRAWN
MR CHECKED
MR APPROVED

REVIEW 1
REVIEW 2

08/2020
DATE
AS NOTED
SCALE

L2.02

REV. A

LEGEND - VM21

LANDSCAPE PLANTING SCHEDULE

PLANTING TEMPLATE TYPE 1
TOTAL MITIGATION LENGTH = 1,675 LF

DECIDUOUS AND EVERGREEN TREES

SYMBOL	BOTANICAL NAME/ COMMON PLANT NAME	QUANTITY	SIZE	ROOT	MATURE HEIGHT
AA	AMELANCHIER ARBOREA DOWNY SHADBUSH	17	6'-8' HT. CLUMP	B&B	15'-20' HT.
CF	CORNUS FLORIDA FLOWERING DOGWOOD	16	2" CAL. MIN.	B&B	15'-25' HT.
JV	JUNIPERUS VIRGINIANA EASTERN RED CEDAR	52	5'-6' HT.	B&B	40'-50' HT.
PG	PICEA GLAUCA WHITE SPRUCE	32	5'-6' HT.	B&B	40'-60' HT.
PP	PICEA PUNGENS BLUE SPRUCE	23	2" CAL. MIN.	B&B	50'-70' HT.

SHRUBS

SYMBOL	BOTANICAL NAME/ COMMON PLANT NAME	QUANTITY	SIZE	ROOT	MATURE HEIGHT
AR	ARONIA ARBUTIFOLIA RED CHOKEBERRY	26	24"-30" HT.	#3/5 CONT.	7'-10' HT.
CS	CORNUS SERICEA RED TWIG DOGWOOD	51	24"-30" HT.	#3/5 CONT.	7'-9' HT.
HV	HAMAMELIS VIRGINIANA COMMON WITCH HAZEL	28	3'-4' HT.	B&B	15'-25' HT.
VC	VACCINIUM CORYMBOSUM HIGHBUSH BLUEBERRY	35	24"-30" HT.	#3/5 CONT.	6'-12' HT.
VL	VIBURNUM LENTAGO NANNYBERRY	29	24"-30" HT.	#3/5 CONT.	15'-20' HT.
VT	VIBURNUM TRILOBUM AMERICAN CRANBERRY	43	24"-30" HT.	#3/5 CONT.	8'-10' HT.

LEGEND - VM22

LANDSCAPE PLANTING SCHEDULE

PLANTING TEMPLATE TYPE 1
TOTAL MITIGATION LENGTH = 680 LF

DECIDUOUS AND EVERGREEN TREES

SYMBOL	BOTANICAL NAME/ COMMON PLANT NAME	QUANTITY	SIZE	ROOT	MATURE HEIGHT
AA	AMELANCHIER ARBOREA DOWNY SHADBUSH	6	6'-8' HT. CLUMP	B&B	15'-20' HT.
CF	CORNUS FLORIDA FLOWERING DOGWOOD	7	2" CAL. MIN.	B&B	15'-25' HT.
JV	JUNIPERUS VIRGINIANA EASTERN RED CEDAR	20	5'-6' HT.	B&B	40'-50' HT.
PG	PICEA GLAUCA WHITE SPRUCE	14	5'-6' HT.	B&B	40'-60' HT.
PP	PICEA PUNGENS BLUE SPRUCE	9	2" CAL. MIN.	B&B	50'-70' HT.

SHRUBS

SYMBOL	BOTANICAL NAME/ COMMON PLANT NAME	QUANTITY	SIZE	ROOT	MATURE HEIGHT
AR	ARONIA ARBUTIFOLIA RED CHOKEBERRY	11	24"-30" HT.	#3/5 CONT.	7'-10' HT.
CS	CORNUS SERICEA RED TWIG DOGWOOD	22	24"-30" HT.	#3/5 CONT.	7'-9' HT.
HV	HAMAMELIS VIRGINIANA COMMON WITCH HAZEL	12	3'-4' HT.	B&B	15'-25' HT.
VC	VACCINIUM CORYMBOSUM HIGHBUSH BLUEBERRY	14	24"-30" HT.	#3/5 CONT.	6'-12' HT.
VL	VIBURNUM LENTAGO NANNYBERRY	13	24"-30" HT.	#3/5 CONT.	15'-20' HT.
VT	VIBURNUM TRILOBUM AMERICAN CRANBERRY	16	24"-30" HT.	#3/5 CONT.	8'-10' HT.

LEGEND - VM25

LANDSCAPE PLANTING SCHEDULE

PLANTING TEMPLATE TYPE 1
TOTAL MITIGATION LENGTH = 845 LF

DECIDUOUS AND EVERGREEN TREES

SYMBOL	BOTANICAL NAME/ COMMON PLANT NAME	QUANTITY	SIZE	ROOT	MATURE HEIGHT
AA	AMELANCHIER ARBOREA DOWNY SHADBUSH	9	6'-8' HT. CLUMP	B&B	15'-20' HT.
CF	CORNUS FLORIDA FLOWERING DOGWOOD	9	2" CAL. MIN.	B&B	15'-25' HT.
JV	JUNIPERUS VIRGINIANA EASTERN RED CEDAR	25	5'-6' HT.	B&B	40'-50' HT.
PG	PICEA GLAUCA WHITE SPRUCE	16	5'-6' HT.	B&B	40'-60' HT.
PP	PICEA PUNGENS BLUE SPRUCE	12	2" CAL. MIN.	B&B	50'-70' HT.

SHRUBS

SYMBOL	BOTANICAL NAME/ COMMON PLANT NAME	QUANTITY	SIZE	ROOT	MATURE HEIGHT
AR	ARONIA ARBUTIFOLIA RED CHOKEBERRY	13	24"-30" HT.	#3/5 CONT.	7'-10' HT.
CS	CORNUS SERICEA RED TWIG DOGWOOD	24	24"-30" HT.	#3/5 CONT.	7'-9' HT.
HV	HAMAMELIS VIRGINIANA COMMON WITCH HAZEL	15	3'-4' HT.	B&B	15'-25' HT.
VC	VACCINIUM CORYMBOSUM HIGHBUSH BLUEBERRY	17	24"-30" HT.	#3/5 CONT.	6'-12' HT.
VL	VIBURNUM LENTAGO NANNYBERRY	15	24"-30" HT.	#3/5 CONT.	15'-20' HT.
VT	VIBURNUM TRILOBUM AMERICAN CRANBERRY	24	24"-30" HT.	#3/5 CONT.	8'-10' HT.

LEGEND - TYPE 1 TOTALS

LANDSCAPE PLANTING SCHEDULE

VISUAL MITIGATION PLANTING TEMPLATE TYPE 1

DECIDUOUS AND EVERGREEN TREES

SYMBOL	BOTANICAL NAME/ COMMON PLANT NAME	QUANTITY	SIZE	ROOT	MATURE HEIGHT
AA	AMELANCHIER ARBOREA DOWNY SHADBUSH	65	6'-8' HT. CLUMP	B&B	15'-20' HT.
CF	CORNUS FLORIDA FLOWERING DOGWOOD	67	2" CAL. MIN.	B&B	15'-25' HT.
JV	JUNIPERUS VIRGINIANA EASTERN RED CEDAR	201	5'-6' HT.	B&B	40'-50' HT.
PG	PICEA GLAUCA WHITE SPRUCE	132	5'-6' HT.	B&B	40'-60' HT.
PP	PICEA PUNGENS BLUE SPRUCE	89	2" CAL. MIN.	B&B	50'-70' HT.

SHRUBS

SYMBOL	BOTANICAL NAME/ COMMON PLANT NAME	QUANTITY	SIZE	ROOT	MATURE HEIGHT
AR	ARONIA ARBUTIFOLIA RED CHOKEBERRY	107	24"-30" HT.	#3/5 CONT.	7'-10' HT.
CS	CORNUS SERICEA RED TWIG DOGWOOD	201	24"-30" HT.	#3/5 CONT.	7'-9' HT.
HV	HAMAMELIS VIRGINIANA COMMON WITCH HAZEL	113	3'-4' HT.	B&B	15'-25' HT.
VC	VACCINIUM CORYMBOSUM HIGHBUSH BLUEBERRY	136	24"-30" HT.	#3/5 CONT.	6'-12' HT.
VL	VIBURNUM LENTAGO NANNYBERRY	116	24"-30" HT.	#3/5 CONT.	15'-20' HT.
VT	VIBURNUM TRILOBUM AMERICAN CRANBERRY	165	24"-30" HT.	#3/5 CONT.	8'-10' HT.

UNDER NEW YORK STATE EDUCATION LAW ARTICLE 145 (ENGINEERING), SECTION 7209 (2), IT IS A VIOLATION OF THE LAW FOR ANY PERSON, UNLESS ACTING UNDER THE DIRECTION OF A LICENSED PROFESSIONAL ENGINEER, TO ALTER THIS DOCUMENT.



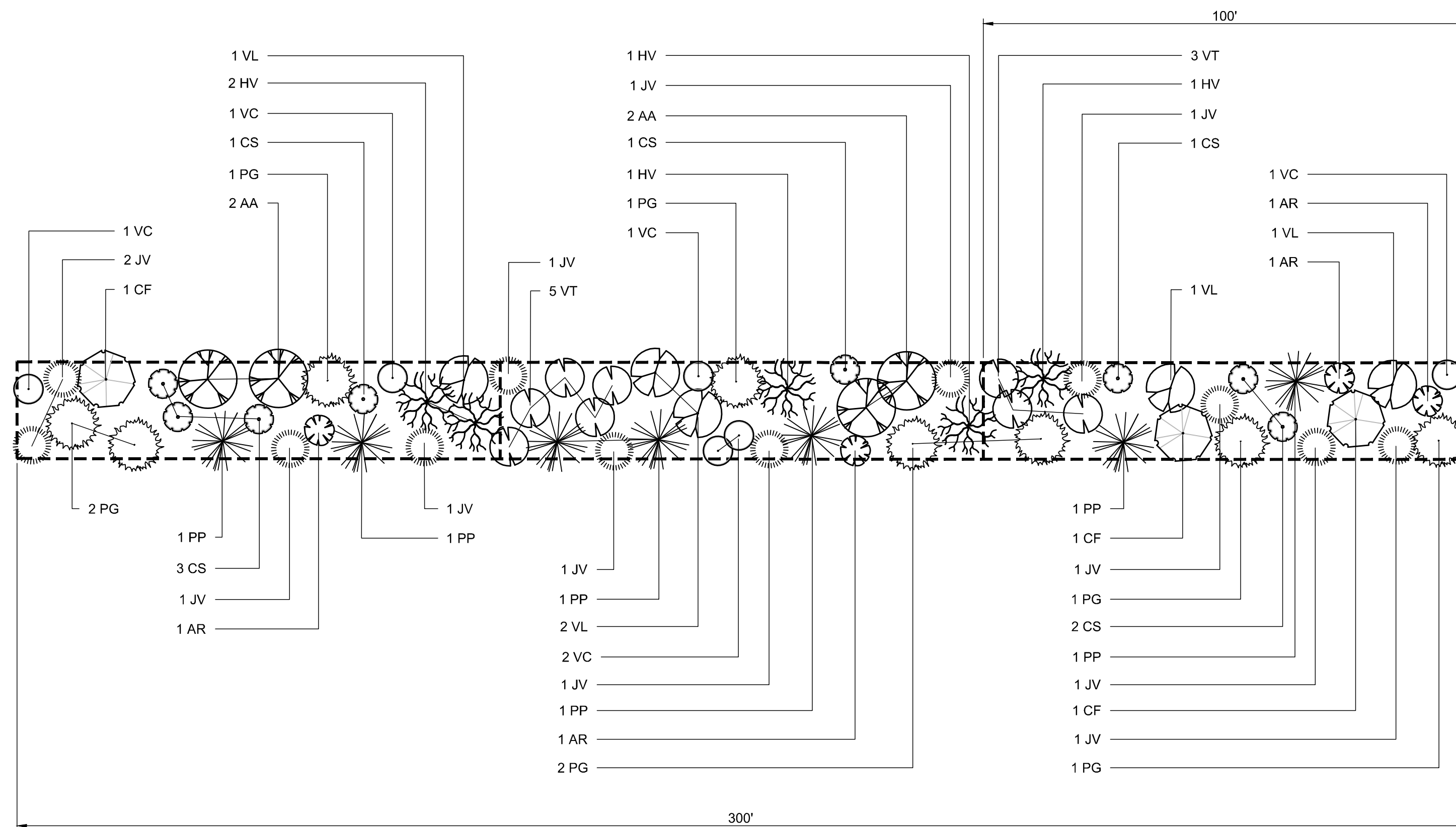
PRELIMINARY
NOT FOR CONSTRUCTION

PREPARED FOR:

700 Universe Blvd.
Juno Beach, FL 33408

4900 RITTER ROAD MECHANICSBURG, PA TRC PROJECT NO: 276517.4552					
REV	DESCRIPTION	DATE	DES	CHK	APP

MR DESIGNED TKM DRAWN MR CHECKED MR APPROVED	PRELIMINARY LANDSCAPE PLAN EXCELSIOR SOLAR ENERGY CENTER, LLC LANDSCAPE MITIGATION TYPE 1 TEMPLATE & SCHEDULES TOWN OF BYRON GENESEE COUNTY, NY	08/2020 DATE AS NOTED SCALE		L2.03	REV. A
---	---	--------------------------------------	--	-------	-----------



PLANTING TEMPLATE TYPE 2

LEGEND					
VISUAL MITIGATION PLANTING TEMPLATE - TYPE 2					
LANDSCAPE PLANTING SCHEDULE (TYPICAL VISUAL BUFFER/SCREENING EFFORT)					
DECIDUOUS AND EVERGREEN TREES					
SYMBOL	BOTANICAL NAME/ COMMON PLANT NAME	QUANTITY	SIZE	ROOT	MATURE HEIGHT
AA	AMELANCHIER ARBOREA DOWNY SHADBUSH	4	6'-8' HT. CLUMP	B&B	15'-20' HT.
CF	CORNUS FLORIDA FLOWERING DOGWOOD	3	2" CAL. MIN.	B&B	15'-25' HT.
JV	JUNIPERUS VIRGINIANA EASTERN RED CEDAR	12	5'-6' HT.	B&B	40'-50' HT.
PG	PICEA GLAUCA WHITE SPRUCE	8	5'-6' HT.	B&B	40'-60' HT.
PP	PICEA PUNGENS BLUE SPRUCE	6	2" CAL. MIN.	B&B	50'-70' HT.
SHRUBS					
SYMBOL	BOTANICAL NAME/ COMMON PLANT NAME	QUANTITY	SIZE	ROOT	MATURE HEIGHT
AR	ARONIA ARBUTIFOLIA RED CHOKEBERRY	4	24"-30" HT.	#3/5 CONT.	7'-10' HT.
CS	CORNUS SERICEA RED TWIG DOGWOOD	8	24"-30" HT.	#3/5 CONT.	7'-9' HT.
HV	HAMAMELIS VIRGINIANA COMMON WITCH HAZEL	5	3'-4' HT.	B&B	15'-25' HT.
VC	VACCINIUM CORYMBOSUM HIGHBUSH BLUEBERRY	6	24"-30" HT.	#3/5 CONT.	6'-12' HT.
VL	VIBURNUM LENTAGO NANNYBERRY	5	24"-30" HT.	#3/5 CONT.	15'-20' HT.
VT	VIBURNUM TRILOBUM AMERICAN CRANBERRY	8	24"-30" HT.	#3/5 CONT.	8'-10' HT.

LEGEND - VM1

LANDSCAPE PLANTING SCHEDULE

PLANTING TEMPLATE TYPE 2
TOTAL MITIGATION LENGTH = 2,180 LF

DECIDUOUS AND EVERGREEN TREES

SYMBOL	BOTANICAL NAME/ COMMON PLANT NAME	QUANTITY	SIZE	ROOT	MATURE HEIGHT
AA	AMELANCHIER ARBOREA DOWNY SHADBUSH	30	6'-8' HT. CLUMP	B&B	15'-20' HT.
CF	CORNUS FLORIDA FLOWERING DOGWOOD	22	2" CAL. MIN.	B&B	15'-25' HT.
JV	JUNIPERUS VIRGINIANA EASTERN RED CEDAR	87	5'-6' HT.	B&B	40'-50' HT.
PG	PICEA GLAUCA WHITE SPRUCE	59	5'-6' HT.	B&B	40'-60' HT.
PP	PICEA PUNGENS BLUE SPRUCE	44	2" CAL. MIN.	B&B	50'-70' HT.

SHRUBS

SYMBOL	BOTANICAL NAME/ COMMON PLANT NAME	QUANTITY	SIZE	ROOT	MATURE HEIGHT
AR	ARONIA ARBUTIFOLIA RED CHOKEBERRY	29	24"-30" HT.	#3/5 CONT.	7'-10' HT.
CS	CORNUS SERICEA RED TWIG DOGWOOD	60	24"-30" HT.	#3/5 CONT.	7'-9' HT.
HV	HAMAMELIS VIRGINIANA COMMON WITCH HAZEL	35	3'-4' HT.	B&B	15'-25' HT.
VC	VACCINIUM CORYMBOSUM HIGHBUSH BLUEBERRY	44	24"-30" HT.	#3/5 CONT.	6'-12' HT.
VL	VIBURNUM LENTAGO NANNYBERRY	35	24"-30" HT.	#3/5 CONT.	15'-20' HT.
VT	VIBURNUM TRILOBUM AMERICAN CRANBERRY	56	24"-30" HT.	#3/5 CONT.	8'-10' HT.

LEGEND - VM2

LANDSCAPE PLANTING SCHEDULE

PLANTING TEMPLATE TYPE 2
TOTAL MITIGATION LENGTH = 610 LF

DECIDUOUS AND EVERGREEN TREES

SYMBOL	BOTANICAL NAME/ COMMON PLANT NAME	QUANTITY	SIZE	ROOT	MATURE HEIGHT
AA	AMELANCHIER ARBOREA DOWNY SHADBUSH	8	6'-8' HT. CLUMP	B&B	15'-20' HT.
CF	CORNUS FLORIDA FLOWERING DOGWOOD	6	2" CAL. MIN.	B&B	15'-25' HT.
JV	JUNIPERUS VIRGINIANA EASTERN RED CEDAR	26	5'-6' HT.	B&B	40'-50' HT.
PG	PICEA GLAUCA WHITE SPRUCE	16	5'-6' HT.	B&B	40'-60' HT.
PP	PICEA PUNGENS BLUE SPRUCE	12	2" CAL. MIN.	B&B	50'-70' HT.

SHRUBS

SYMBOL	BOTANICAL NAME/ COMMON PLANT NAME	QUANTITY	SIZE	ROOT	MATURE HEIGHT
AR	ARONIA ARBUTIFOLIA RED CHOKEBERRY	8	24"-30" HT.	#3/5 CONT.	7'-10' HT.
CS	CORNUS SERICEA RED TWIG DOGWOOD	16	24"-30" HT.	#3/5 CONT.	7'-9' HT.
HV	HAMAMELIS VIRGINIANA COMMON WITCH HAZEL	10	3'-4' HT.	B&B	15'-25' HT.
VC	VACCINIUM CORYMBOSUM HIGHBUSH BLUEBERRY	13	24"-30" HT.	#3/5 CONT.	6'-12' HT.
VL	VIBURNUM LENTAGO NANNYBERRY	10	24"-30" HT.	#3/5 CONT.	15'-20' HT.
VT	VIBURNUM TRILOBUM AMERICAN CRANBERRY	16	24"-30" HT.	#3/5 CONT.	8'-10' HT.

LEGEND - VM3

LANDSCAPE PLANTING SCHEDULE

PLANTING TEMPLATE TYPE 2
TOTAL MITIGATION LENGTH = 1,170 LF

DECIDUOUS AND EVERGREEN TREES

SYMBOL	BOTANICAL NAME/ COMMON PLANT NAME	QUANTITY	SIZE	ROOT	MATURE HEIGHT
AA	AMELANCHIER ARBOREA DOWNY SHADBUSH	16	6'-8' HT. CLUMP	B&B	15'-20' HT.
CF	CORNUS FLORIDA FLOWERING DOGWOOD	11	2" CAL. MIN.	B&B	15'-25' HT.
JV	JUNIPERUS VIRGINIANA EASTERN RED CEDAR	47	5'-6' HT.	B&B	40'-50' HT.
PG	PICEA GLAUCA WHITE SPRUCE	31	5'-6' HT.	B&B	40'-60' HT.
PP	PICEA PUNGENS BLUE SPRUCE	24	2" CAL. MIN.	B&B	50'-70' HT.

SHRUBS

SYMBOL	BOTANICAL NAME/ COMMON PLANT NAME	QUANTITY	SIZE	ROOT	MATURE HEIGHT
AR	ARONIA ARBUTIFOLIA RED CHOKEBERRY	14	24"-30" HT.	#3/5 CONT.	7'-10' HT.
CS	CORNUS SERICEA RED TWIG DOGWOOD	32	24"-30" HT.	#3/5 CONT.	7'-9' HT.
HV	HAMAMELIS VIRGINIANA COMMON WITCH HAZEL	20	3'-4' HT.	B&B	15'-25' HT.
VC	VACCINIUM CORYMBOSUM HIGHBUSH BLUEBERRY	23	24"-30" HT.	#3/5 CONT.	6'-12' HT.
VL	VIBURNUM LENTAGO NANNYBERRY	19	24"-30" HT.	#3/5 CONT.	15'-20' HT.
VT	VIBURNUM TRILOBUM AMERICAN CRANBERRY	32	24"-30" HT.	#3/5 CONT.	8'-10' HT.

UNDER NEW YORK STATE EDUCATION LAW ARTICLE 145 (ENGINEERING), SECTION 7209 (2), IT IS A VIOLATION OF THE LAW FOR ANY PERSON, UNLESS ACTING UNDER THE DIRECTION OF A LICENSED PROFESSIONAL ENGINEER, TO ALTER THIS DOCUMENT.

PRELIMINARY
NOT FOR CONSTRUCTION



PREPARED FOR:

700 Universe Blvd.
Juno Beach, FL 33408

TRC 4900 RITTER ROAD
MECHANICSBURG, PA

TRC PROJECT NO: 276517.4552

REV	DESCRIPTION	DATE	DES	CHK	APP

PRELIMINARY
LANDSCAPE PLAN
EXCELSIOR SOLAR ENERGY CENTER, LLC
LANDSCAPE MITIGATION TYPE 2 TEMPLATE & SCHEDULES
TOWN OF BYRON GENESEE COUNTY, NY

MR DESIGNED	TRC	L2.04	REV. A
TKM DRAWN			
MR CHECKED	08/2020 DATE	AS NOTED SCALE	
MR APPROVED			

LEGEND - VM4

LANDSCAPE PLANTING SCHEDULE

PLANTING TEMPLATE TYPE 2

TOTAL MITIGATION LENGTH = 780 LF

DECIDUOUS AND EVERGREEN TREES

SYMBOL	BOTANICAL NAME/ COMMON PLANT NAME	QUANTITY	SIZE	ROOT	MATURE HEIGHT
AA	AMELANCHIER ARBOREA DOWNY SHADBUSH	11	6'-8' HT. CLUMP	B&B	15'-20' HT.
CF	CORNUS FLORIDA FLOWERING DOGWOOD	7	2" CAL. MIN.	B&B	15'-25' HT.
JV	JUNIPERUS VIRGINIANA EASTERN RED CEDAR	31	5'-6' HT.	B&B	40'-50' HT.
PG	PICEA GLAUCA WHITE SPRUCE	20	5'-6' HT.	B&B	40'-60' HT.
PP	PICEA PUNGENS BLUE SPRUCE	16	2" CAL. MIN.	B&B	50'-70' HT.

SHRUBS

SYMBOL	BOTANICAL NAME/ COMMON PLANT NAME	QUANTITY	SIZE	ROOT	MATURE HEIGHT
AR	ARONIA ARBUTIFOLIA RED CHOKEBERRY	10	24"-30" HT.	#3/5 CONT.	7'-10' HT.
CS	CORNUS SERICEA RED TWIG DOGWOOD	21	24"-30" HT.	#3/5 CONT.	7'-9' HT.
HV	HAMAMELIS VIRGINIANA COMMON WITCH HAZEL	13	3'-4' HT.	B&B	15'-25' HT.
VC	VACCINIUM CORYMBOSUM HIGHBUSH BLUEBERRY	17	24"-30" HT.	#3/5 CONT.	6'-12' HT.
VL	VIBURNUM LENTAGO NANNYBERRY	13	24"-30" HT.	#3/5 CONT.	15'-20' HT.
VT	VIBURNUM TRILOBUM AMERICAN CRANBERRY	21	24"-30" HT.	#3/5 CONT.	8'-10' HT.

LEGEND - VM7

LANDSCAPE PLANTING SCHEDULE

PLANTING TEMPLATE TYPE 2

TOTAL MITIGATION LENGTH = 1,750 LF

DECIDUOUS AND EVERGREEN TREES

SYMBOL	BOTANICAL NAME/ COMMON PLANT NAME	QUANTITY	SIZE	ROOT	MATURE HEIGHT
AA	AMELANCHIER ARBOREA DOWNY SHADBUSH	24	6'-8' HT. CLUMP	B&B	15'-20' HT.
CF	CORNUS FLORIDA FLOWERING DOGWOOD	17	2" CAL. MIN.	B&B	15'-25' HT.
JV	JUNIPERUS VIRGINIANA EASTERN RED CEDAR	70	5'-6' HT.	B&B	40'-50' HT.
PG	PICEA GLAUCA WHITE SPRUCE	46	5'-6' HT.	B&B	40'-60' HT.
PP	PICEA PUNGENS BLUE SPRUCE	35	2" CAL. MIN.	B&B	50'-70' HT.

SHRUBS

SYMBOL	BOTANICAL NAME/ COMMON PLANT NAME	QUANTITY	SIZE	ROOT	MATURE HEIGHT
AR	ARONIA ARBUTIFOLIA RED CHOKEBERRY	22	24"-30" HT.	#3/5 CONT.	7'-10' HT.
CS	CORNUS SERICEA RED TWIG DOGWOOD	46	24"-30" HT.	#3/5 CONT.	7'-9' HT.
HV	HAMAMELIS VIRGINIANA COMMON WITCH HAZEL	30	3'-4' HT.	B&B	15'-25' HT.
VC	VACCINIUM CORYMBOSUM HIGHBUSH BLUEBERRY	35	24"-30" HT.	#3/5 CONT.	6'-12' HT.
VL	VIBURNUM LENTAGO NANNYBERRY	29	24"-30" HT.	#3/5 CONT.	15'-20' HT.
VT	VIBURNUM TRILOBUM AMERICAN CRANBERRY	48	24"-30" HT.	#3/5 CONT.	8'-10' HT.

LEGEND - VM5

LANDSCAPE PLANTING SCHEDULE

PLANTING TEMPLATE TYPE 2

TOTAL MITIGATION LENGTH = 2,290 LF

DECIDUOUS AND EVERGREEN TREES

SYMBOL	BOTANICAL NAME/ COMMON PLANT NAME	QUANTITY	SIZE	ROOT	MATURE HEIGHT
AA	AMELANCHIER ARBOREA DOWNY SHADBUSH	32	6'-8' HT. CLUMP	B&B	15'-20' HT.
CF	CORNUS FLORIDA FLOWERING DOGWOOD	22	2" CAL. MIN.	B&B	15'-25' HT.
JV	JUNIPERUS VIRGINIANA EASTERN RED CEDAR	91	5'-6' HT.	B&B	40'-50' HT.
PG	PICEA GLAUCA WHITE SPRUCE	61	5'-6' HT.	B&B	40'-60' HT.
PP	PICEA PUNGENS BLUE SPRUCE	46	2" CAL. MIN.	B&B	50'-70' HT.

SHRUBS

SYMBOL	BOTANICAL NAME/ COMMON PLANT NAME	QUANTITY	SIZE	ROOT	MATURE HEIGHT
AR	ARONIA ARBUTIFOLIA RED CHOKEBERRY	30	24"-30" HT.	#3/5 CONT.	7'-10' HT.
CS	CORNUS SERICEA RED TWIG DOGWOOD	61	24"-30" HT.	#3/5 CONT.	7'-9' HT.
HV	HAMAMELIS VIRGINIANA COMMON WITCH HAZEL	38	3'-4' HT.	B&B	15'-25' HT.
VC	VACCINIUM CORYMBOSUM HIGHBUSH BLUEBERRY	47	24"-30" HT.	#3/5 CONT.	6'-12' HT.
VL	VIBURNUM LENTAGO NANNYBERRY	38	24"-30" HT.	#3/5 CONT.	15'-20' HT.
VT	VIBURNUM TRILOBUM AMERICAN CRANBERRY	61	24"-30" HT.	#3/5 CONT.	8'-10' HT.

LEGEND - VM8

LANDSCAPE PLANTING SCHEDULE

PLANTING TEMPLATE TYPE 2

TOTAL MITIGATION LENGTH = 1,765 LF

DECIDUOUS AND EVERGREEN TREES

SYMBOL	BOTANICAL NAME/ COMMON PLANT NAME	QUANTITY	SIZE	ROOT	MATURE HEIGHT
AA	AMELANCHIER ARBOREA DOWNY SHADBUSH	24	6'-8' HT. CLUMP	B&B	15'-20' HT.
CF	CORNUS FLORIDA FLOWERING DOGWOOD	19	2" CAL. MIN.	B&B	15'-25' HT.
JV	JUNIPERUS VIRGINIANA EASTERN RED CEDAR	70	5'-6' HT.	B&B	40'-50' HT.
PG	PICEA GLAUCA WHITE SPRUCE	47	5'-6' HT.	B&B	40'-60' HT.
PP	PICEA PUNGENS BLUE SPRUCE	36	2" CAL. MIN.	B&B	50'-70' HT.

SHRUBS

SYMBOL	BOTANICAL NAME/ COMMON PLANT NAME	QUANTITY	SIZE	ROOT	MATURE HEIGHT
AR	ARONIA ARBUTIFOLIA RED CHOKEBERRY	22	24"-30" HT.	#3/5 CONT.	7'-10' HT.
CS	CORNUS SERICEA RED TWIG DOGWOOD	48	24"-30" HT.	#3/5 CONT.	7'-9' HT.
HV	HAMAMELIS VIRGINIANA COMMON WITCH HAZEL	30	3'-4' HT.	B&B	15'-25' HT.
VC	VACCINIUM CORYMBOSUM HIGHBUSH BLUEBERRY	35	24"-30" HT.	#3/5 CONT.	6'-12' HT.
VL	VIBURNUM LENTAGO NANNYBERRY	29	24"-30" HT.	#3/5 CONT.	15'-20' HT.
VT	VIBURNUM TRILOBUM AMERICAN CRANBERRY	48	24"-30" HT.	#3/5 CONT.	8'-10' HT.

LEGEND - VM6

LANDSCAPE PLANTING SCHEDULE

PLANTING TEMPLATE TYPE 2

TOTAL MITIGATION LENGTH = 735 LF

DECIDUOUS AND EVERGREEN TREES

SYMBOL	BOTANICAL NAME/ COMMON PLANT NAME	QUANTITY	SIZE	ROOT	MATURE HEIGHT
AA	AMELANCHIER ARBOREA DOWNY SHADBUSH	10	6'-8' HT. CLUMP	B&B	15'-20' HT.
CF	CORNUS FLORIDA FLOWERING DOGWOOD	7	2" CAL. MIN.	B&B	15'-25' HT.
JV	JUNIPERUS VIRGINIANA EASTERN RED CEDAR	30	5'-6' HT.	B&B	40'-50' HT.
PG	PICEA GLAUCA WHITE SPRUCE	19	5'-6' HT.	B&B	40'-60' HT.
PP	PICEA PUNGENS BLUE SPRUCE	15	2" CAL. MIN.	B&B	50'-70' HT.

SHRUBS

SYMBOL	BOTANICAL NAME/ COMMON PLANT NAME	QUANTITY	SIZE	ROOT	MATURE HEIGHT
AR	ARONIA ARBUTIFOLIA RED CHOKEBERRY	9	24"-30" HT.	#3/5 CONT.	7'-10' HT.
CS	CORNUS SERICEA RED TWIG DOGWOOD	20	24"-30" HT.	#3/5 CONT.	7'-9' HT.
HV	HAMAMELIS VIRGINIANA COMMON WITCH HAZEL	12	3'-4' HT.	B&B	15'-25' HT.
VC	VACCINIUM CORYMBOSUM HIGHBUSH BLUEBERRY	14	24"-30" HT.	#3/5 CONT.	6'-12' HT.
VL	VIBURNUM LENTAGO NANNYBERRY	12	24"-30" HT.	#3/5 CONT.	15'-20' HT.
VT	VIBURNUM TRILOBUM AMERICAN CRANBERRY	21	24"-30" HT.	#3/5 CONT.	8'-10' HT.

LEGEND - VM15

LANDSCAPE PLANTING SCHEDULE

PLANTING TEMPLATE TYPE 2

TOTAL MITIGATION LENGTH = 1,790 LF

DECIDUOUS AND EVERGREEN TREES

SYMBOL	BOTANICAL NAME/ COMMON PLANT NAME	QUANTITY	SIZE	ROOT	MATURE HEIGHT
AA	AMELANCHIER ARBOREA DOWNY SHADBUSH	24	6'-8' HT. CLUMP	B&B	15'-20' HT.
CF	CORNUS FLORIDA FLOWERING DOGWOOD	18	2" CAL. MIN.	B&B	15'-25' HT.
JV	JUNIPERUS VIRGINIANA EASTERN RED CEDAR	72	5'-6' HT.	B&B	40'-50' HT.
PG	PICEA GLAUCA WHITE SPRUCE	47	5'-6' HT.	B&B	40'-60' HT.
PP	PICEA PUNGENS BLUE SPRUCE	36	2" CAL. MIN.	B&B	50'-70' HT.

SHRUBS

SYMBOL	BOTANICAL NAME/ COMMON PLANT NAME	QUANTITY	SIZE	ROOT	MATURE HEIGHT
AR	ARONIA ARBUTIFOLIA RED CHOKEBERRY	23	24"-30" HT.	#3/5 CONT.	7'-10' HT.
CS	CORNUS SERICEA RED TWIG DOGWOOD	48	24"-30" HT.	#3/5 CONT.	7'-9' HT.
HV	HAMAMELIS VIRGINIANA COMMON WITCH HAZEL	30	3'-4' HT.	B&B	15'-25' HT.
VC	VACCINIUM CORYMBOSUM HIGHBUSH BLUEBERRY	35	24"-30" HT.	#3/5 CONT.	6'-12' HT.
VL	VIBURNUM LENTAGO NANNYBERRY	30	24"-30" HT.	#3/5 CONT.	15'-20' HT.
VT	VIBURNUM TRILOBUM AMERICAN CRANBERRY	48	24"-30" HT.	#3/5 CONT.	8'-10' HT.

UNDER NEW YORK STATE EDUCATION LAW ARTICLE 145 (ENGINEERING), SECTION 7209 (2), IT IS A VIOLATION OF THE LAW FOR ANY PERSON, UNLESS ACTING UNDER THE DIRECTION OF A LICENSED PROFESSIONAL ENGINEER, TO ALTER THIS DOCUMENT.

PRELIMINARY
NOT FOR CONSTRUCTION



PREPARED FOR:

700 Universe Blvd.
Juno Beach, FL 33408

4900 RITTER ROAD MECHANICSBURG, PA TRC PROJECT NO: 276517.4552					
REV	DESCRIPTION	DATE	DES	CHK	APP

MR DESIGNED TKM DRAWN MR CHECKED MR APPROVED	PRELIMINARY LANDSCAPE PLAN EXCELSIOR SOLAR ENERGY CENTER, LLC LANDSCAPE MITIGATION TYPE 2 TEMPLATE & SCHEDULES TOWN OF BYRON GENESEE COUNTY, NY	08/2020 DATE AS NOTED SCALE		L2.05	REV. A
---	---	--------------------------------------	--	-------	-----------

LEGEND - VM18

LANDSCAPE PLANTING SCHEDULE

PLANTING TEMPLATE TYPE 2
TOTAL MITIGATION LENGTH = 2,440 LF

DECIDUOUS AND EVERGREEN TREES

SYMBOL	BOTANICAL NAME/ COMMON PLANT NAME	QUANTITY	SIZE	ROOT	MATURE HEIGHT
AA	AMELANCHIER ARBOREA DOWNY SHADBUSH	33	6'-8' HT. CLUMP	B&B	15'-20' HT.
CF	CORNUS FLORIDA FLOWERING DOGWOOD	25	2" CAL. MIN.	B&B	15'-25' HT.
JV	JUNIPERUS VIRGINIANA EASTERN RED CEDAR	98	5'-6' HT.	B&B	40'-50' HT.
PG	PICEA GLAUCA WHITE SPRUCE	66	5'-6' HT.	B&B	40'-60' HT.
PP	PICEA PUNGENS BLUE SPRUCE	48	2" CAL. MIN.	B&B	50'-70' HT.

SHRUBS

SYMBOL	BOTANICAL NAME/ COMMON PLANT NAME	QUANTITY	SIZE	ROOT	MATURE HEIGHT
AR	ARONIA ARBUTIFOLIA RED CHOKEBERRY	32	24"-30" HT.	#3/5 CONT.	7'-10' HT.
CS	CORNUS SERICEA RED TWIG DOGWOOD	66	24"-30" HT.	#3/5 CONT.	7'-9' HT.
HV	HAMAMELIS VIRGINIANA COMMON WITCH HAZEL	40	3'-4' HT.	B&B	15'-25' HT.
VC	VACCINIUM CORYMBOSUM HIGHBUSH BLUEBERRY	49	24"-30" HT.	#3/5 CONT.	6'-12' HT.
VL	VIBURNUM LENTAGO NANNYBERRY	40	24"-30" HT.	#3/5 CONT.	15'-20' HT.
VT	VIBURNUM TRILOBUM AMERICAN CRANBERRY	64	24"-30" HT.	#3/5 CONT.	8'-10' HT.

LEGEND - VM23

LANDSCAPE PLANTING SCHEDULE

PLANTING TEMPLATE TYPE 2
TOTAL MITIGATION LENGTH = 685 LF

DECIDUOUS AND EVERGREEN TREES

SYMBOL	BOTANICAL NAME/ COMMON PLANT NAME	QUANTITY	SIZE	ROOT	MATURE HEIGHT
AA	AMELANCHIER ARBOREA DOWNY SHADBUSH	10	6'-8' HT. CLUMP	B&B	15'-20' HT.
CF	CORNUS FLORIDA FLOWERING DOGWOOD	7	2" CAL. MIN.	B&B	15'-25' HT.
JV	JUNIPERUS VIRGINIANA EASTERN RED CEDAR	28	5'-6' HT.	B&B	40'-50' HT.
PG	PICEA GLAUCA WHITE SPRUCE	19	5'-6' HT.	B&B	40'-60' HT.
PP	PICEA PUNGENS BLUE SPRUCE	14	2" CAL. MIN.	B&B	50'-70' HT.

SHRUBS

SYMBOL	BOTANICAL NAME/ COMMON PLANT NAME	QUANTITY	SIZE	ROOT	MATURE HEIGHT
AR	ARONIA ARBUTIFOLIA RED CHOKEBERRY	9	24"-30" HT.	#3/5 CONT.	7'-10' HT.
CS	CORNUS SERICEA RED TWIG DOGWOOD	20	24"-30" HT.	#3/5 CONT.	7'-9' HT.
HV	HAMAMELIS VIRGINIANA COMMON WITCH HAZEL	11	3'-4' HT.	B&B	15'-25' HT.
VC	VACCINIUM CORYMBOSUM HIGHBUSH BLUEBERRY	14	24"-30" HT.	#3/5 CONT.	6'-12' HT.
VL	VIBURNUM LENTAGO NANNYBERRY	10	24"-30" HT.	#3/5 CONT.	15'-20' HT.
VT	VIBURNUM TRILOBUM AMERICAN CRANBERRY	16	24"-30" HT.	#3/5 CONT.	8'-10' HT.

LEGEND - VM19

LANDSCAPE PLANTING SCHEDULE

PLANTING TEMPLATE TYPE 2
TOTAL MITIGATION LENGTH = 945 LF

DECIDUOUS AND EVERGREEN TREES

SYMBOL	BOTANICAL NAME/ COMMON PLANT NAME	QUANTITY	SIZE	ROOT	MATURE HEIGHT
AA	AMELANCHIER ARBOREA DOWNY SHADBUSH	13	6'-8' HT. CLUMP	B&B	15'-20' HT.
CF	CORNUS FLORIDA FLOWERING DOGWOOD	10	2" CAL. MIN.	B&B	15'-25' HT.
JV	JUNIPERUS VIRGINIANA EASTERN RED CEDAR	38	5'-6' HT.	B&B	40'-50' HT.
PG	PICEA GLAUCA WHITE SPRUCE	26	5'-6' HT.	B&B	40'-60' HT.
PP	PICEA PUNGENS BLUE SPRUCE	19	2" CAL. MIN.	B&B	50'-70' HT.

SHRUBS

SYMBOL	BOTANICAL NAME/ COMMON PLANT NAME	QUANTITY	SIZE	ROOT	MATURE HEIGHT
AR	ARONIA ARBUTIFOLIA RED CHOKEBERRY	12	24"-30" HT.	#3/5 CONT.	7'-10' HT.
CS	CORNUS SERICEA RED TWIG DOGWOOD	26	24"-30" HT.	#3/5 CONT.	7'-9' HT.
HV	HAMAMELIS VIRGINIANA COMMON WITCH HAZEL	15	3'-4' HT.	B&B	15'-25' HT.
VC	VACCINIUM CORYMBOSUM HIGHBUSH BLUEBERRY	19	24"-30" HT.	#3/5 CONT.	6'-12' HT.
VL	VIBURNUM LENTAGO NANNYBERRY	15	24"-30" HT.	#3/5 CONT.	15'-20' HT.
VT	VIBURNUM TRILOBUM AMERICAN CRANBERRY	24	24"-30" HT.	#3/5 CONT.	8'-10' HT.

LEGEND - VM24

LANDSCAPE PLANTING SCHEDULE

PLANTING TEMPLATE TYPE 2
TOTAL MITIGATION LENGTH = 485 LF

DECIDUOUS AND EVERGREEN TREES

SYMBOL	BOTANICAL NAME/ COMMON PLANT NAME	QUANTITY	SIZE	ROOT	MATURE HEIGHT
AA	AMELANCHIER ARBOREA DOWNY SHADBUSH	8	6'-8' HT. CLUMP	B&B	15'-20' HT.
CF	CORNUS FLORIDA FLOWERING DOGWOOD	4	2" CAL. MIN.	B&B	15'-25' HT.
JV	JUNIPERUS VIRGINIANA EASTERN RED CEDAR	19	5'-6' HT.	B&B	40'-50' HT.
PG	PICEA GLAUCA WHITE SPRUCE	14	5'-6' HT.	B&B	40'-60' HT.
PP	PICEA PUNGENS BLUE SPRUCE	10	2" CAL. MIN.	B&B	50'-70' HT.

SHRUBS

SYMBOL	BOTANICAL NAME/ COMMON PLANT NAME	QUANTITY	SIZE	ROOT	MATURE HEIGHT
AR	ARONIA ARBUTIFOLIA RED CHOKEBERRY	6	24"-30" HT.	#3/5 CONT.	7'-10' HT.
CS	CORNUS SERICEA RED TWIG DOGWOOD	13	24"-30" HT.	#3/5 CONT.	7'-9' HT.
HV	HAMAMELIS VIRGINIANA COMMON WITCH HAZEL	8	3'-4' HT.	B&B	15'-25' HT.
VC	VACCINIUM CORYMBOSUM HIGHBUSH BLUEBERRY	11	24"-30" HT.	#3/5 CONT.	6'-12' HT.
VL	VIBURNUM LENTAGO NANNYBERRY	8	24"-30" HT.	#3/5 CONT.	15'-20' HT.
VT	VIBURNUM TRILOBUM AMERICAN CRANBERRY	13	24"-30" HT.	#3/5 CONT.	8'-10' HT.

LEGEND - VM20

LANDSCAPE PLANTING SCHEDULE

PLANTING TEMPLATE TYPE 2
TOTAL MITIGATION LENGTH = 785 LF

DECIDUOUS AND EVERGREEN TREES

SYMBOL	BOTANICAL NAME/ COMMON PLANT NAME	QUANTITY	SIZE	ROOT	MATURE HEIGHT
AA	AMELANCHIER ARBOREA DOWNY SHADBUSH	12	6'-8' HT. CLUMP	B&B	15'-20' HT.
CF	CORNUS FLORIDA FLOWERING DOGWOOD	7	2" CAL. MIN.	B&B	15'-25' HT.
JV	JUNIPERUS VIRGINIANA EASTERN RED CEDAR	31	5'-6' HT.	B&B	40'-50' HT.
PG	PICEA GLAUCA WHITE SPRUCE	22	5'-6' HT.	B&B	40'-60' HT.
PP	PICEA PUNGENS BLUE SPRUCE	16	2" CAL. MIN.	B&B	50'-70' HT.

SHRUBS

SYMBOL	BOTANICAL NAME/ COMMON PLANT NAME	QUANTITY	SIZE	ROOT	MATURE HEIGHT
AR	ARONIA ARBUTIFOLIA RED CHOKEBERRY	10	24"-30" HT.	#3/5 CONT.	7'-10' HT.
CS	CORNUS SERICEA RED TWIG DOGWOOD	21	24"-30" HT.	#3/5 CONT.	7'-9' HT.
HV	HAMAMELIS VIRGINIANA COMMON WITCH HAZEL	13	3'-4' HT.	B&B	15'-25' HT.
VC	VACCINIUM CORYMBOSUM HIGHBUSH BLUEBERRY	17	24"-30" HT.	#3/5 CONT.	6'-12' HT.
VL	VIBURNUM LENTAGO NANNYBERRY	13	24"-30" HT.	#3/5 CONT.	15'-20' HT.
VT	VIBURNUM TRILOBUM AMERICAN CRANBERRY	21	24"-30" HT.	#3/5 CONT.	8'-10' HT.

LEGEND - VM26

LANDSCAPE PLANTING SCHEDULE

PLANTING TEMPLATE TYPE 2
TOTAL MITIGATION LENGTH = 2,150 LF

DECIDUOUS AND EVERGREEN TREES

SYMBOL	BOTANICAL NAME/ COMMON PLANT NAME	QUANTITY	SIZE	ROOT	MATURE HEIGHT
AA	AMELANCHIER ARBOREA DOWNY SHADBUSH	29	6'-8' HT. CLUMP	B&B	15'-20' HT.
CF	CORNUS FLORIDA FLOWERING DOGWOOD	22	2" CAL. MIN.	B&B	15'-25' HT.
JV	JUNIPERUS VIRGINIANA EASTERN RED CEDAR	86	5'-6' HT.	B&B	40'-50' HT.
PG	PICEA GLAUCA WHITE SPRUCE	58	5'-6' HT.	B&B	40'-60' HT.
PP	PICEA PUNGENS BLUE SPRUCE	43	2" CAL. MIN.	B&B	50'-70' HT.

SHRUBS

SYMBOL	BOTANICAL NAME/ COMMON PLANT NAME	QUANTITY	SIZE	ROOT	MATURE HEIGHT
AR	ARONIA ARBUTIFOLIA RED CHOKEBERRY	28	24"-30" HT.	#3/5 CONT.	7'-10' HT.
CS	CORNUS SERICEA RED TWIG DOGWOOD	59	24"-30" HT.	#3/5 CONT.	7'-9' HT.
HV	HAMAMELIS VIRGINIANA COMMON WITCH HAZEL	35	3'-4' HT.	B&B	15'-25' HT.
VC	VACCINIUM CORYMBOSUM HIGHBUSH BLUEBERRY	43	24"-30" HT.	#3/5 CONT.	6'-12' HT.
VL	VIBURNUM LENTAGO NANNYBERRY	35	24"-30" HT.	#3/5 CONT.	15'-20' HT.
VT	VIBURNUM TRILOBUM AMERICAN CRANBERRY	56	24"-30" HT.	#3/5 CONT.	8'-10' HT.

UNDER NEW YORK STATE EDUCATION LAW ARTICLE 145 (ENGINEERING), SECTION 7209 (2), IT IS A VIOLATION OF THE LAW FOR ANY PERSON, UNLESS ACTING UNDER THE DIRECTION OF A LICENSED PROFESSIONAL ENGINEER, TO ALTER THIS DOCUMENT.

PRELIMINARY
NOT FOR CONSTRUCTION



PREPARED FOR:

700 Universe Blvd.
Juno Beach, FL 33408

TRC 4900 RITTER ROAD
MECHANICSBURG, PA

TRC PROJECT NO: 276517.4552

REV	DESCRIPTION	DATE	DES	CHK	APP

MR DESIGNED	PRELIMINARY LANDSCAPE PLAN EXCELSIOR SOLAR ENERGY CENTER, LLC LANDSCAPE MITIGATION TYPE 2 TEMPLATE & SCHEDULES TOWN OF BYRON GENESEE COUNTY, NY		L2.06	REV. A
TKM DRAWN				
MR CHECKED				
MR APPROVED				
REVIEW 1	08/2020 DATE	AS NOTED SCALE		
REVIEW 2				

LEGEND - VM27

LANDSCAPE PLANTING SCHEDULE

PLANTING TEMPLATE TYPE 2

TOTAL MITIGATION LENGTH = 1,335 LF

DECIDUOUS AND EVERGREEN TREES

SYMBOL	BOTANICAL NAME/ COMMON PLANT NAME	QUANTITY	SIZE	ROOT	MATURE HEIGHT
AA	AMELANCHIER ARBOREA DOWNY SHADBUSH	18	6'-8' HT. CLUMP	B&B	15'-20' HT.
CF	CORNUS FLORIDA FLOWERING DOGWOOD	13	2" CAL. MIN.	B&B	15'-25' HT.
JV	JUNIPERUS VIRGINIANA EASTERN RED CEDAR	54	5'-6' HT.	B&B	40'-50' HT.
PG	PICEA GLAUCA WHITE SPRUCE	35	5'-6' HT.	B&B	40'-60' HT.
PP	PICEA PUNGENS BLUE SPRUCE	27	2" CAL. MIN.	B&B	50'-70' HT.

SHRUBS

SYMBOL	BOTANICAL NAME/ COMMON PLANT NAME	QUANTITY	SIZE	ROOT	MATURE HEIGHT
AR	ARONIA ARBUTIFOLIA RED CHOKEBERRY	17	24"-30" HT.	#3/5 CONT.	7'-10' HT.
CS	CORNUS SERICEA RED TWIG DOGWOOD	36	24"-30" HT.	#3/5 CONT.	7'-9' HT.
HV	HAMAMELIS VIRGINIANA COMMON WITCH HAZEL	22	3'-4' HT.	B&B	15'-25' HT.
VC	VACCINIUM CORYMBOSUM HIGHBUSH BLUEBERRY	26	24"-30" HT.	#3/5 CONT.	6'-12' HT.
VL	VIBURNUM LENTAGO NANNYBERRY	22	24"-30" HT.	#3/5 CONT.	15'-20' HT.
VT	VIBURNUM TRILOBUM AMERICAN CRANBERRY	37	24"-30" HT.	#3/5 CONT.	8'-10' HT.

LEGEND - TYPE 2 TOTALS

LANDSCAPE PLANTING SCHEDULE

VISUAL MITIGATION PLANTING TEMPLATE TYPE 2

DECIDUOUS AND EVERGREEN TREES

SYMBOL	BOTANICAL NAME/ COMMON PLANT NAME	QUANTITY	SIZE	ROOT	MATURE HEIGHT
AA	AMELANCHIER ARBOREA DOWNY SHADBUSH	302	6'-8' HT. CLUMP	B&B	15'-20' HT.
CF	CORNUS FLORIDA FLOWERING DOGWOOD	217	2" CAL. MIN.	B&B	15'-25' HT.
JV	JUNIPERUS VIRGINIANA EASTERN RED CEDAR	878	5'-6' HT.	B&B	40'-50' HT.
PG	PICEA GLAUCA WHITE SPRUCE	586	5'-6' HT.	B&B	40'-60' HT.
PP	PICEA PUNGENS BLUE SPRUCE	441	2" CAL. MIN.	B&B	50'-70' HT.

SHRUBS

SYMBOL	BOTANICAL NAME/ COMMON PLANT NAME	QUANTITY	SIZE	ROOT	MATURE HEIGHT
AR	ARONIA ARBUTIFOLIA RED CHOKEBERRY	281	24"-30" HT.	#3/5 CONT.	7'-10' HT.
CS	CORNUS SERICEA RED TWIG DOGWOOD	545	24"-30" HT.	#3/5 CONT.	7'-9' HT.
HV	HAMAMELIS VIRGINIANA COMMON WITCH HAZEL	362	3'-4' HT.	B&B	15'-25' HT.
VC	VACCINIUM CORYMBOSUM HIGHBUSH BLUEBERRY	442	24"-30" HT.	#3/5 CONT.	6'-12' HT.
VL	VIBURNUM LENTAGO NANNYBERRY	358	24"-30" HT.	#3/5 CONT.	15'-20' HT.
VT	VIBURNUM TRILOBUM AMERICAN CRANBERRY	582	24"-30" HT.	#3/5 CONT.	8'-10' HT.

UNDER NEW YORK STATE EDUCATION LAW ARTICLE 145 (ENGINEERING), SECTION 7209 (2), IT IS A VIOLATION OF THE LAW FOR ANY PERSON, UNLESS ACTING UNDER THE DIRECTION OF A LICENSED PROFESSIONAL ENGINEER, TO ALTER THIS DOCUMENT.



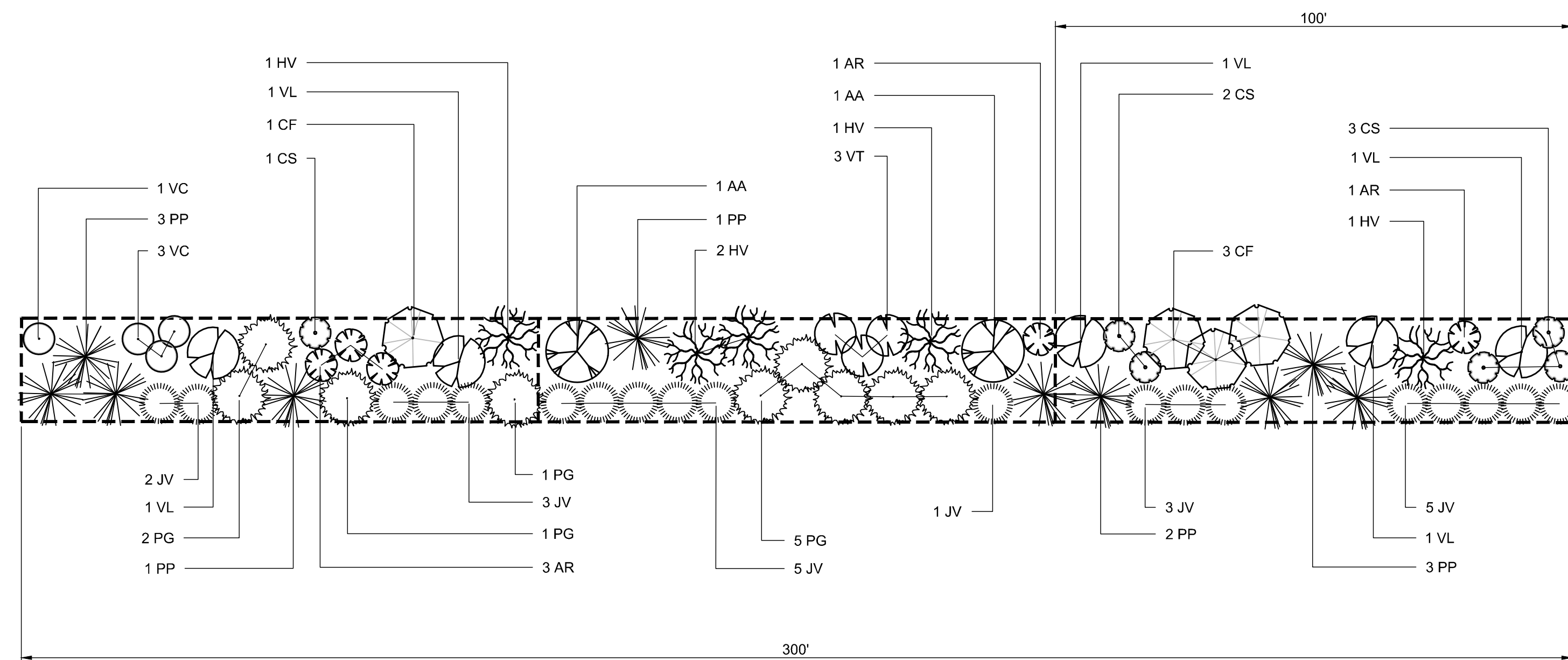
PRELIMINARY
NOT FOR CONSTRUCTION

PREPARED FOR:

700 Universe Blvd.
Juno Beach, FL 33408

4900 RITTER ROAD MECHANICSBURG, PA TRC PROJECT NO: 276517.4552						
REV	DESCRIPTION	DATE	DES	CHK	APP	

MR DESIGNED TKM DRAWN MR CHECKED MR APPROVED	PRELIMINARY LANDSCAPE PLAN EXCELSIOR SOLAR ENERGY CENTER, LLC LANDSCAPE MITIGATION TYPE 2 TEMPLATE & SCHEDULES TOWN OF BYRON GENESEE COUNTY, NY		L2.07	REV. A
REVIEW 1 REVIEW 2	08/2020 DATE AS NOTED SCALE	TRC	L2.07	A



PLANTING TEMPLATE TYPE 3

LEGEND

VISUAL MITIGATION PLANTING TEMPLATE - TYPE 3
LANDSCAPE PLANTING SCHEDULE (MAXIMUM VISUAL BUFFER/SCREENING EFFORT)

DECIDUOUS AND EVERGREEN TREES

SYMBOL	BOTANICAL NAME/ COMMON PLANT NAME	QUANTITY	SIZE	ROOT	MATURE HEIGHT
AA	AMELANCHIER ARBOREA DOWNY SHADBUSH	2	6'-8' HT. CLUMP	B&B	15'-20' HT.
CF	CORNUS FLORIDA FLOWERING DOGWOOD	4	2" CAL. MIN.	B&B	15'-25' HT.
JV	JUNIPERUS VIRGINIANA EASTERN RED CEDAR	19	5'-6' HT.	B&B	40'-50' HT.
PG	PICEA GLAUCA WHITE SPRUCE	9	5'-6' HT.	B&B	40'-60' HT.
PP	PICEA PUNGENS BLUE SPRUCE	10	2" CAL. MIN.	B&B	50'-70' HT.

SHRUBS

SYMBOL	BOTANICAL NAME/ COMMON PLANT NAME	QUANTITY	SIZE	ROOT	MATURE HEIGHT
AR	ARONIA ARBUTIFOLIA RED CHOKEBERRY	5	24"-30" HT.	#3/5 CONT.	7'-10' HT.
CS	CORNUS SERICEA RED TWIG DOGWOOD	6	24"-30" HT.	#3/5 CONT.	7'-9' HT.
HV	HAMAMELIS VIRGINIANA COMMON WITCH HAZEL	5	3'-4' HT.	B&B	15'-25' HT.
VC	VACCINIUM CORYMBOSUM HIGHBUSH BLUEBERRY	4	24"-30" HT.	#3/5 CONT.	6'-12' HT.
VL	VIBURNUM LENTAGO NANNYBERRY	5	24"-30" HT.	#3/5 CONT.	15'-20' HT.
VT	VIBURNUM TRILOBUM AMERICAN CRANBERRY	3	24"-30" HT.	#3/5 CONT.	8'-10' HT.

LEGEND - VM9

LANDSCAPE PLANTING SCHEDULE

PLANTING TEMPLATE TYPE 3
TOTAL MITIGATION LENGTH = 2,575 LF

DECIDUOUS AND EVERGREEN TREES

SYMBOL	BOTANICAL NAME/ COMMON PLANT NAME	QUANTITY	SIZE	ROOT	MATURE HEIGHT
AA	AMELANCHIER ARBOREA DOWNY SHADBUSH	17	6'-8' HT. CLUMP	B&B	15'-20' HT.
CF	CORNUS FLORIDA FLOWERING DOGWOOD	33	2" CAL. MIN.	B&B	15'-25' HT.
JV	JUNIPERUS VIRGINIANA EASTERN RED CEDAR	162	5'-6' HT.	B&B	40'-50' HT.
PG	PICEA GLAUCA WHITE SPRUCE	80	5'-6' HT.	B&B	40'-60' HT.
PP	PICEA PUNGENS BLUE SPRUCE	85	2" CAL. MIN.	B&B	50'-70' HT.

SHRUBS

SYMBOL	BOTANICAL NAME/ COMMON PLANT NAME	QUANTITY	SIZE	ROOT	MATURE HEIGHT
AR	ARONIA ARBUTIFOLIA RED CHOKEBERRY	43	24"-30" HT.	#3/5 CONT.	7'-10' HT.
CS	CORNUS SERICEA RED TWIG DOGWOOD	49	24"-30" HT.	#3/5 CONT.	7'-9' HT.
HV	HAMAMELIS VIRGINIANA COMMON WITCH HAZEL	43	3'-4' HT.	B&B	15'-25' HT.
VC	VACCINIUM CORYMBOSUM HIGHBUSH BLUEBERRY	36	24"-30" HT.	#3/5 CONT.	6'-12' HT.
VL	VIBURNUM LENTAGO NANNYBERRY	42	24"-30" HT.	#3/5 CONT.	15'-20' HT.
VT	VIBURNUM TRILOBUM AMERICAN CRANBERRY	27	24"-30" HT.	#3/5 CONT.	8'-10' HT.

LEGEND - VM11

LANDSCAPE PLANTING SCHEDULE

PLANTING TEMPLATE TYPE 3
TOTAL MITIGATION LENGTH = 1,300 LF

DECIDUOUS AND EVERGREEN TREES

SYMBOL	BOTANICAL NAME/ COMMON PLANT NAME	QUANTITY	SIZE	ROOT	MATURE HEIGHT
AA	AMELANCHIER ARBOREA DOWNY SHADBUSH	8	6'-8' HT. CLUMP	B&B	15'-20' HT.
CF	CORNUS FLORIDA FLOWERING DOGWOOD	17	2" CAL. MIN.	B&B	15'-25' HT.
JV	JUNIPERUS VIRGINIANA EASTERN RED CEDAR	81	5'-6' HT.	B&B	40'-50' HT.
PG	PICEA GLAUCA WHITE SPRUCE	40	5'-6' HT.	B&B	40'-60' HT.
PP	PICEA PUNGENS BLUE SPRUCE	44	2" CAL. MIN.	B&B	50'-70' HT.

SHRUBS

SYMBOL	BOTANICAL NAME/ COMMON PLANT NAME	QUANTITY	SIZE	ROOT	MATURE HEIGHT
AR	ARONIA ARBUTIFOLIA RED CHOKEBERRY	23	24"-30" HT.	#3/5 CONT.	7'-10' HT.
CS	CORNUS SERICEA RED TWIG DOGWOOD	25	24"-30" HT.	#3/5 CONT.	7'-9' HT.
HV	HAMAMELIS VIRGINIANA COMMON WITCH HAZEL	21	3'-4' HT.	B&B	15'-25' HT.
VC	VACCINIUM CORYMBOSUM HIGHBUSH BLUEBERRY	20	24"-30" HT.	#3/5 CONT.	6'-12' HT.
VL	VIBURNUM LENTAGO NANNYBERRY	22	24"-30" HT.	#3/5 CONT.	15'-20' HT.
VT	VIBURNUM TRILOBUM AMERICAN CRANBERRY	12	24"-30" HT.	#3/5 CONT.	8'-10' HT.

LEGEND - VM12

LANDSCAPE PLANTING SCHEDULE

PLANTING TEMPLATE TYPE 3
TOTAL MITIGATION LENGTH = 1,130 LF

DECIDUOUS AND EVERGREEN TREES

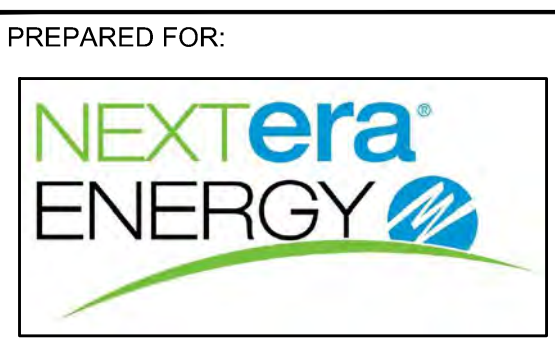
SYMBOL	BOTANICAL NAME/ COMMON PLANT NAME	QUANTITY	SIZE	ROOT	MATURE HEIGHT
AA	AMELANCHIER ARBOREA DOWNY SHADBUSH	8	6'-8' HT. CLUMP	B&B	15'-20' HT.
CF	CORNUS FLORIDA FLOWERING DOGWOOD	14	2" CAL. MIN.	B&B	15'-25' HT.
JV	JUNIPERUS VIRGINIANA EASTERN RED CEDAR	70	5'-6' HT.	B&B	40'-50' HT.
PG	PICEA GLAUCA WHITE SPRUCE	36	5'-6' HT.	B&B	40'-60' HT.
PP	PICEA PUNGENS BLUE SPRUCE	37	2" CAL. MIN.	B&B	50'-70' HT.

SHRUBS

SYMBOL	BOTANICAL NAME/ COMMON PLANT NAME	QUANTITY	SIZE	ROOT	MATURE HEIGHT
AR	ARONIA ARBUTIFOLIA RED CHOKEBERRY	19	24"-30" HT.	#3/5 CONT.	7'-10' HT.
CS	CORNUS SERICEA RED TWIG DOGWOOD	21	24"-30" HT.	#3/5 CONT.	7'-9' HT.
HV	HAMAMELIS VIRGINIANA COMMON WITCH HAZEL	19	3'-4' HT.	B&B	15'-25' HT.
VC	VACCINIUM CORYMBOSUM HIGHBUSH BLUEBERRY	16	24"-30" HT.	#3/5 CONT.	6'-12' HT.
VL	VIBURNUM LENTAGO NANNYBERRY	18	24"-30" HT.	#3/5 CONT.	15'-20' HT.
VT	VIBURNUM TRILOBUM AMERICAN CRANBERRY	12	24"-30" HT.	#3/5 CONT.	8'-10' HT.

UNDER NEW YORK STATE EDUCATION LAW ARTICLE 145 (ENGINEERING), SECTION 7209 (2), IT IS A VIOLATION OF THE LAW FOR ANY PERSON, UNLESS ACTING UNDER THE DIRECTION OF A LICENSED PROFESSIONAL ENGINEER, TO ALTER THIS DOCUMENT.

PRELIMINARY
NOT FOR CONSTRUCTION



700 Universe Blvd.
Juno Beach, FL 33408



4900 RITTER ROAD
MECHANICSBURG, PA

TRC PROJECT NO: 276517.4552

REV	DESCRIPTION	DATE	DES	CHK	APP

MR
DESIGNED
TKM
DRAWN
MR
CHECKED
MR
APPROVED

PRELIMINARY
LANDSCAPE PLAN
EXCELSIOR SOLAR ENERGY CENTER, LLC
LANDSCAPE MITIGATION TYPE 3 TEMPLATE & SCHEDULES
TOWN OF BYRON GENESEE COUNTY, NY

REVIEW 1
REVIEW 2

08/2020
DATE
AS NOTED
SCALE



L2.08

REV.
A

LEGEND - VM13

LANDSCAPE PLANTING SCHEDULE

PLANTING TEMPLATE TYPE 3
TOTAL MITIGATION LENGTH = 70 LF

DECIDUOUS AND EVERGREEN TREES

SYMBOL	BOTANICAL NAME/ COMMON PLANT NAME	QUANTITY	SIZE	ROOT	MATURE HEIGHT
AA	AMELANCHIER ARBOREA DOWNY SHADBUSH	0	6'-8' HT. CLUMP	B&B	15'-20' HT.
CF	CORNUS FLORIDA FLOWERING DOGWOOD	0	2" CAL. MIN.	B&B	15'-25' HT.
JV	JUNIPERUS VIRGINIANA EASTERN RED CEDAR	2	5'-6' HT.	B&B	40'-50' HT.
PG	PICEA GLAUCA WHITE SPRUCE	2	5'-6' HT.	B&B	40'-60' HT.
PP	PICEA PUNGENS BLUE SPRUCE	4	2" CAL. MIN.	B&B	50'-70' HT.

SHRUBS

SYMBOL	BOTANICAL NAME/ COMMON PLANT NAME	QUANTITY	SIZE	ROOT	MATURE HEIGHT
AR	ARONIA ARBUTIFOLIA RED CHOKEBERRY	3	24"-30" HT.	#3/5 CONT.	7'-10' HT.
CS	CORNUS SERICEA RED TWIG DOGWOOD	1	24"-30" HT.	#3/5 CONT.	7'-9' HT.
HV	HAMAMELIS VIRGINIANA COMMON WITCH HAZEL	0	3'-4' HT.	B&B	15'-25' HT.
VC	VACCINIUM CORYMBOSUM HIGHBUSH BLUEBERRY	4	24"-30" HT.	#3/5 CONT.	6'-12' HT.
VL	VIBURNUM LENTAGO NANNYBERRY	1	24"-30" HT.	#3/5 CONT.	15'-20' HT.
VT	VIBURNUM TRILOBUM AMERICAN CRANBERRY	0	24"-30" HT.	#3/5 CONT.	8'-10' HT.

LEGEND - VM14

LANDSCAPE PLANTING SCHEDULE

PLANTING TEMPLATE TYPE 3
TOTAL MITIGATION LENGTH = 825 LF

DECIDUOUS AND EVERGREEN TREES

SYMBOL	BOTANICAL NAME/ COMMON PLANT NAME	QUANTITY	SIZE	ROOT	MATURE HEIGHT
AA	AMELANCHIER ARBOREA DOWNY SHADBUSH	6	6'-8' HT. CLUMP	B&B	15'-20' HT.
CF	CORNUS FLORIDA FLOWERING DOGWOOD	10	2" CAL. MIN.	B&B	15'-25' HT.
JV	JUNIPERUS VIRGINIANA EASTERN RED CEDAR	51	5'-6' HT.	B&B	40'-50' HT.
PG	PICEA GLAUCA WHITE SPRUCE	27	5'-6' HT.	B&B	40'-60' HT.
PP	PICEA PUNGENS BLUE SPRUCE	27	2" CAL. MIN.	B&B	50'-70' HT.

SHRUBS

SYMBOL	BOTANICAL NAME/ COMMON PLANT NAME	QUANTITY	SIZE	ROOT	MATURE HEIGHT
AR	ARONIA ARBUTIFOLIA RED CHOKEBERRY	14	24"-30" HT.	#3/5 CONT.	7'-10' HT.
CS	CORNUS SERICEA RED TWIG DOGWOOD	15	24"-30" HT.	#3/5 CONT.	7'-9' HT.
HV	HAMAMELIS VIRGINIANA COMMON WITCH HAZEL	16	3'-4' HT.	B&B	15'-25' HT.
VC	VACCINIUM CORYMBOSUM HIGHBUSH BLUEBERRY	13	24"-30" HT.	#3/5 CONT.	6'-12' HT.
VL	VIBURNUM LENTAGO NANNYBERRY	13	24"-30" HT.	#3/5 CONT.	15'-20' HT.
VT	VIBURNUM TRILOBUM AMERICAN CRANBERRY	9	24"-30" HT.	#3/5 CONT.	8'-10' HT.

LEGEND - TYPE 3 TOTALS

LANDSCAPE PLANTING SCHEDULE

VISUAL MITIGATION PLANTING TEMPLATE TYPE 3

DECIDUOUS AND EVERGREEN TREES

SYMBOL	BOTANICAL NAME/ COMMON PLANT NAME	QUANTITY	SIZE	ROOT	MATURE HEIGHT
AA	AMELANCHIER ARBOREA DOWNY SHADBUSH	39	6'-8' HT. CLUMP	B&B	15'-20' HT.
CF	CORNUS FLORIDA FLOWERING DOGWOOD	74	2" CAL. MIN.	B&B	15'-25' HT.
JV	JUNIPERUS VIRGINIANA EASTERN RED CEDAR	366	5'-6' HT.	B&B	40'-50' HT.
PG	PICEA GLAUCA WHITE SPRUCE	113	5'-6' HT.	B&B	40'-60' HT.
PP	PICEA PUNGENS BLUE SPRUCE	197	2" CAL. MIN.	B&B	50'-70' HT.

SHRUBS

SYMBOL	BOTANICAL NAME/ COMMON PLANT NAME	QUANTITY	SIZE	ROOT	MATURE HEIGHT
AR	ARONIA ARBUTIFOLIA RED CHOKEBERRY	102	24"-30" HT.	#3/5 CONT.	7'-10' HT.
CS	CORNUS SERICEA RED TWIG DOGWOOD	111	24"-30" HT.	#3/5 CONT.	7'-9' HT.
HV	HAMAMELIS VIRGINIANA COMMON WITCH HAZEL	99	3'-4' HT.	B&B	15'-25' HT.
VC	VACCINIUM CORYMBOSUM HIGHBUSH BLUEBERRY	89	24"-30" HT.	#3/5 CONT.	6'-12' HT.
VL	VIBURNUM LENTAGO NANNYBERRY	96	24"-30" HT.	#3/5 CONT.	15'-20' HT.
VT	VIBURNUM TRILOBUM AMERICAN CRANBERRY	60	24"-30" HT.	#3/5 CONT.	8'-10' HT.

UNDER NEW YORK STATE EDUCATION LAW ARTICLE 145 (ENGINEERING), SECTION 7209 (2), IT IS A VIOLATION OF THE LAW FOR ANY PERSON, UNLESS ACTING UNDER THE DIRECTION OF A LICENSED PROFESSIONAL ENGINEER, TO ALTER THIS DOCUMENT.

PRELIMINARY
NOT FOR CONSTRUCTION



PREPARED FOR:

700 Universe Blvd,
Juno Beach, FL 33408

TRC 4900 RITTER ROAD
MECHANICSBURG, PA

TRC PROJECT NO: 276517.4552

REV	DESCRIPTION	DATE	DES	CHK	APP

MR DESIGNED	PRELIMINARY LANDSCAPE PLAN EXCELSIOR SOLAR ENERGY CENTER, LLC LANDSCAPE MITIGATION TYPE 3 TEMPLATE & SCHEDULES TOWN OF BYRON GENESEE COUNTY, NY		L2.09	REV.
TKM DRAWN				A
MR CHECKED				08/2020 DATE
MR APPROVED				AS NOTED SCALE