

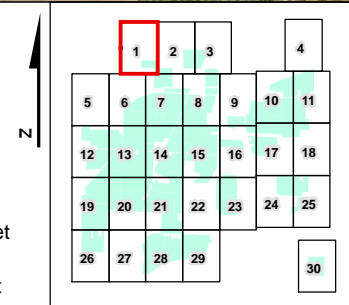
| | | | | |
|---|---|--|----------------------------|--|
| <ul style="list-style-type: none"> PROJECT FIGURE INDEX 500-FT BUFFER AROUND PROJECT MUNICIPAL BOUNDARY | <p>Proposed Facility Components</p> <ul style="list-style-type: none"> INTERCONNECTION LINES FENCE LIMITS OF DISTURBANCE SOLAR ARRAY ACCESS ROAD SUBSTATION/SWITCHYARD | <p>Plant Communities</p> <ul style="list-style-type: none"> ACTIVE AGRICULTURE DISTURBED/DEVELOPED FORESTLAND OPEN WATER OTHER SUCCESSIONAL OLD-FIELD SUCCESSIONAL SHRUBLAND WETLANDS PEM WETLANDS PFO WETLANDS PSS WETLANDS PUB | <p>MAP LOCATION</p> | <p>NEXTERA ENERGY RESOURCES</p> <p>PLANT COMMUNITIES WITHIN 500FT OF DISTURBANCE OVERVIEW EXCELSIOR ENERGY CENTER, LLC TOWN OF BYRON, GENESSEE COUNTY, NY</p> <p>FIGURE 22-2 SEPTEMBER 2020</p> <p>Map Produced by TRC</p> |
|---|---|--|----------------------------|--|



- Project Area
- Limit of Disturbance (LOD)
- 500-Ft Buffer Around Project Area
- Fencing
- PV Panel Array

- Plant Communities**
- Active Agriculture
 - Forestland
 - Open Water
 - Wetlands PEM
 - Wetlands PSS

1 inch = 300 feet
 0 150 300
 Feet



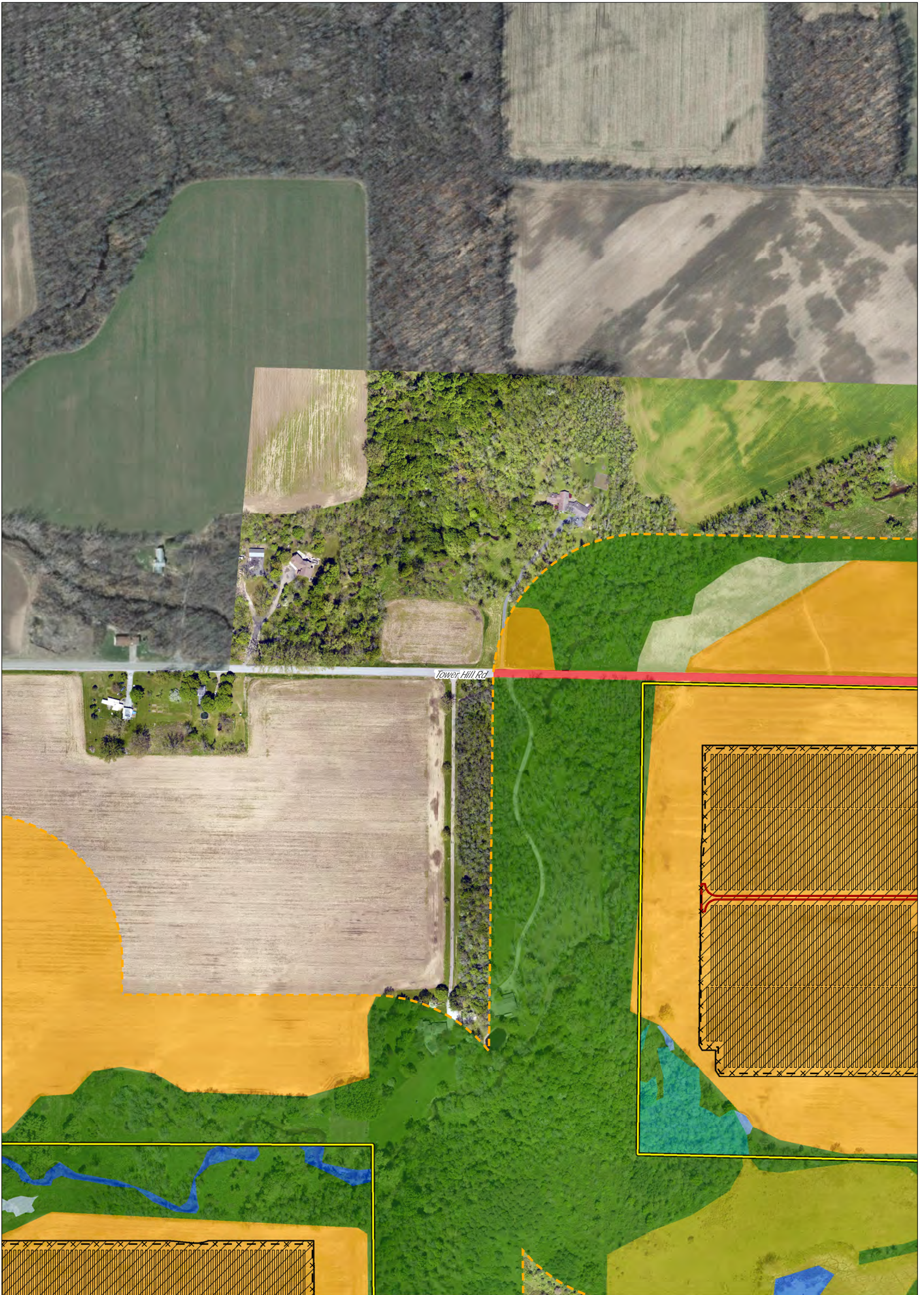
NEXTERA
ENERGY
RESOURCES

**PLANT COMMUNITIES
WITHIN 500FT OF DISTURBANCE
EXCELSIOR ENERGY CENTER, LLC
TOWN OF BYRON, NY**

SHEET 1 OF 30

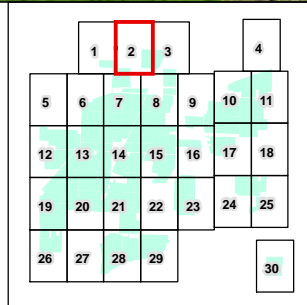
FIGURE 22-2 SEPTEMBER 2020

Map Produced by TRC



- Project Area
- Limit of Disturbance (LOD)
- 500-Ft Buffer Around Project Area
- Fencing
- PV Panel Array
- Access Road
- Inverter

- Plant Communities**
- Active Agriculture
 - Disturbed/Developed
 - Forestland
 - Open Water
 - Successional Old-Field
 - Successional Shrubland
 - Wetlands PEM
 - Wetlands PFO
- Wetlands PSS**
- Wetlands PSS
- 1 inch = 300 feet
0 150 300 Feet



NEXTERA
ENERGY
RESOURCES

**PLANT COMMUNITIES
WITHIN 500FT OF DISTURBANCE
EXCELSIOR ENERGY CENTER, LLC
TOWN OF BYRON, NY
SHEET 2 OF 30**

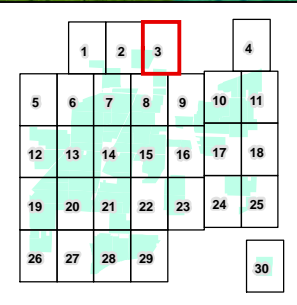
FIGURE 22-2 SEPTEMBER 2020

Map Produced by TRC



- Project Area
- Limit of Disturbance (LOD)
- 500-Ft Buffer Around Project Area
- Collection Lines
- Fencing
- Stormwater
- PV Panel Array
- Access Road
- Laydown Yard
- Inverter
- Riprap
- Parking Area

- Plant Communities**
- Active Agriculture
 - Disturbed/Developed
 - Forestland
 - Open Water
 - Successional Old-Field
 - Successional Shrubland
 - Wetlands PFO
- 1 inch = 300 feet
 0 150 300 Feet



NEXTERA
ENERGY RESOURCES

**PLANT COMMUNITIES
WITHIN 500FT OF DISTURBANCE
EXCELSIOR ENERGY CENTER, LLC
TOWN OF BYRON, NY
SHEET 3 OF 30**

FIGURE 22-2 SEPTEMBER 2020

Map Produced by TRC



Project Area
 500-Ft Buffer Around Project Area

Plant Communities

- Active Agriculture
- Disturbed/Developed
- Forestland
- Successional Old-Field
- Successional Shrubland

1 inch = 300 feet
 0 150 300 Feet



| | | | | | |
|----|----|----|----|----|----|
| | 1 | 2 | 3 | 4 | |
| 5 | 6 | 7 | 8 | 9 | 10 |
| 11 | 12 | 13 | 14 | 15 | 16 |
| 17 | 18 | 19 | 20 | 21 | 22 |
| 23 | 24 | 25 | 26 | 27 | 28 |
| 29 | 30 | | | | |

MAP LOCATION



**PLANT COMMUNITIES
 WITHIN 500FT OF DISTURBANCE
 EXCELSIOR ENERGY CENTER, LLC
 TOWN OF BYRON, NY
 SHEET 4 OF 30**

FIGURE 22-2 SEPTEMBER 2020

Map Produced by TRC



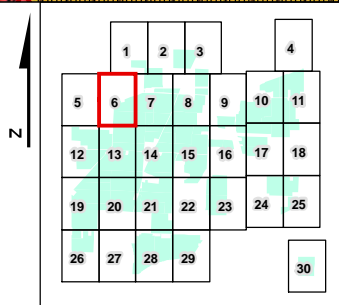
| | | | | | | | | | | | | | | | | | | | | | | | | | | | | | | | | | | | |
|---|--|----|----|---|---|---|---|---|---|---|----|----|----|----|----|----|----|----|----|----|----|----|----|----|----|----|----|----|----|----|----|--|--|--|---|
| <p> 500-Ft Buffer Around Project Area</p> <p>Plant Communities</p> <ul style="list-style-type: none"> Active Agriculture Disturbed/Developed Forestland Open Water Successional Old-Field Successional Shrubland <p style="text-align: right;">1 inch = 300 feet</p> <p style="text-align: center;">0 150 300</p> <p style="text-align: center;"> Feet</p> | <p style="text-align: center;">N</p> <table border="1" style="width: 100%; text-align: center;"> <tr><td>1</td><td>2</td><td>3</td><td>4</td></tr> <tr><td>5</td><td>6</td><td>7</td><td>8</td></tr> <tr><td>9</td><td>10</td><td>11</td><td>12</td></tr> <tr><td>13</td><td>14</td><td>15</td><td>16</td></tr> <tr><td>17</td><td>18</td><td>19</td><td>20</td></tr> <tr><td>21</td><td>22</td><td>23</td><td>24</td></tr> <tr><td>25</td><td>26</td><td>27</td><td>28</td></tr> <tr><td>29</td><td>30</td><td></td><td></td></tr> </table> | 1 | 2 | 3 | 4 | 5 | 6 | 7 | 8 | 9 | 10 | 11 | 12 | 13 | 14 | 15 | 16 | 17 | 18 | 19 | 20 | 21 | 22 | 23 | 24 | 25 | 26 | 27 | 28 | 29 | 30 | | | <p style="text-align: center;">MAP LOCATION</p> | <p style="text-align: center;"></p> <p style="text-align: center;">PLANT COMMUNITIES WITHIN 500FT OF DISTURBANCE</p> <p style="text-align: center;">EXCELSIOR ENERGY CENTER, LLC TOWN OF BYRON, NY</p> <p style="text-align: center;">SHEET 5 OF 30</p> <p style="text-align: center;">FIGURE 22-2 SEPTEMBER 2020</p> <p style="text-align: center;">Map Produced by </p> |
| 1 | 2 | 3 | 4 | | | | | | | | | | | | | | | | | | | | | | | | | | | | | | | | |
| 5 | 6 | 7 | 8 | | | | | | | | | | | | | | | | | | | | | | | | | | | | | | | | |
| 9 | 10 | 11 | 12 | | | | | | | | | | | | | | | | | | | | | | | | | | | | | | | | |
| 13 | 14 | 15 | 16 | | | | | | | | | | | | | | | | | | | | | | | | | | | | | | | | |
| 17 | 18 | 19 | 20 | | | | | | | | | | | | | | | | | | | | | | | | | | | | | | | | |
| 21 | 22 | 23 | 24 | | | | | | | | | | | | | | | | | | | | | | | | | | | | | | | | |
| 25 | 26 | 27 | 28 | | | | | | | | | | | | | | | | | | | | | | | | | | | | | | | | |
| 29 | 30 | | | | | | | | | | | | | | | | | | | | | | | | | | | | | | | | | | |



- Project Area
- Limit of Disturbance (LOD)
- 500-Ft Buffer Around Project Area
- Collection Lines
- Fencing
- PV Panel Array
- Access Road
- Battery Pack
- Inverter

- Plant Communities**
- Active Agriculture
 - Disturbed/Developed
 - Forestland
 - Successional Shrubland
 - Wetlands PFO

1 inch = 300 feet
 0 150 300 Feet

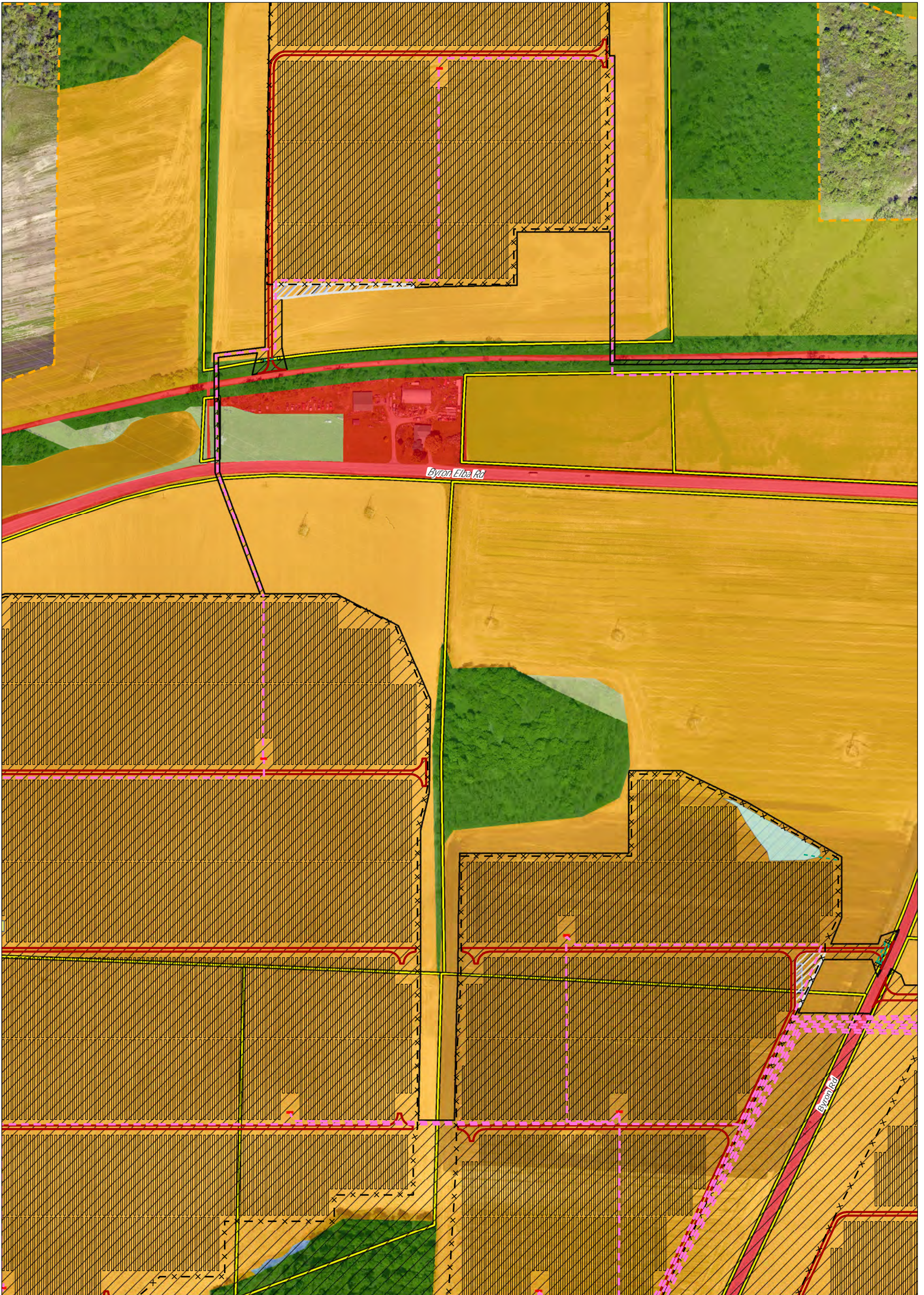


NEXTERA
ENERGY RESOURCES

**PLANT COMMUNITIES
WITHIN 500FT OF DISTURBANCE
EXCELSIOR ENERGY CENTER, LLC
TOWN OF BYRON, NY
SHEET 6 OF 30**

FIGURE 22-2 SEPTEMBER 2020

Map Produced by TRC

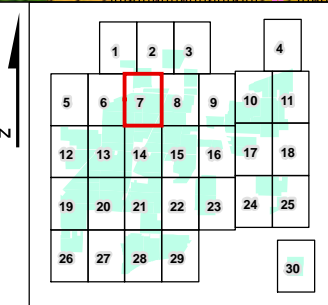


- Project Area
- Limit of Disturbance (LOD)
- 500-Ft Buffer Around Project Area
- Collection Lines
- Fencing
- Stormwater
- PV Panel Array
- Access Road
- Battery Pack
- Filtration Basins

- Lawndown Yard
- Inverter
- Riprap
- Parking Area

- Plant Communities**
- Active Agriculture
 - Disturbed/Developed
 - Forestland
 - Successional Old-Field
 - Successional Shrubland
 - Wetlands PEM

1 inch = 300 feet
 0 150 300 Feet



NEXTERA ENERGY RESOURCES

PLANT COMMUNITIES WITHIN 500FT OF DISTURBANCE
EXCELSIOR ENERGY CENTER, LLC
TOWN OF BYRON, NY
SHEET 7 OF 30

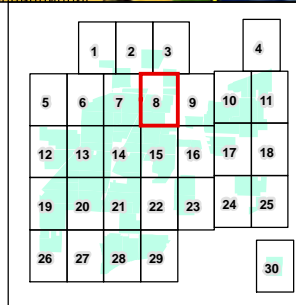
FIGURE 22-2 SEPTEMBER 2020

Map Produced by **TRC**



- Project Area
- Limit of Disturbance (LOD)
- 500-Ft Buffer Around Project Area
- Interconnection Lines
- Collection Lines
- Fencing
- PV Panel Array
- Substation/Switchyard
- Access Road
- Inverter

- Plant Communities**
- Active Agriculture
 - Disturbed/Developed
 - Forestland
 - Open Water
 - Successional Old-Field
 - Successional Shrubland
 - Wetlands PEM
 - Wetlands PFO
- Wetlands**
- Wetlands PSS
 - Wetlands PUB
- 1 inch = 300 feet
0 150 300 Feet

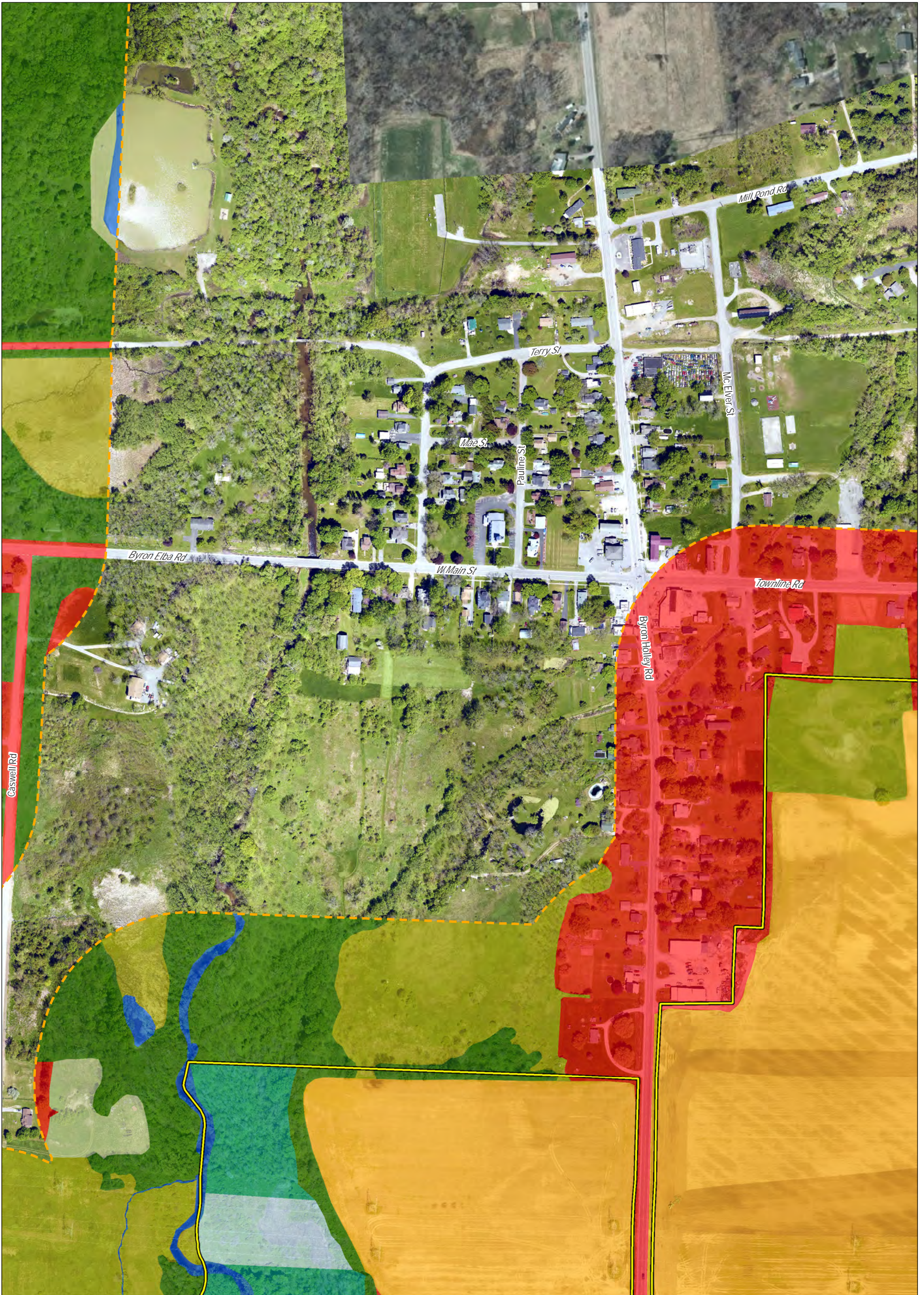


NEXTERA
ENERGY RESOURCES

**PLANT COMMUNITIES
WITHIN 500FT OF DISTURBANCE
EXCELSIOR ENERGY CENTER, LLC
TOWN OF BYRON, NY
SHEET 8 OF 30**

FIGURE 22-2 SEPTEMBER 2020

Map Produced by TRC



Project Area
 500-Ft Buffer Around Project Area

Plant Communities

- Active Agriculture
- Disturbed/Developed
- Forestland
- Open Water
- Successional Old-Field
- Successional Shrubland
- Wetlands PFO
- Wetlands PSS

1 inch = 300 feet

0 150 300 Feet

N

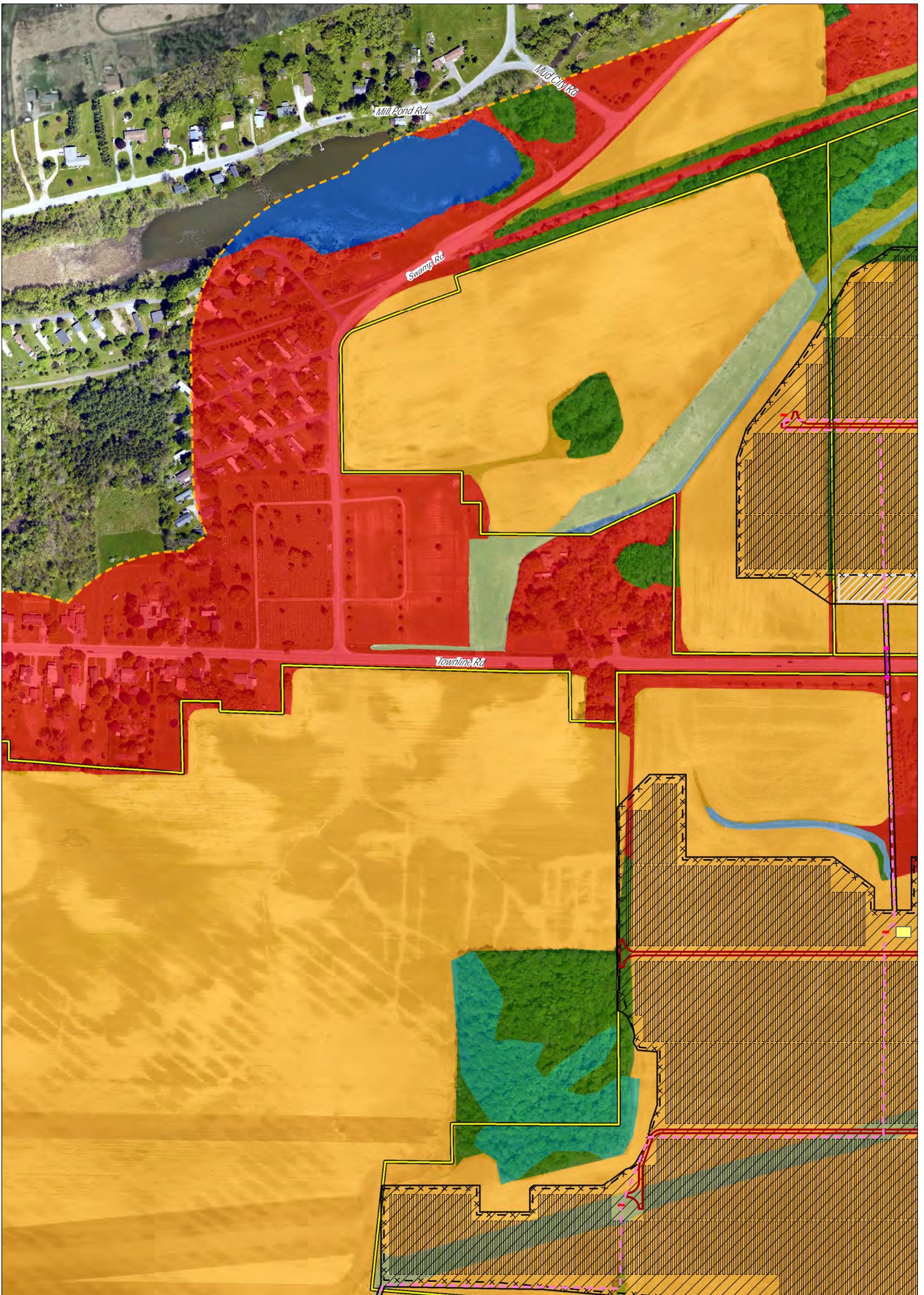
| | | | | | | |
|----|----|----|----|----|----|----|
| | 1 | 2 | 3 | 4 | | |
| 5 | 6 | 7 | 8 | 9 | 10 | 11 |
| 12 | 13 | 14 | 15 | 16 | 17 | 18 |
| 19 | 20 | 21 | 22 | 23 | 24 | 25 |
| 26 | 27 | 28 | 29 | | | 30 |

MAP LOCATION

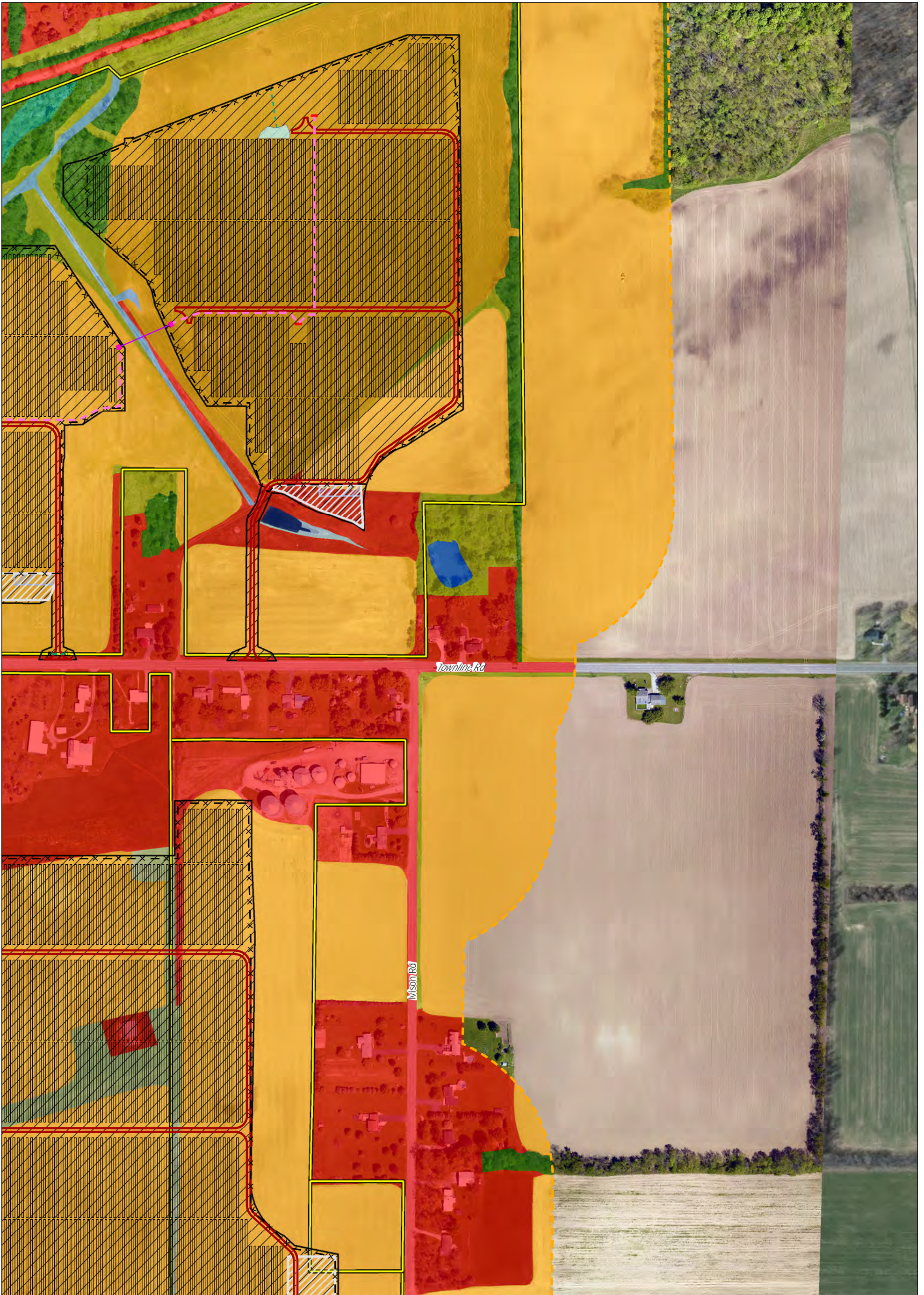
New York

PLANT COMMUNITIES WITHIN 500FT OF DISTURBANCE
EXCELSIOR ENERGY CENTER, LLC
 TOWN OF BYRON, NY
 SHEET 9 OF 30

FIGURE 22-2 SEPTEMBER 2020
 Map Produced by

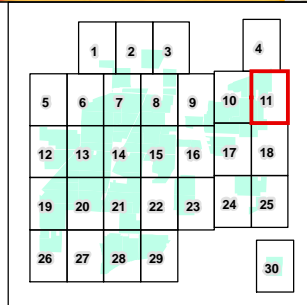


| | | | | | |
|--|--|---|--|----------------------------|--|
| <ul style="list-style-type: none"> Project Area Limit of Disturbance (LOD) 500-Ft Buffer Around Project Area Collection Lines HDD Lines Fencing PV Panel Array Access Road Battery Pack Lawdown Yard | <ul style="list-style-type: none"> Inverter HDD Bore Pit | <p>Plant Communities</p> <ul style="list-style-type: none"> Active Agriculture Disturbed/Developed Forestland Open Water Successional Old-Field Successional Shrubland Wetlands PEM Wetlands PFO | <p>1 inch = 300 feet</p> <p>0 150 300 Feet</p> | <p>MAP LOCATION</p> | <p>NEXTERA ENERGY RESOURCES</p> <p>PLANT COMMUNITIES WITHIN 500FT OF DISTURBANCE</p> <p>EXCELSIOR ENERGY CENTER, LLC TOWN OF BYRON, NY</p> <p>SHEET 10 OF 30</p> <p>FIGURE 22-2 SEPTEMBER 2020</p> <p>Map Produced by TRC</p> |
|--|--|---|--|----------------------------|--|



| | | | |
|-----------------------------------|---------------------|--------------------------|--------------|
| Project Area | Lawndown Yard | Plant Communities | Wetlands PSS |
| Limit of Disturbance (LOD) | Disturbed/Developed | Active Agriculture | Wetlands PUB |
| 500-Ft Buffer Around Project Area | HDD Bore Pit | Forestland | |
| Collection Lines | Riprap | Open Water | |
| HDD Lines | Parking Area | Successional Old-Field | |
| Fencing | | Wetlands PEM | |
| Stormwater | | Wetlands PFO | |
| PV Panel Array | | | |
| Access Road | | | |
| Filtration Basins | | | |

1 inch = 300 feet
0 150 300 Feet

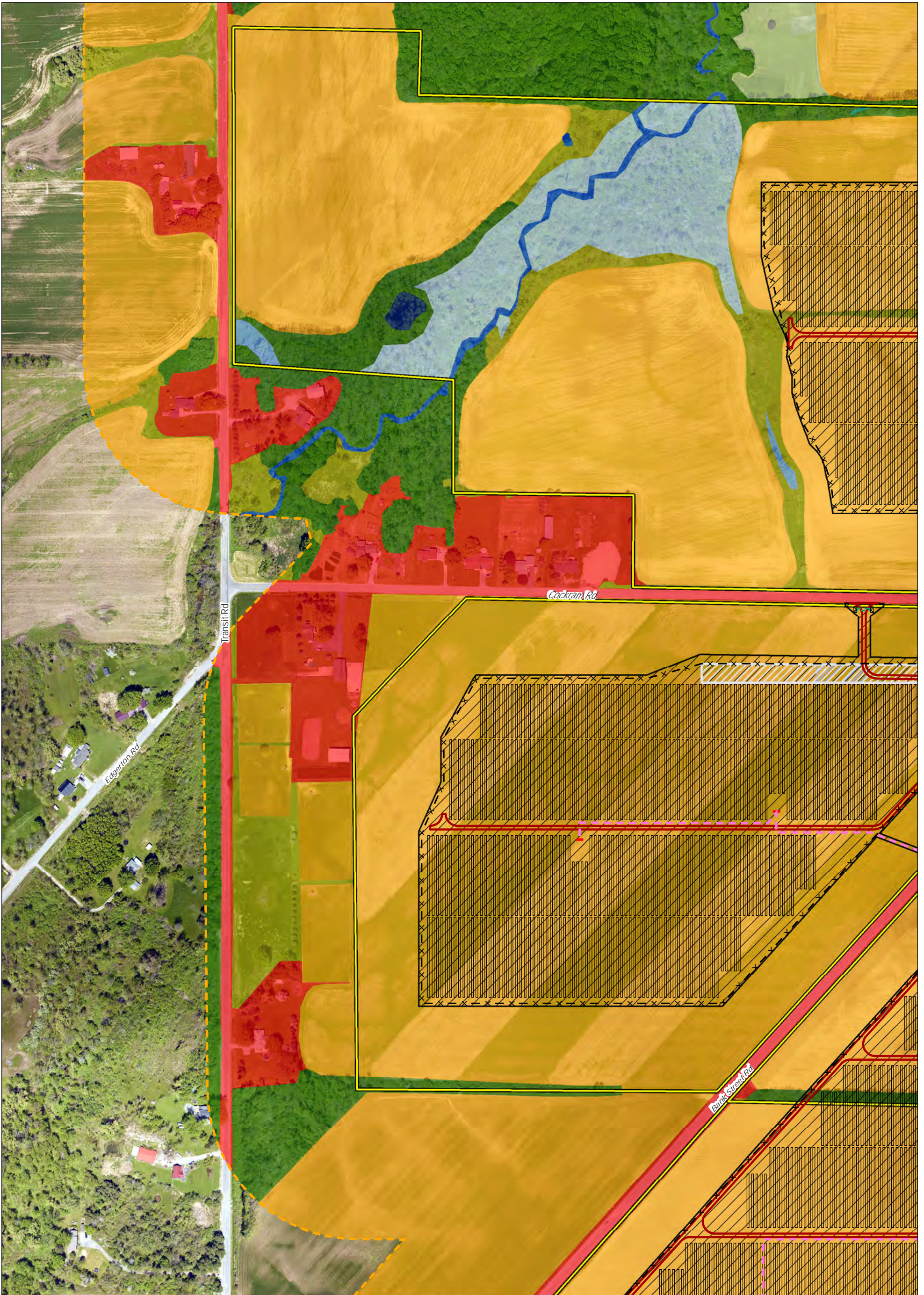


NEXTERA
ENERGY
RESOURCES

**PLANT COMMUNITIES
WITHIN 500FT OF DISTURBANCE
EXCELSIOR ENERGY CENTER, LLC
TOWN OF BYRON, NY
SHEET 11 OF 30**

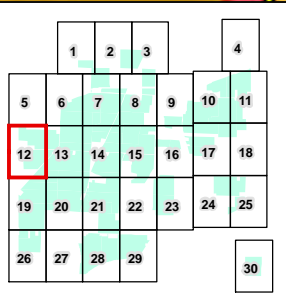
FIGURE 22-2 SEPTEMBER 2020

Map Produced by TRC



- Project Area
- Limit of Disturbance (LOD)
- 500-Ft Buffer Around Project Area
- Collection Lines
- Fencing
- Stormwater
- PV Panel Array
- Access Road
- Laydown Yard
- Inverter
- Riprap
- Parking Area

- Plant Communities**
- Active Agriculture
 - Disturbed/Developed
 - Forestland
 - Open Water
 - Successional Old-Field
 - Successional Shrubland
 - Wetlands PEM
 - Wetlands PFO
- Wetlands PSS**
- Wetlands PSS
 - Wetlands PUB
- 1 inch = 300 feet
- 0 150 300 Feet



NEXTERA
ENERGY
RESOURCES

**PLANT COMMUNITIES
WITHIN 500FT OF DISTURBANCE
EXCELSIOR ENERGY CENTER, LLC
TOWN OF BYRON, NY**

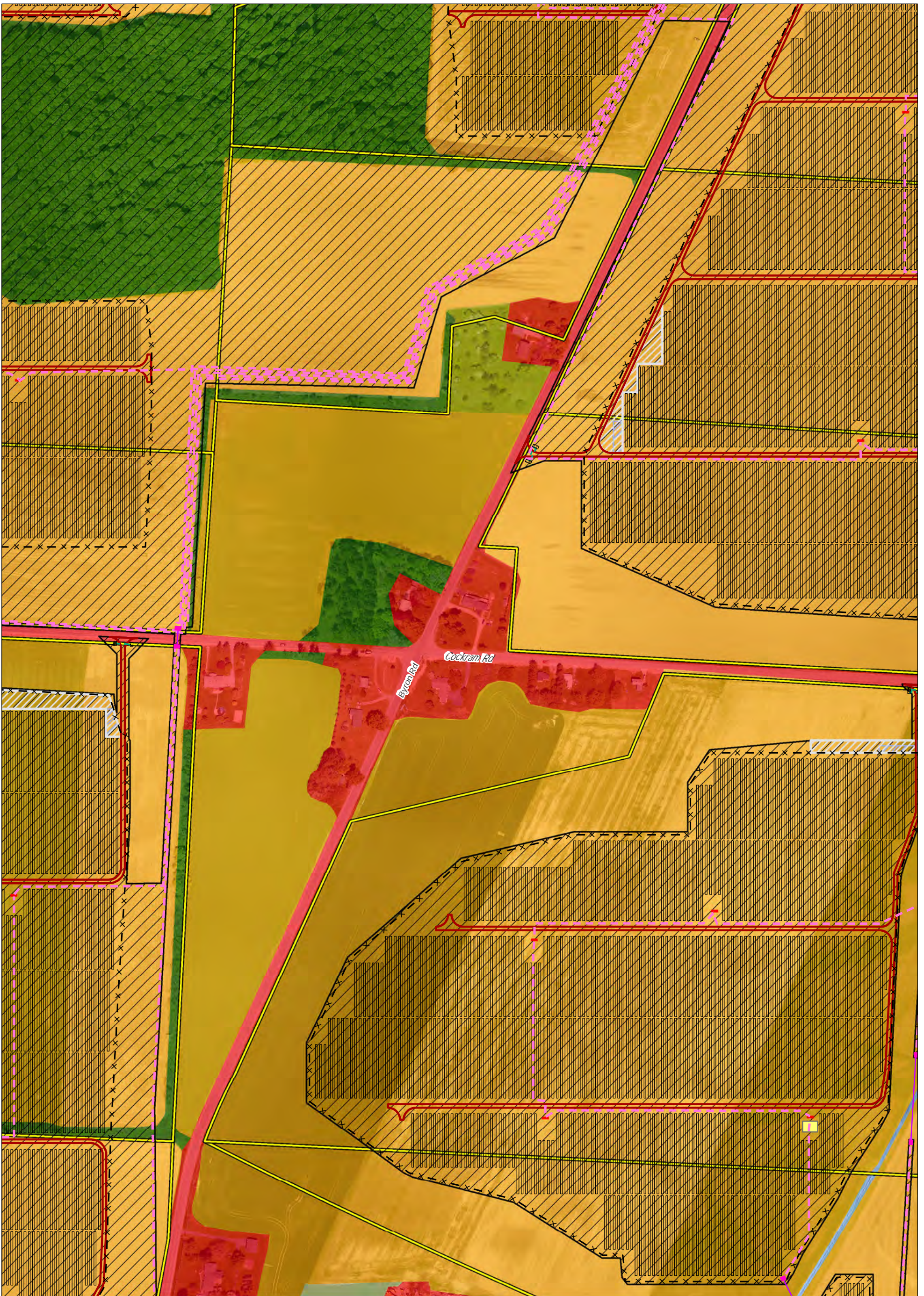
SHEET 12 OF 30

FIGURE 22-2 SEPTEMBER 2020

Map Produced by TRC



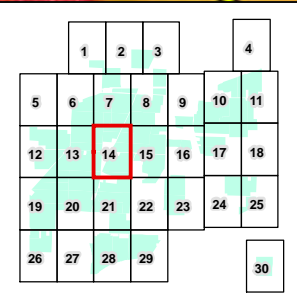
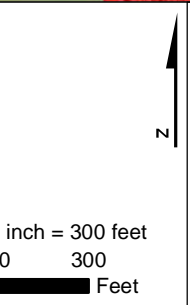
| | | | | | |
|--|--|--|--|----------------------------|--|
| <ul style="list-style-type: none"> Project Area Limit of Disturbance (LOD) 500-Ft Buffer Around Project Area Collection Lines Fencing Stormwater PV Panel Array Access Road Battery Pack Filtration Basins | <ul style="list-style-type: none"> Lawydown Yard Riprap Parking Area | <p>Plant Communities</p> <ul style="list-style-type: none"> Active Agriculture Disturbed/Developed Forestland Successional Shrubland Wetlands PEM Wetlands PFO Wetlands PUB | <p>1 inch = 300 feet</p> <p>0 150 300 Feet</p> | <p>MAP LOCATION</p> | <p>NEXTERA ENERGY RESOURCES</p> <p>PLANT COMMUNITIES WITHIN 500FT OF DISTURBANCE</p> <p>EXCELSIOR ENERGY CENTER, LLC</p> <p>TOWN OF BYRON, NY</p> <p>SHEET 13 OF 30</p> <p>FIGURE 22-2 SEPTEMBER 2020</p> <p>Map Produced by TRC</p> |
|--|--|--|--|----------------------------|--|



- Project Area
- Limit of Disturbance (LOD)
- 500-Ft Buffer Around Project Area
- Collection Lines
- HDD Lines
- Fencing
- Stormwater
- PV Panel Array
- Access Road
- Battery Pack

- Lawndown Yard
- Inverter
- HDD Bore Pit
- Riprap
- Parking Area

- Plant Communities**
- Active Agriculture
 - Disturbed/Developed
 - Forestland
 - Successional Old-Field
 - Successional Shrubland
 - Wetlands PEM



NEXTERA
ENERGY RESOURCES

**PLANT COMMUNITIES
WITHIN 500FT OF DISTURBANCE**
EXCELSIOR ENERGY CENTER, LLC
TOWN OF BYRON, NY
SHEET 14 OF 30

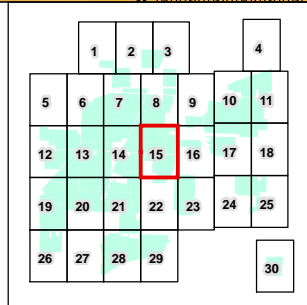
FIGURE 22-2 | SEPTEMBER 2020

Map Produced by TRC



| | | |
|-----------------------------------|---------------|--------------------------|
| Project Area | Lawndown Yard | Plant Communities |
| Limit of Disturbance (LOD) | Inverter | Active Agriculture |
| 500-Ft Buffer Around Project Area | HDD Bore Pit | Disturbed/Developed |
| Collection Lines | Riprap | Forestland |
| HDD Lines | Parking Area | Successional Old-Field |
| Fencing | | Successional Shrubland |
| Stormwater | | Wetlands PEM |
| PV Panel Array | | Wetlands PFO |
| Access Road | | Wetlands PUB |
| Battery Pack | | |

1 inch = 300 feet
0 150 300 Feet



NEXTERA
ENERGY
RESOURCES

**PLANT COMMUNITIES
WITHIN 500FT OF DISTURBANCE
EXCELSIOR ENERGY CENTER, LLC
TOWN OF BYRON, NY**

SHEET 15 OF 30

FIGURE 22-2 SEPTEMBER 2020

Map Produced by **TRC**



- Project Area
- Limit of Disturbance (LOD)
- 500-Ft Buffer Around Project Area
- Collection Lines
- HDD Lines
- Fencing
- Stormwater
- PV Panel Array
- Access Road
- Lawdown Yard
- HDD Bore Pit
- Riprap
- Parking Area

- Plant Communities**
- Active Agriculture
 - Disturbed/Developed
 - Forestland
 - Open Water
 - Successional Old-Field
 - Successional Shrubland
 - Wetlands PEM
 - Wetlands PFO
- 1 inch = 300 feet
 0 150 300 Feet

| | | | | | | |
|----|----|----|----|----|----|----|
| | 1 | 2 | 3 | 4 | | |
| 5 | 6 | 7 | 8 | 9 | 10 | 11 |
| 12 | 13 | 14 | 15 | 16 | 17 | 18 |
| 19 | 20 | 21 | 22 | 23 | 24 | 25 |
| 26 | 27 | 28 | 29 | | | 30 |



NEXTERA ENERGY RESOURCES

PLANT COMMUNITIES WITHIN 500FT OF DISTURBANCE
EXCELSIOR ENERGY CENTER, LLC
TOWN OF BYRON, NY
SHEET 16 OF 30

FIGURE 22-2 SEPTEMBER 2020

Map Produced by **TRC**

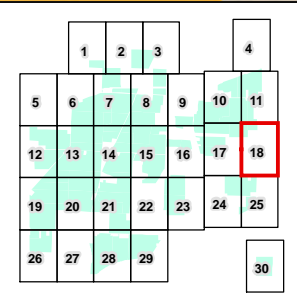


| | | | | | |
|--|--|---|--|----------------------------|--|
| <ul style="list-style-type: none"> Project Area Limit of Disturbance (LOD) 500-Ft Buffer Around Project Area Collection Lines HDD Lines Fencing Stormwater PV Panel Array Access Road Lawdown Yard | <ul style="list-style-type: none"> Inverter HDD Bore Pit Riprap Parking Area | <p>Plant Communities</p> <ul style="list-style-type: none"> Active Agriculture Disturbed/Developed Forestland Successional Old-Field Successional Shrubland Wetlands PEM Wetlands PFO Wetlands PSS | <p>1 inch = 300 feet</p> <p>0 150 300 Feet</p> | <p>MAP LOCATION</p> | <p>NEXTERA ENERGY RESOURCES</p> <p>PLANT COMMUNITIES WITHIN 500FT OF DISTURBANCE</p> <p>EXCELSIOR ENERGY CENTER, LLC</p> <p>TOWN OF BYRON, NY</p> <p>SHEET 17 OF 30</p> <p>FIGURE 22-2 SEPTEMBER 2020</p> <p>Map Produced by TRC</p> |
|--|--|---|--|----------------------------|--|



- Project Area
- Limit of Disturbance (LOD)
- 500-Ft Buffer Around Project Area
- Collection Lines
- Fencing
- Stormwater
- PV Panel Array
- Access Road
- Lawdown Yard
- Riprap
- Parking Area

- Plant Communities**
- Active Agriculture
 - Disturbed/Developed
 - Forestland
 - Open Water
 - Successional Old-Field
 - Successional Shrubland
 - Wetlands PUB
- 1 inch = 300 feet
- 0 150 300
Feet



**PLANT COMMUNITIES
WITHIN 500FT OF DISTURBANCE**
EXCELSIOR ENERGY CENTER, LLC
TOWN OF BYRON, NY
SHEET 18 OF 30

FIGURE 22-2 SEPTEMBER 2020

Map Produced by



- Project Area
- Limit of Disturbance (LOD)
- 500-Ft Buffer Around Project Area
- Collection Lines
- HDD Lines
- Fencing
- Stormwater
- PV Panel Array
- Access Road
- Battery Pack
- Lawndown Yard
- Inverter
- HDD Bore Pit
- Riprap
- Parking Area

- Plant Communities**
- Active Agriculture
 - Disturbed/Developed
 - Forestland
 - Open Water
 - Successional Shrubland
 - Wetlands PFO

1 inch = 300 feet

0 150 300

Feet

| | | | | | | |
|----|----|----|----|----|----|----|
| | 1 | 2 | 3 | 4 | | |
| 5 | 6 | 7 | 8 | 9 | 10 | 11 |
| 12 | 13 | 14 | 15 | 16 | 17 | 18 |
| 19 | 20 | 21 | 22 | 23 | 24 | 25 |
| 26 | 27 | 28 | 29 | | | |
| | | | | | | 30 |

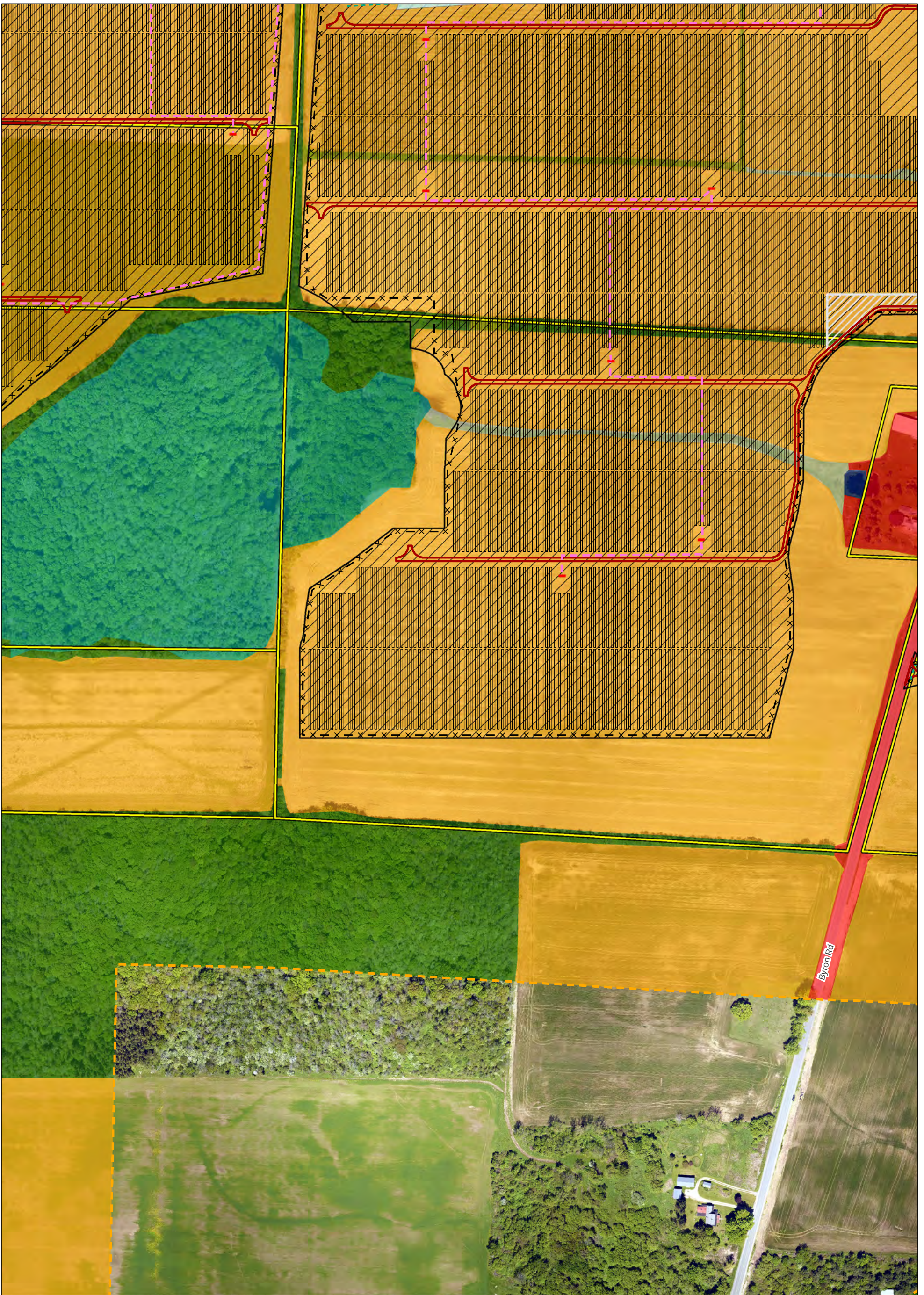


NEXTERA
ENERGY
RESOURCES

**PLANT COMMUNITIES
WITHIN 500FT OF DISTURBANCE
EXCELSIOR ENERGY CENTER, LLC
TOWN OF BYRON, NY
SHEET 19 OF 30**

FIGURE 22-2 SEPTEMBER 2020

Map Produced by TRC



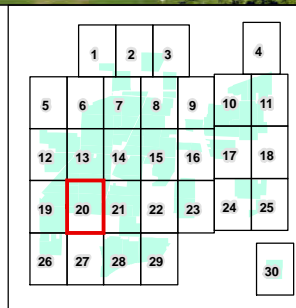
- Project Area
- Limit of Disturbance (LOD)
- 500-Ft Buffer Around Project Area
- Collection Lines
- Fencing
- Stormwater
- PV Panel Array
- Access Road
- Filtration Basins
- Lawndown Yard
- Inverter
- Riprap

Plant Communities

- Active Agriculture
- Disturbed/Developed
- Forestland
- Successional Old-Field
- Successional Shrubland
- Wetlands PFO
- Wetlands PUB

1 inch = 300 feet

0 150 300
Feet



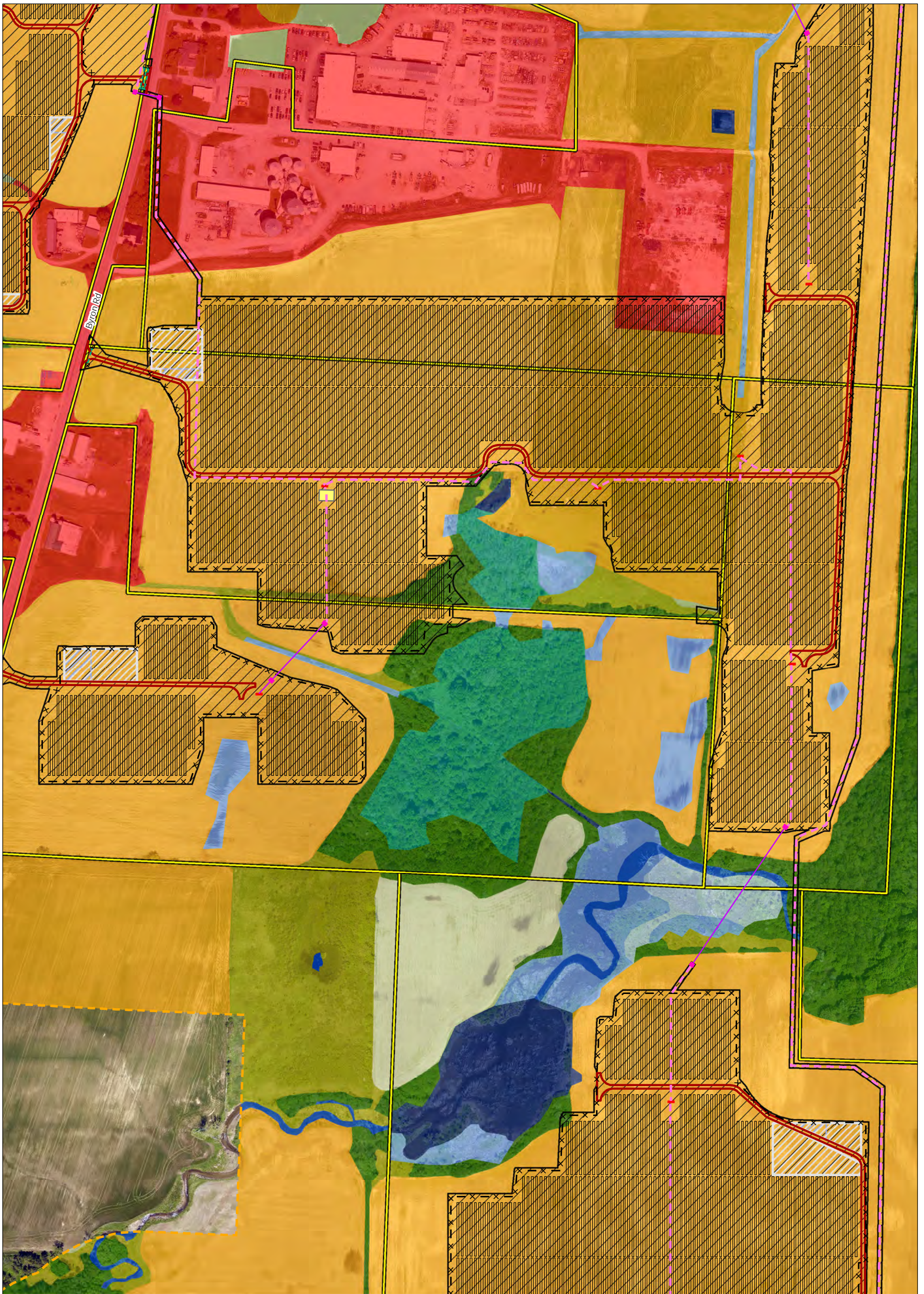
NEXTERA
ENERGY
RESOURCES

**PLANT COMMUNITIES
WITHIN 500FT OF DISTURBANCE
EXCELSIOR ENERGY CENTER, LLC
TOWN OF BYRON, NY**

SHEET 20 OF 30

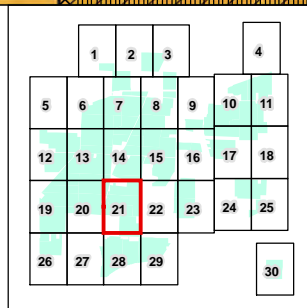
FIGURE 22-2 SEPTEMBER 2020

Map Produced by TRC



| | | | |
|-----------------------------------|--------------|--------------------------|--------------|
| Project Area | Lawdown Yard | Plant Communities | Wetlands PSS |
| Limit of Disturbance (LOD) | Inverter | | Wetlands PUB |
| 500-Ft Buffer Around Project Area | HDD Bore Pit | Active Agriculture | |
| Collection Lines | Riprap | Disturbed/Developed | |
| HDD Lines | Parking Area | Forestland | |
| Fencing | | Open Water | |
| Stormwater | | Successional Old-Field | |
| PV Panel Array | | Successional Shrubland | |
| Access Road | | Wetlands PEM | |
| Battery Pack | | Wetlands PFO | |

1 inch = 300 feet
0 150 300 Feet



NEXTERA
ENERGY RESOURCES

**PLANT COMMUNITIES
WITHIN 500FT OF DISTURBANCE
EXCELSIOR ENERGY CENTER, LLC
TOWN OF BYRON, NY**

SHEET 21 OF 30

FIGURE 22-2 SEPTEMBER 2020

Map Produced by **TRC**



- Project Area
- Limit of Disturbance (LOD)
- 500-Ft Buffer Around Project Area
- Collection Lines
- Fencing
- Stormwater
- PV Panel Array
- Access Road
- Riprap

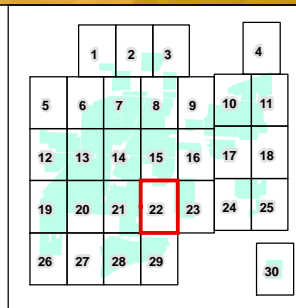
Plant Communities

- Active Agriculture
- Disturbed/Developed
- Forestland
- Open Water
- Successional Old-Field
- Successional Shrubland
- Wetlands PEM

1 inch = 300 feet

0 150 300

Feet



**PLANT COMMUNITIES
WITHIN 500FT OF DISTURBANCE**

EXCELSIOR ENERGY CENTER, LLC
TOWN OF BYRON, NY

SHEET 22 OF 30

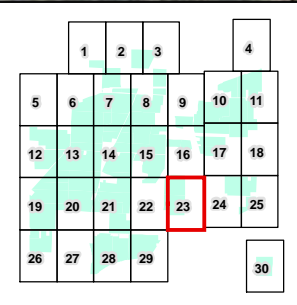
FIGURE 22-2 SEPTEMBER 2020

Map Produced by



| | | |
|-----------------------------------|---------------|--------------------------|
| Project Area | Lawndown Yard | Plant Communities |
| Limit of Disturbance (LOD) | Inverter | |
| 500-Ft Buffer Around Project Area | Parking Area | Active Agriculture |
| Collection Lines | | Disturbed/Developed |
| Fencing | | Forestland |
| Stormwater | | Open Water |
| PV Panel Array | | Successional Shrubland |
| Access Road | | Wetlands PFO |
| Battery Pack | | |
| Filtration Basins | | |

1 inch = 300 feet
0 150 300 Feet



NEXTERA
ENERGY
RESOURCES

**PLANT COMMUNITIES
WITHIN 500FT OF DISTURBANCE
EXCELSIOR ENERGY CENTER, LLC
TOWN OF BYRON, NY**

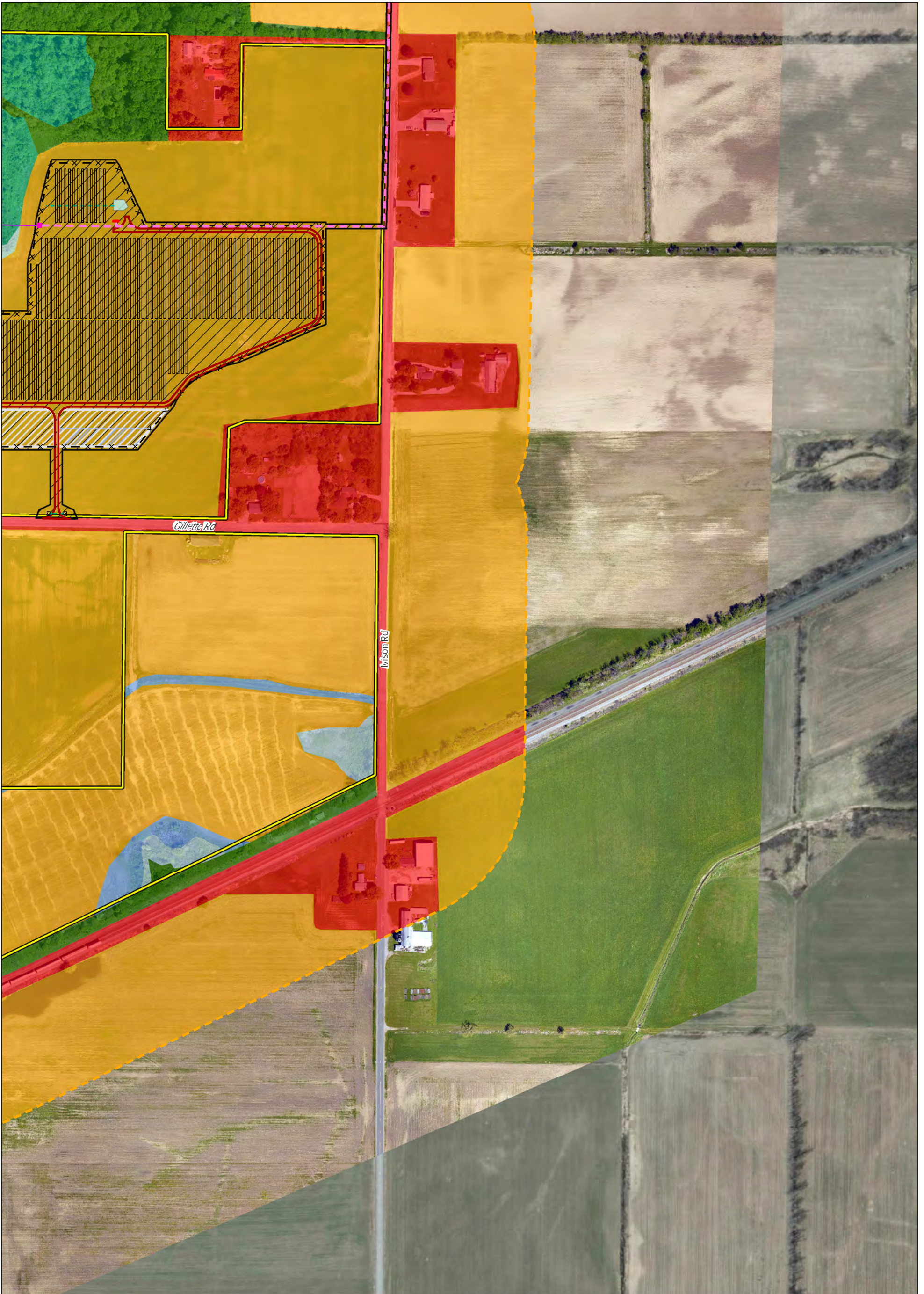
SHEET 23 OF 30

FIGURE 22-2 SEPTEMBER 2020

Map Produced by **TRC**



| | | | | | |
|--|---|--|--|----------------------------|---|
| <ul style="list-style-type: none"> Project Area Limit of Disturbance (LOD) 500-Ft Buffer Around Project Area Collection Lines HDD Lines Fencing PV Panel Array Access Road Laydown Yard Inverter | <ul style="list-style-type: none"> HDD Bore Pit | <p>Plant Communities</p> <ul style="list-style-type: none"> Active Agriculture Disturbed/Developed Forestland Successional Shrubland Wetlands PEM Wetlands PFO Wetlands PSS | <p>1 inch = 300 feet</p> <p>0 150 300 Feet</p> | <p>MAP LOCATION</p> | <p>NEXTERA ENERGY RESOURCES</p> <p>PLANT COMMUNITIES WITHIN 500FT OF DISTURBANCE EXCELSIOR ENERGY CENTER, LLC TOWN OF BYRON, NY SHEET 24 OF 30</p> <p>FIGURE 22-2 SEPTEMBER 2020</p> <p>Map Produced by TRC</p> |
|--|---|--|--|----------------------------|---|



| | | | | | | | | | | | | | | | | | | | | | | | | | | | | | | | | | | | | | | | | | | | | | | |
|---|--|---|--|--|----|----|---|---|---|---|---|---|---|---|----|----|----|----|----|----|----|----|----|----|----|----|----|----|----|----|----|----|----|----|--|--|--|--|--|--|--|--|--|----|----------------------------|---|
| <ul style="list-style-type: none"> Project Area Limit of Disturbance (LOD) 500-Ft Buffer Around Project Area Collection Lines HDD Lines Fencing Stormwater PV Panel Array Access Road Filtration Basins | <ul style="list-style-type: none"> Lawndown Yard Inverter HDD Bore Pit Riprap Parking Area | <p>Plant Communities</p> <ul style="list-style-type: none"> Active Agriculture Disturbed/Developed Forestland Wetlands PEM Wetlands PFO Wetlands PSS | <p>1 inch = 300 feet</p> <p>0 150 300 Feet</p> | <table border="1"> <tr><td></td><td>1</td><td>2</td><td>3</td><td>4</td></tr> <tr><td>5</td><td>6</td><td>7</td><td>8</td><td>9</td><td>10</td><td>11</td></tr> <tr><td>12</td><td>13</td><td>14</td><td>15</td><td>16</td><td>17</td><td>18</td></tr> <tr><td>19</td><td>20</td><td>21</td><td>22</td><td>23</td><td>24</td><td>25</td></tr> <tr><td>26</td><td>27</td><td>28</td><td>29</td><td></td><td></td><td></td></tr> <tr><td></td><td></td><td></td><td></td><td></td><td></td><td>30</td></tr> </table> | | 1 | 2 | 3 | 4 | 5 | 6 | 7 | 8 | 9 | 10 | 11 | 12 | 13 | 14 | 15 | 16 | 17 | 18 | 19 | 20 | 21 | 22 | 23 | 24 | 25 | 26 | 27 | 28 | 29 | | | | | | | | | | 30 | <p>MAP LOCATION</p> | <p>PLANT COMMUNITIES WITHIN 500FT OF DISTURBANCE EXCELSIOR ENERGY CENTER, LLC TOWN OF BYRON, NY SHEET 25 OF 30</p> <p>FIGURE 22-2 SEPTEMBER 2020</p> <p>Map Produced by </p> |
| | 1 | 2 | 3 | 4 | | | | | | | | | | | | | | | | | | | | | | | | | | | | | | | | | | | | | | | | | | |
| 5 | 6 | 7 | 8 | 9 | 10 | 11 | | | | | | | | | | | | | | | | | | | | | | | | | | | | | | | | | | | | | | | | |
| 12 | 13 | 14 | 15 | 16 | 17 | 18 | | | | | | | | | | | | | | | | | | | | | | | | | | | | | | | | | | | | | | | | |
| 19 | 20 | 21 | 22 | 23 | 24 | 25 | | | | | | | | | | | | | | | | | | | | | | | | | | | | | | | | | | | | | | | | |
| 26 | 27 | 28 | 29 | | | | | | | | | | | | | | | | | | | | | | | | | | | | | | | | | | | | | | | | | | | |
| | | | | | | 30 | | | | | | | | | | | | | | | | | | | | | | | | | | | | | | | | | | | | | | | | |



| | | | | | |
|---|--|---|--|----------------------------|--|
| <ul style="list-style-type: none"> Project Area Limit of Disturbance (LOD) 500-Ft Buffer Around Project Area Collection Lines Fencing Stormwater PV Panel Array Access Road Lawdown Yard Inverter | <ul style="list-style-type: none"> Riprap Parking Area | <p>Plant Communities</p> <ul style="list-style-type: none"> Active Agriculture Disturbed/Developed Forestland Successional Shrubland Wetlands PEM Wetlands PSS | <p>1 inch = 300 feet</p> <p>0 150 300 Feet</p> | <p>MAP LOCATION</p> | <p style="text-align: center;">PLANT COMMUNITIES WITHIN 500FT OF DISTURBANCE</p> <p style="text-align: center;">EXCELSIOR ENERGY CENTER, LLC TOWN OF BYRON, NY</p> <p style="text-align: center;">SHEET 26 OF 30</p> <p>FIGURE 22-2 SEPTEMBER 2020</p> <p style="text-align: right;">Map Produced by </p> |
|---|--|---|--|----------------------------|--|



- Project Area
- Limit of Disturbance (LOD)
- 500-Ft Buffer Around Project Area
- Fencing
- PV Panel Array
- Access Road

- Plant Communities**
- Active Agriculture
 - Disturbed/Developed
 - Forestland
 - Open Water
 - Successional Shrubland
 - Wetlands PEM
 - Wetlands PFO

1 inch = 300 feet
 0 150 300 Feet



| | | | | | |
|----|----|----|----|----|----|
| | 1 | 2 | 3 | 4 | |
| 5 | 6 | 7 | 8 | 9 | 10 |
| 11 | 12 | 13 | 14 | 15 | 16 |
| 17 | 18 | 19 | 20 | 21 | 22 |
| 23 | 24 | 25 | 26 | 27 | 28 |
| 29 | 30 | | | | |

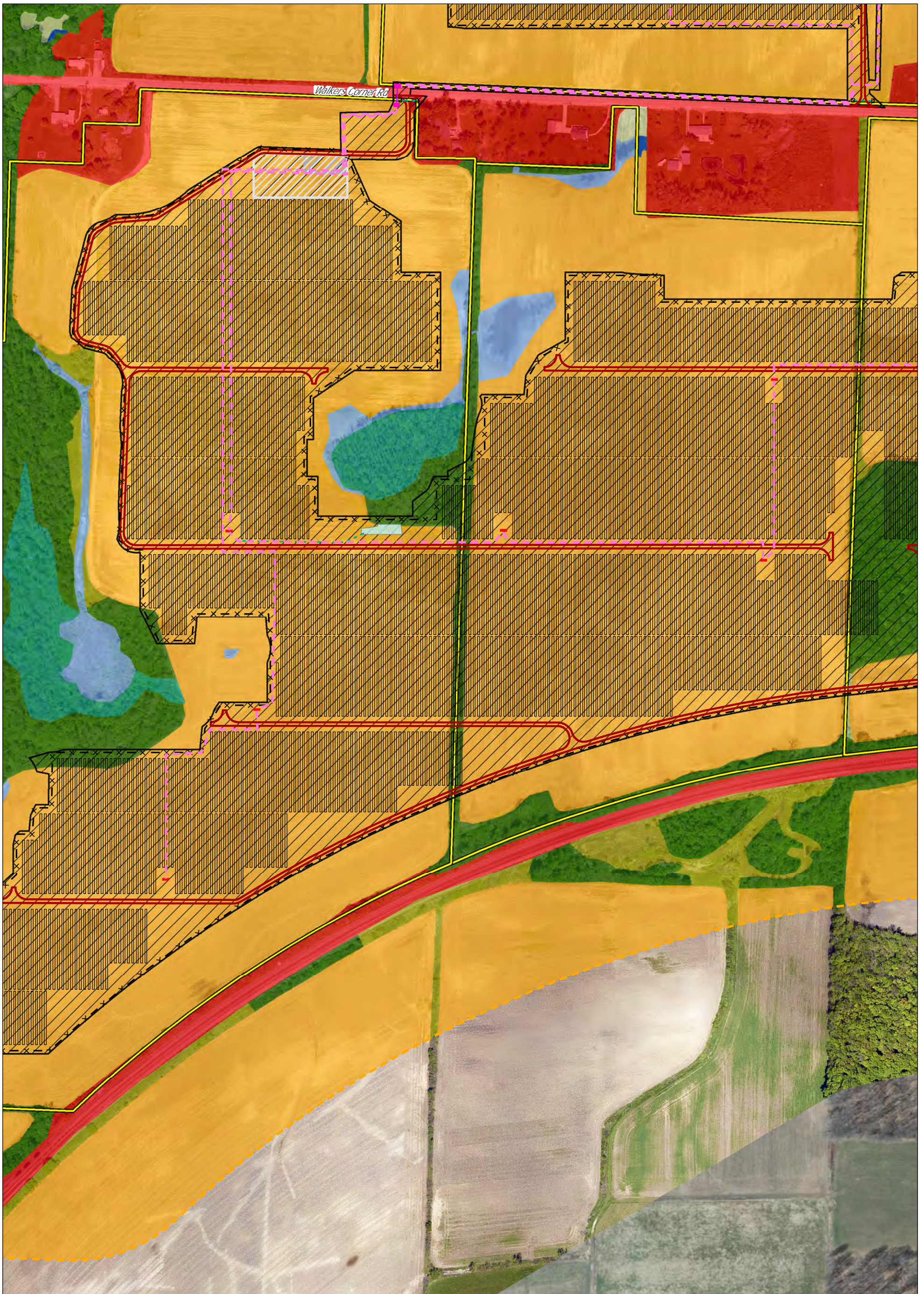
MAP LOCATION



**PLANT COMMUNITIES
 WITHIN 500FT OF DISTURBANCE**
EXCELSIOR ENERGY CENTER, LLC
 TOWN OF BYRON, NY
 SHEET 27 OF 30

FIGURE 22-2 SEPTEMBER 2020

Map Produced by TRC



| | | | | | |
|---|---|---|--|----------------------------|--|
| <ul style="list-style-type: none"> Project Area Limit of Disturbance (LOD) 500-Ft Buffer Around Project Area Collection Lines HDD Lines Fencing Stormwater PV Panel Array Access Road Filtration Basins | <ul style="list-style-type: none"> Lawdown Yard Inverter HDD Bore Pit Riprap Parking Area | <p>Plant Communities</p> <ul style="list-style-type: none"> Active Agriculture Disturbed/Developed Forestland Open Water Successional Old-Field Successional Shrubland Wetlands PEM Wetlands PFO | <p>1 inch = 300 feet</p> <p>0 150 300 Feet</p> | <p>MAP LOCATION</p> | <p>NEXTERA ENERGY RESOURCES</p> <p>PLANT COMMUNITIES WITHIN 500FT OF DISTURBANCE</p> <p>EXCELSIOR ENERGY CENTER, LLC TOWN OF BYRON, NY</p> <p>SHEET 28 OF 30</p> <p>FIGURE 22-2 SEPTEMBER 2020</p> <p>Map Produced by TRC</p> |
|---|---|---|--|----------------------------|--|



- Project Area
- Limit of Disturbance (LOD)
- 500-Ft Buffer Around Project Area
- Collection Lines
- Fencing
- Stormwater
- PV Panel Array
- Access Road
- Battery Pack
- Lawndown Yard
- Inverter
- Riprap
- Parking Area

- Plant Communities**
- Active Agriculture
 - Disturbed/Developed
 - Forestland
 - Successional Shrubland

1 inch = 300 feet
 0 150 300 Feet

| | | | | |
|----|----|----|----|----|
| | 1 | 2 | 3 | 4 |
| 5 | 6 | 7 | 8 | 9 |
| 10 | 11 | 12 | 13 | 14 |
| 15 | 16 | 17 | 18 | 19 |
| 20 | 21 | 22 | 23 | 24 |
| 25 | 26 | 27 | 28 | 29 |
| | | | | 30 |



NEXTERA
ENERGY
RESOURCES

**PLANT COMMUNITIES
WITHIN 500FT OF DISTURBANCE
EXCELSIOR ENERGY CENTER, LLC
TOWN OF BYRON, NY**

SHEET 29 OF 30

FIGURE 22-2 SEPTEMBER 2020

Map Produced by TRC



Project Area
 500-Ft Buffer Around Project Area

Plant Communities

- Active Agriculture
- Disturbed/Developed
- Forestland
- Open Water
- Successional Old-Field
- Successional Shrubland
- Wetlands PEM

1 inch = 300 feet
 0 150 300 Feet



| | | | | |
|----|----|----|----|----|
| | 1 | 2 | 3 | 4 |
| 5 | 6 | 7 | 8 | 9 |
| 10 | 11 | 12 | 13 | 14 |
| 15 | 16 | 17 | 18 | 19 |
| 20 | 21 | 22 | 23 | 24 |
| 25 | 26 | 27 | 28 | 29 |
| | | | | 30 |

MAP LOCATION



PLANT COMMUNITIES WITHIN 500FT OF DISTURBANCE
EXCELSIOR ENERGY CENTER, LLC
 TOWN OF BYRON, NY
 SHEET 30 OF 30

FIGURE 22-2 SEPTEMBER 2020

Map Produced by TRC