

LOCATION MAP: TIMBER MATTING

1. THIS MAP IS INTENDED TO SHOW THE PROPOSED TIMBER MATTING ACCESS LOCATIONS WITHIN THIS GENERAL AREA OF THE SITE.

GENERAL NOTES:

TEMPORARY ACOE WETLAND AREA IMPACTS:

- AFTER REMOVAL OF TEMPORARY TIMBER MATTING MINOR REGRADING WILL BE PERFORMED WITHIN 48 HOURS, AS REQUIRED, TO RESTORE CONTOURS TO PRE-CONSTRUCTION CONDITIONS.
- IMMEDIATELY UPON REMOVAL OF TEMPORARY TIMBER MATTING AND COMPLETION OF ANY REQUIRED REGRADING, WETLAND AREAS SHALL BE SEEDED WITH AN APPROPRIATE NATIVE WETLAND SPECIES MIX SUCH AS AN ERNST WETLAND MIX (OSL-FACW PERENNIAL WETLAND MIX, OSL WETLAND MIX, SPECIALIZED WETLAND MIX FOR SHADED OSL-FACW, OR EQUIVALENT) AT DENSITIES AS EXISTED PRIOR TO CONSTRUCTION. REGRADED AREAS OUTSIDE OF THE WETLAND LIMITS SHALL BE RESTORED BY SEEDED WITH THE GENERAL SEED MIX SPECIFIED, GENERAL NOTES AND TABLES, OF THE CIVIL CONSTRUCTION PLANS. (SEED MIX TABLE ALSO SHOWN BELOW).
- RESTORED AREAS SHALL BE MONITORED FOR A MINIMUM OF 5 YEARS OR UNTIL 80% COVER OF NATIVE SPECIES HAS BEEN REESTABLISHED OVER ALL PORTIONS OF THE REPLANTED AREA.

GENERAL NOTES:

- PROPOSED TIMBER MATTING LOCATIONS ARE BASED ON AERIAL IMAGERY. THE ACTUAL LOCATION OF TIMBER MATTING SHALL BE DETERMINED IN THE FIELD. CONTRACTOR AND ENVIRONMENTAL MONITOR (EM) TO FIELD VERIFY THAT THE LOCATION OF TIMBER MATTING WILL NOT REQUIRE TREE REMOVAL TO CROSS THE ACOE WETLAND.
- REFER TO CIVIL CONSTRUCTION PLAN SHEETS FOR WETLAND CROSSING REQUIREMENTS, TIMBER MATTING SECTIONS AND DETAILS, AND SPECIFICATIONS TO ACHIEVE TEMPORARY SITE ACCESS.
- TEMPORARY IMPACTS TO THE ACOE WETLAND SHALL BE LIMITED TO THE PLACEMENT AND REMOVAL OF THE 16-FOOT-WIDE TEMPORARY TIMBER MATTING AND POST-CONSTRUCTION WETLAND RESTORATION MEASURES.
  - TEMPORARY IMPACTS TO ACOE WETLAND IBP-01 NOT TO EXCEED 5,706 SQUARE FEET.
  - TEMPORARY IMPACTS TO ACOE WETLAND NOT TO EXCEED 3,767 SQUARE FEET.
- WETLAND CROSSING ALIGNMENT SHALL GENERALLY BE PERPENDICULAR TO THE WETLAND BOUNDARY AND BE CONSTRUCTED WITHIN THE APPROXIMATE LIMITS OF DISTURBANCE LINE SHOWN ON THE PLANS TO MINIMIZE TEMPORARY WETLAND IMPACTS TO THE MAXIMUM EXTENT PRACTICABLE.

GENERAL SEED MIX			
COMMON NAME	VARIETY	LBS. / ACRE	LBS./100 SQ. FT.
RED CLOVER <sup>1</sup> OR	ACCLAIM, RALLY RED HEAD II, RENEGADE	8 <sup>2</sup>	0.20
COMMON WHITE CLOVER <sup>1</sup>	COMMON	8	0.20
PLUS			
CREEPING RED FESCUE	COMMON	20	0.45
PLUS			
SMOOTH BROMEGRASS OR	COMMON	2	0.05
RYEGRASS (PERENNIAL)	PENNFINE/LINN	5	0.10

<sup>1</sup> ADD INOCULANT IMMEDIATELY PRIOR TO SEEDING

<sup>2</sup> MIX 4 LBS EACH OF EMPIRE AND PARDEE OR 4 LBS OF BIRDFOOT AND 4 LBS WHITE CLOVER PER ACRE. ALL SEEDING RATES ARE GIVEN FOR PURE LIVE SEED (PLS)

SEEDING RATE:

- 20 LB PER ACRE, OR 1/2 LB PER 1,000 SQ FT WITH A COVER CROP. FOR A COVER CROP USE ONE OF THE FOLLOWING:
  - GRAIN RYE (1 SEP TO 30 APR; 30 LBS/ACRE),
  - JAPANESE MILLET (1 MAY TO 31 AUG; 10 LBS/ACRE), OR
  - BARNYARD GRASS (1 MAY TO 31 AUG; 10 LBS/ACRE).

LEGEND

- PARCEL LINE
- LOT LINE
- RIGHT-OF-WAY LINES
- EX. STREAM
- EX. WATER EDGE
- EX TREELINE
- EX NYDEC CLAIMED WETLAND
- EX ACOE WETLAND
- EX OVERHEAD POWER
- EX FENCE
- EX GRAVEL ROAD
- EX PAVED ROAD
- EX CONTOURS
- EX STRUCTURE
- PROPOSED SOLAR ARRAY
- PROPOSED ELECTRICAL EQUIPMENT
- PROPOSED LAYDOWN YARD/STORAGE
- PROPOSED ACCESS ROAD
- PROPOSED SECURITY FENCE
- PROPOSED UNDERGROUND COLLECTOR
- PROPOSED LIMIT OF DISTURBANCE
- PROPOSED SILT FENCE
- PROPOSED STORMWATER CULVERT
- PROPOSED CONTOURS

LANDSCAPE LINE AND SHADING LEGEND

- LIMITS OF TEMPORARY IMPACTS
- GENERAL SEEDING NATURALIZED AREA
- GENERAL SEEDING ADJACENT AREA

ERNST "WETLAND SEED MIX" (ERNMX-122)  
"FACW WETLAND MEADOW MIX"

% / WEIGHT	BOTANICAL NAME	COMMON NAME
21.0%	CAREX VULPINOIDEA, PA ECOTYPE	FOX SEDGE
20.0%	ELYMUS VIRGINICUS, PA ECOTYPE	VIRGINIA WILDRYE
16.0%	CAREX LURIDA, PA ECOTYPE	LURID SEDGE
12.0%	CAREX LUPULINA, PA ECOTYPE	HOP SEDGE
12.0%	CAREX SCOPARIA, PA ECOTYPE	BLUNT BROOM SEDGE
3.0%	VERBENA HASTATA, PA ECOTYPE	BLUE VERVAIN
2.4%	ASCLEPIAS INCARNATA, PA ECOTYPE	SWAMP MILKWEED
2.0%	JUNCUS EFFUSUS	SOFT RUSH
2.0%	ZIZIA AUREA, PA ECOTYPE	GOLDEN ALEXANDERS
1.6%	ASTER NOVAE-ANGLIAE, PA ECOTYPE	NEW ENGLAND ASTER
1.3%	CAREX STIPATA, PA ECOTYPE	AWL SEDGE
1.0%	BIDENS CERNUA, PA ECOTYPE	NODDING BUR MARIGOLD
1.0%	JUNCUS TENUIS, PA ECOTYPE	PATH RUSH
0.8%	SOLIDAGO RUGOSA, PA ECOTYPE	WRINKLELEAF GOLDENROD
0.6%	VERBENA URTICIFOLIA, PA ECOTYPE	WHITE VERVAIN
0.5%	CAREX CRINITA, PA ECOTYPE	FRINGED SEDGE
0.5%	EUPATORIUM PERFOLIATUM, PA ECOTYPE	BONESET
0.5%	HELENIUM AUTUMNALE, PA ECOTYPE	COMMON SNEEZEWEED
0.5%	MIMULUS RINGENS, PA ECOTYPE	SQUARE STEMMED MONKEYFLOWER
0.3%	LOBELIA SIPHILITICA, PA ECOTYPE	GREAT BLUE LOBELIA
0.3%	SCIRPUS CYPERINUS, PA ECOTYPE	WOOLGRASS
0.2%	ALISMA SUBCORDATUM, PA ECOTYPE	MUD PLANTAIN
0.2%	ASTER PUNICEUS, PA ECOTYPE	PURPLESTEM ASTER
0.2%	ASTER UMBELLATUS, PA ECOTYPE	FLAT TOPPED WHITE ASTER
0.1%	PENTHORUM SEDOIDES, PA ECOTYPE	DITCH STONECROP

SEEDING RATE:

- 20 LB PER ACRE, OR 1/2 LB PER 1,000 SQ FT WITH A COVER CROP. FOR A COVER CROP USE ONE OF THE FOLLOWING:
  - GRAIN RYE (1 SEP TO 30 APR; 30 LBS/ACRE),
  - JAPANESE MILLET (1 MAY TO 31 AUG; 10 LBS/ACRE), OR
  - BARNYARD GRASS (1 MAY TO 31 AUG; 10 LBS/ACRE).

DELINEATED FEATURES WITH PROPOSED IMPACTS

ACOE WETLAND - IBP-01

EXCELSIOR ENERGY CENTER, LLC

TOWN OF BYRON

GENESSEE COUNTY, NY

REVIEW 1

REVIEW 2

DATE

SCALE

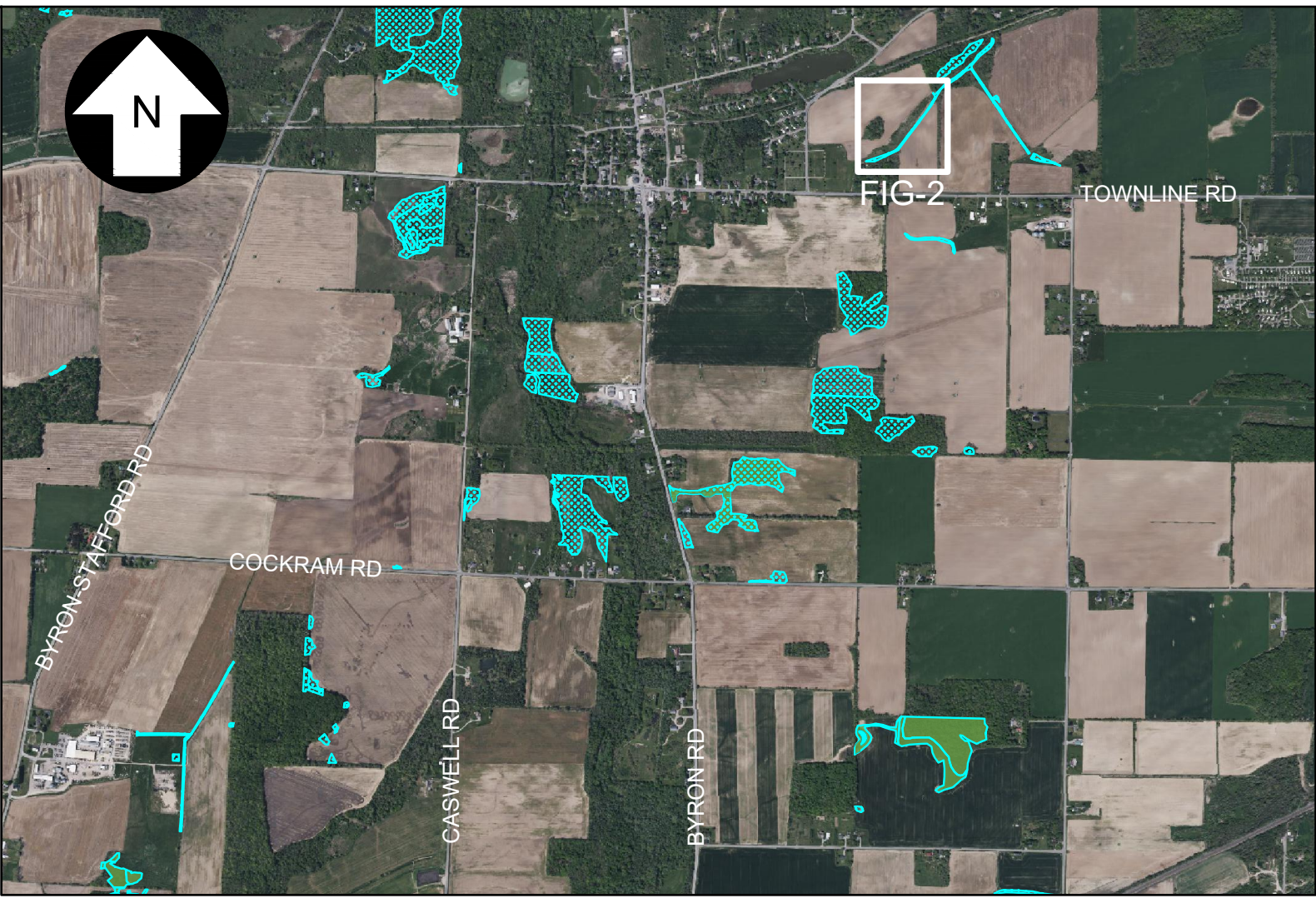
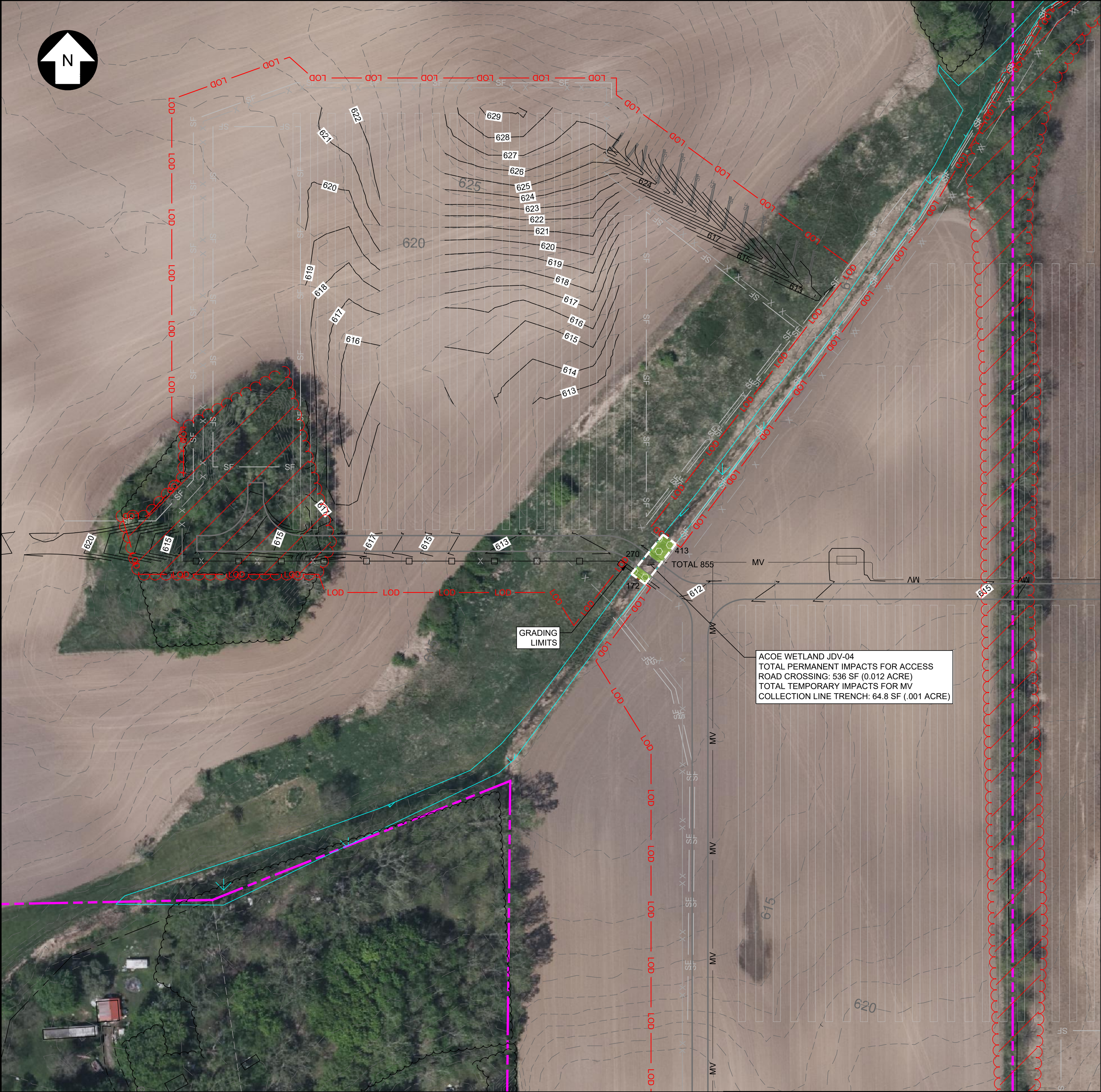


FIG-1

REV.

A





LOCATION MAP: ACOE ROAD CROSSING

1. THIS MAP IS INTENDED TO SHOW THE PERMANENT ROAD CROSSING LOCATIONS WITHIN THIS GENERAL AREA OF THE SITE.

SCALE: 1" = 2000'

GENERAL NOTES:

- TEMPORARY ACOE WETLAND AREA IMPACTS:
- AFTER REMOVAL OF TEMPORARY TIMBER MATTING MINOR REGRADING WILL BE PERFORMED WITHIN 48 HOURS, AS REQUIRED, TO RESTORE CONTOURS TO PRE-CONSTRUCTION CONDITIONS.
  - IMMEDIATELY UPON REMOVAL OF TEMPORARY TIMBER MATTING AND COMPLETION OF ANY REQUIRED REGRADING, WETLAND AREAS SHALL BE SEEDED WITH AN APPROPRIATE NATIVE WETLAND SPECIES MIX SUCH AS AN ERNST WETLAND MIX (OBL-FACW PERENNIAL WETLAND MIX, OBL WETLAND MIX, SPECIALIZED WETLAND MIX FOR SHADED OBL-FACW, OR EQUIVALENT) AT DENSITIES AS EXISTED PRIOR TO CONSTRUCTION. REGRADED AREAS OUTSIDE OF THE WETLAND LIMITS SHALL BE RESTORED BY SEEING WITH THE GENERAL SEED MIX SPECIFIED, GENERAL NOTES AND TABLES, OF THE CIVIL CONSTRUCTION PLANS. (SEED MIX TABLE ALSO SHOWN BELOW).
  - RESTORED AREAS SHALL BE MONITORED FOR A MINIMUM OF 5 YEARS OR UNTIL 80% COVER OF NATIVE SPECIES HAS BEEN REESTABLISHED OVER ALL PORTIONS OF THE REPLANTED AREA.

GENERAL NOTES:

- PROPOSED TIMBER MATTING LOCATIONS ARE BASED ON AERIAL IMAGERY. THE ACTUAL LOCATION OF TIMBER MATTING SHALL BE DETERMINED IN THE FIELD. CONTRACTOR AND ENVIRONMENTAL MONITOR (EM) TO FIELD VERIFY THAT THE LOCATION OF TIMBER MATTING WILL NOT REQUIRE TREE REMOVAL TO CROSS THE ACOE WETLAND.
- REFER TO CIVIL CONSTRUCTION PLAN SHEETS FOR WETLAND CROSSING REQUIREMENTS, TIMBER MATTING SECTIONS AND DETAILS, AND SPECIFICATIONS TO ACHIEVE TEMPORARY SITE ACCESS.
- TEMPORARY IMPACTS TO THE ACOE WETLAND SHALL BE LIMITED TO THE PLACEMENT AND REMOVAL OF THE 16-FOOT-WIDE TEMPORARY TIMBER MATTING AND POST-CONSTRUCTION WETLAND RESTORATION MEASURES.
- TEMPORARY IMPACTS TO THE ACOE WETLANDS NOT TO EXCEED 3,220 SQUARE FEET.
- TEMPORARY IMPACTS TO ACOE WETLAND NOT TO EXCEED 3,767 SQUARE FEET.
- WETLAND CROSSING ALIGNMENT SHALL GENERALLY BE PERPENDICULAR TO THE WETLAND BOUNDARY AND BE CONSTRUCTED WITHIN THE APPROXIMATE LIMITS OF DISTURBANCE LINE SHOWN ON THE PLANS TO MINIMIZE TEMPORARY WETLAND IMPACTS TO THE MAXIMUM EXTENT PRACTICABLE.

GENERAL SEED MIX			
COMMON NAME	VARIETY	LBS./ ACRE	LBS./100 SQ. FT.
RED CLOVER <sup>1</sup> OR	ACCLAIM, RALLY RED HEAD II, RENEGADE	8 <sup>2</sup>	0.20
COMMON WHITE CLOVER <sup>1</sup>	COMMON	8	0.20
PLUS			
CREEPING RED FESCUE	COMMON	20	0.45
PLUS			
SMOOTH BROMEGRASS OR	COMMON	2	0.05
RYEGRASS (PERENNIAL)	PENNFINE/LINN	5	0.10
<sup>1</sup> ADD INOCULANT IMMEDIATELY PRIOR TO SEEING			
<sup>2</sup> MIX 4 LBS EACH OF EMPIRE AND PARDEE OR 4 LBS OF BIRDFOOT AND 4 LBS WHITE CLOVER PER ACRE. ALL SEEING RATES ARE GIVEN FOR PURE LIVE SEED (PLS)			

SEEING RATE:

- 20 LB PER ACRE, OR 1/2 LB PER 1,000 SQ FT WITH A COVER CROP. FOR A COVER CROP USE ONE OF THE FOLLOWING:
  - GRAIN RYE (1 SEP TO 30 APR; 30 LBS/ACRE),
  - JAPANESE MILLET (1 MAY TO 31 AUG; 10 LBS/ACRE), OR
  - BARNYARD GRASS (1 MAY TO 31 AUG; 10 LBS/ACRE).

LEGEND	
	PARCEL LINE
	LOT LINE
	RIGHT-OF-WAY LINES
	EX. STREAM
	EX. WATER EDGE
	EX TREELINE
	EX NYDEC CLAIMED WETLAND
	EX ACOE WETLAND
	EX OVERHEAD POWER
	EX FENCE
	EX GRAVEL ROAD
	EX PAVED ROAD
	EX CONTOURS
	EX STRUCTURE
	PROPOSED SOLAR ARRAY
	PROPOSED ELECTRICAL EQUIPMENT
	PROPOSED LAYDOWN YARD/STORAGE
	PROPOSED ACCESS ROAD
	PROPOSED SECURITY FENCE
	PROPOSED UNDERGROUND COLLECTOR
	PROPOSED LIMIT OF DISTURBANCE
	PROPOSED SILT FENCE
	PROPOSED STORMWATER CULVERT
	PROPOSED CONTOURS



ERNST "WETLAND SEED MIX" (ERNMX-122) "FACW WETLAND MEADOW MIX"		
% / WEIGHT	BOTANICAL NAME	COMMON NAME
21.0%	CAREX VULPINOIDEA, PA ECOTYPE	FOX SEDGE
20.0%	ELYMUS VIRGINICUS, PA ECOTYPE	VIRGINIA WILDRYE
16.0%	CAREX LURIDA, PA ECOTYPE	LURID SEDGE
12.0%	CAREX LUPULINA, PA ECOTYPE	HOP SEDGE
12.0%	CAREX SCOPARIA, PA ECOTYPE	BLUNT BROOM SEDGE
3.0%	VERBENA HASTATA, PA ECOTYPE	BLUE VERVAIN
2.4%	ASCLEPIAS INCARNATA, PA ECOTYPE	SWAMP MILKWEED
2.0%	JUNCUS EFFUSUS	SOFT RUSH
2.0%	ZIZIA AUREA, PA ECOTYPE	GOLDEN ALEXANDERS
1.6%	ASTER NOVAE-ANGLIAE, PA ECOTYPE	NEW ENGLAND ASTER
1.3%	CAREX STIPATA, PA ECOTYPE	AWL SEDGE
1.0%	BIDENS CERNUA, PA ECOTYPE	NODDING BUR MARIGOLD
1.0%	JUNCUS TENUIS, PA ECOTYPE	PATH RUSH
0.8%	SOLIDAGO RUGOSA, PA ECOTYPE	WRINKLELEAF GOLDENROD
0.6%	VERBENA URTICIFOLIA, PA ECOTYPE	WHITE VERVAIN
0.5%	CAREX CRINITA, PA ECOTYPE	FRINGED SEDGE
0.5%	EUPATORIUM PERFOLIATUM, PA ECOTYPE	BONESET
0.5%	HELENIUM AUTUMNALE, PA ECOTYPE	COMMON SNEEZEWEED
0.5%	MIMULUS RINGENS, PA ECOTYPE	SQUARE STEMMED MONKEYFLOWER
0.3%	LOBELIA SIPHILITICA, PA ECOTYPE	GREAT BLUE LOBELIA
0.3%	SCIRPUS CYPERINUS, PA ECOTYPE	WOOLGRASS
0.2%	ALISMA SUBCORDATUM, PA ECOTYPE	MUD PLANTAIN
0.2%	ASTER PUNICEUS, PA ECOTYPE	PURPLESTEM ASTER
0.2%	ASTER UMBELLATUS, PA ECOTYPE	FLAT TOPPED WHITE ASTER
0.1%	PENTHORUM SEDOIDES, PA ECOTYPE	DITCH STONECROP

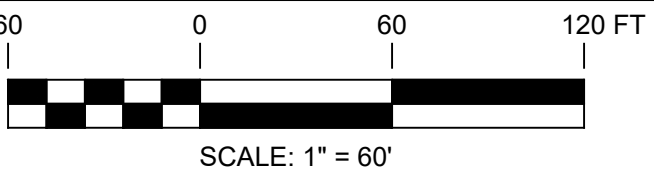
SEEING RATE:

- 20 LB PER ACRE, OR 1/2 LB PER 1,000 SQ FT WITH A COVER CROP. FOR A COVER CROP USE ONE OF THE FOLLOWING:
  - GRAIN RYE (1 SEP TO 30 APR; 30 LBS/ACRE),
  - JAPANESE MILLET (1 MAY TO 31 AUG; 10 LBS/ACRE), OR
  - BARNYARD GRASS (1 MAY TO 31 AUG; 10 LBS/ACRE).

ACOE WETLAND: ROAD CROSSING AT JDV-04

1. THIS MAP IS INTENDED TO SHOW THE PERMANENT IMPACTS TO ACOE WETLAND AT JDV-04 ROAD CROSSING.

UNDER NEW YORK STATE EDUCATION LAW ARTICLE 145 (ENGINEERING), SECTION 7209 (2), IT IS A VIOLATION OF THE LAW FOR ANY PERSON, UNLESS ACTING UNDER THE DIRECTION OF A LICENSED PROFESSIONAL ENGINEER, TO ALTER THIS DOCUMENT.



PRELIMINARY  
NOT FOR CONSTRUCTION

PREPARED FOR:



TRC 4900 RITTER ROAD  
MECHANICSBURG, PA

TRC PROJECT NO: 328808.0000

REV	DESCRIPTION	DATE	DES	CHK	APP
A	SUBMITTED FOR REVIEW	02/28/2025	GMT	MR	JD

GT DESIGNED
GT DRAWN
MR CHECKED
JD APPROVED

DELINEATED FEATURES WITH PROPOSED IMPACTS  
ACOE WETLAND - JDV-04  
EXCELSIOR ENERGY CENTER, LLC

TOWN OF BYRON

GENESSEE COUNTY, NY

REVIEW 1
REVIEW 2

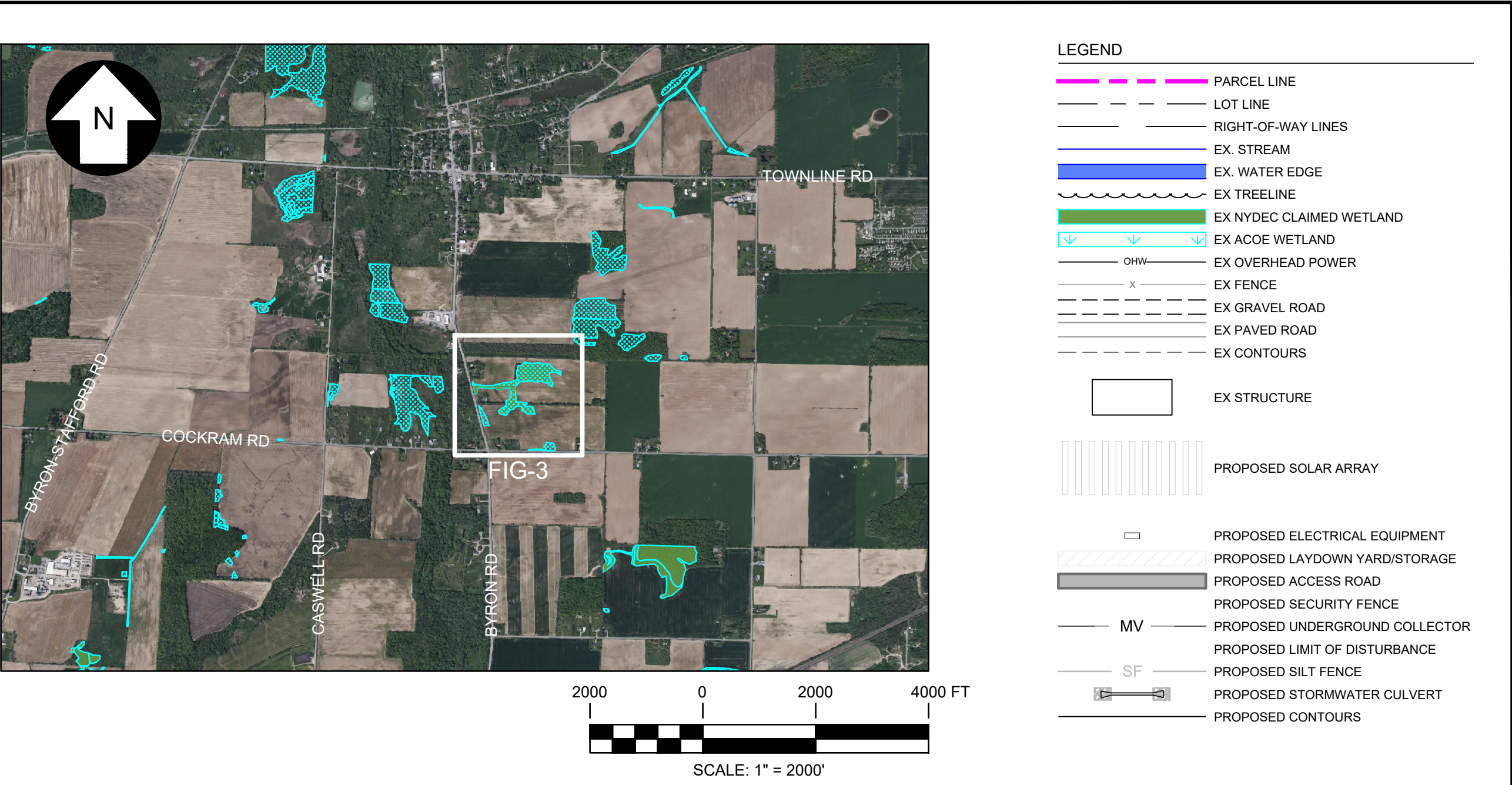
02/2025  
DATE  
AS NOTED  
SCALE



FIG-1

REV.  
A





- GENERAL NOTES:**
- PROPOSED TIMBER MATTING LOCATIONS ARE BASED ON AERIAL IMAGERY, THE ACTUAL LOCATION OF TIMBER MATTING SHALL BE DETERMINED IN THE FIELD. CONTRACTOR AND ENVIRONMENTAL MONITOR (EM) TO FIELD VERIFY THAT THE LOCATION OF TIMBER MATTING WILL NOT REQUIRE TREE REMOVAL TO CROSS THE ACOW WETLAND.
  - REFER TO CIVIL CONSTRUCTION PLAN SHEETS FOR WETLAND CROSSING REQUIREMENTS, TIMBER MATTING SECTIONS AND DETAILS, AND SPECIFICATIONS TO ACHIEVE TEMPORARY SITE ACCESS.
  - TEMPORARY IMPACTS TO THE W-JJB-10 WETLAND ADJACENT AREA SHALL BE LIMITED TO THE PLACEMENT AND REMOVAL OF A 16-FOOT-WIDE TEMPORARY TIMBER MATTING AND POST-CONSTRUCTION AGRICULTURAL RESTORATION MEASURES.
  - TEMPORARY IMPACTS TO THE DEC WETLAND W-JJB-10 NOT TO EXCEED 14,515 SQUARE FEET.



GENERAL SEED MIX			
COMMON NAME	VARIETY	LBS./ ACRE	LBS./100 SQ. FT.
RED CLOVER <sup>1</sup> OR	ACCLAIM, RALLY RED HEAD II, RENEGADE	8 <sup>2</sup>	0.20
COMMON WHITE CLOVER <sup>1</sup>	COMMON	8	0.20
PLUS			
CREEPING RED FESCUE	COMMON	20	0.45
PLUS			
SMOOTH BROMEGRASS OR	COMMON	2	0.05
RYEGRASS (PERENNIAL)	PENNFINE/LINN	5	0.10

- SEEDING RATE:**
- 20 LB PER ACRE, OR 1/2 LB PER 1,000 SQ. FT. WITH A COVER CROP.
  - FOR A COVER CROP USE ONE OF THE FOLLOWING:
    - GRAIN RYE (1 SEP TO 30 APR; 30 LBS/ACRE),
    - JAPANESE MILLET (1 MAY TO 31 AUG; 10 LBS/ACRE), OR
    - BARNYARD GRASS (1 MAY TO 31 AUG; 10 LBS/ACRE).

DEC WETLAND: TEMP ROAD CROSSING AND BORE PIT AT W-JJB-10

1. THIS MAP IS INTENDED TO SHOW THE TEMPORARY IMPACTS TO DEC WETLAND AT W-JJB-10 TEMP ROAD CROSSING AND BORE PIT LOCATION.

UNDER NEW YORK STATE EDUCATION LAW ARTICLE 145 (ENGINEERING), SECTION 7209 (2), IT IS A VIOLATION OF THE LAW FOR ANY PERSON, UNLESS ACTING UNDER THE DIRECTION OF A LICENSED PROFESSIONAL ENGINEER, TO ALTER THIS DOCUMENT.

150 0 150 300 FT

SCALE: 1" = 150'

**PRELIMINARY**  
NOT FOR CONSTRUCTION

PREPARED FOR:

**Nextera ENERGY**

4900 RITTER ROAD  
MECHANICSBURG, PA

TRC PROJECT NO: 328808.0000

REV	DESCRIPTION	DATE	DES	CHK	APP
A	SUBMITTED FOR REVIEW	02/28/2025	GMT	MR	JD

GT DESIGNED	DELINEATED FEATURES WITH PROPOSED TEMPORARY IMPACTS TO THE NYSDEC-CLAIMED WETLAND W-JJB-10 ADJACENT AREA EXCELSIOR ENERGY CENTER, LLC	TOWN OF BYRON	GENESSEE COUNTY, NY	
GT DRAWN				
MR CHECKED				
JD APPROVED				
REVIEW 1	02/2025 DATE	<b>TRC</b>	FIG-3	REV. A
REVIEW 2	AS NOTED SCALE			